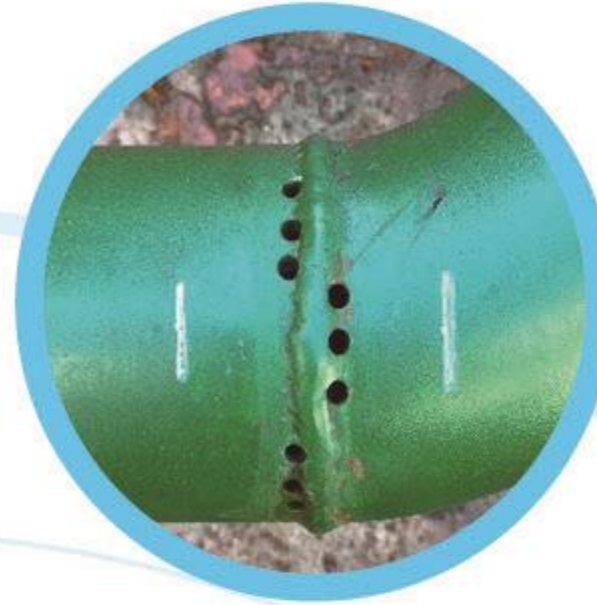


# PIPE COUPLING

## ELBOW (PIPE) REPAIR CLAMP JOINTS



Leakage

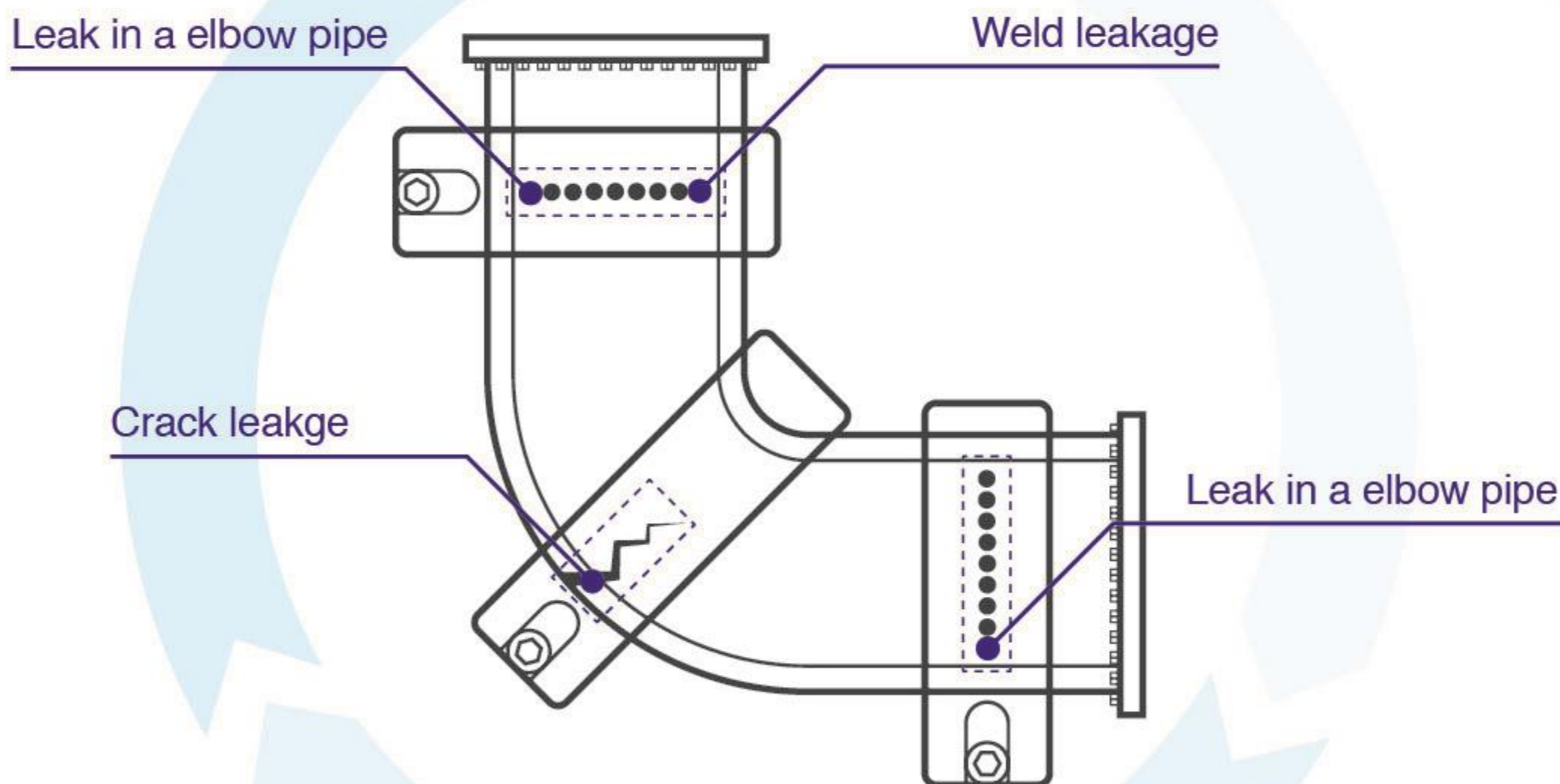


Easy And Fast

Install

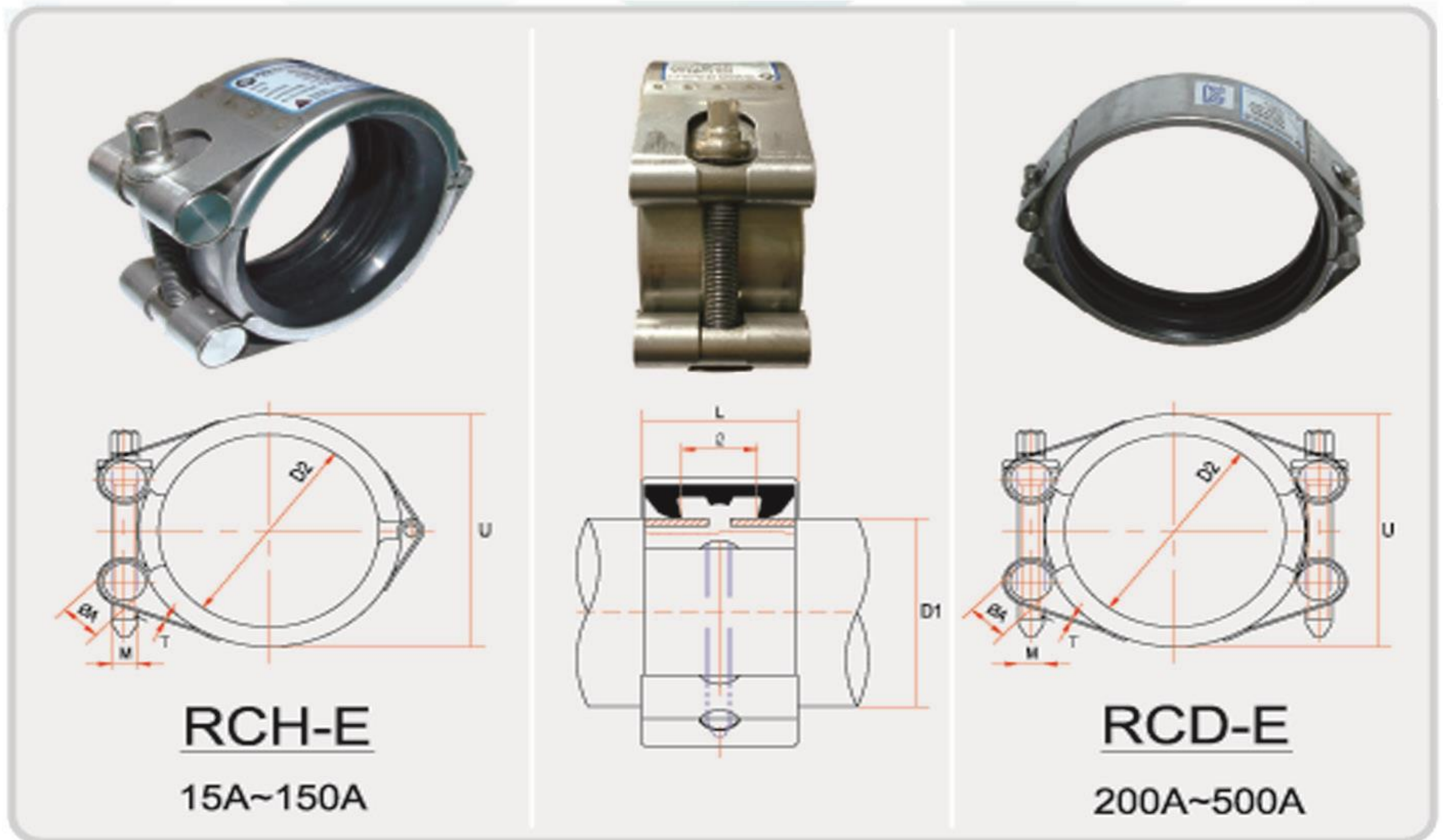


Complete Repair



Pressure Test for Elbow Repair

SIZE (Inch)	Bolt Torque (N.m)	Length (mm)	Working Pressure (Kgf/cm <sup>2</sup> )	Max Pressure (Kgf/cm <sup>2</sup> )	Busting Pressure (Kgf/cm <sup>2</sup> )
15A (1/2")	3~5	26.3	18.0	65.0	70.0
50A (2")	12~15	41.8	16.0	55.0	60.0
100A (4")	20~25	52.4	14.0	45.0	50.0
150A (6")	30~32	52.4	12.0	45.0	50.0
300A (12")	45~50	58.5	10.0	35.0	40.0
500A (20")	65~70	58.5	7.0	18.0	20.0



### Elbow Repair Clamp Coupling (Dimensions)

SIZE N.D (Inch)	KS/JIS	O/D ASTM	Length (mm)	Thickness (mm)	W/Pressure (Kgf/cm <sup>2</sup> )	Weights (Kg)	Bolt Torque N.m(Kgf.cm)
15A (1/2")	21.7	21.3	26.3	0.8	18	0.092	3~5(30~50)
20A (3/4")	27.2	26.7	26.3	0.8	18	0.098	3~5(30~50)
25A (1")	34.0	33.4	26.3	0.8	18	0.100	3~5(30~50)
32A (1-1/4")	42.7	42.2	26.3	0.8	18	0.11	3~5(30~50)
40A (1-1/2")	48.6	48.3	26.3	0.8	18	0.12	3~5(30~50)
50A (2")	60.5	60.3	41.8	0.8	16	0.30	12~15(120~150)
65A (2-1/2")	76.3	73.0	41.8	0.8	16	0.35	12~15(120~150)
80A (3")	89.1	88.9	52.4	1.0	14	0.60	20~25(200~250)
100A (4")	114.3	114.3	52.4	1.0	14	0.67	20~25(200~250)
125A (5")	139.8	141.3	52.4	1.0	12	0.85	30~32(300~320)
150A (6")	165.2	168.3	52.4	1.0	12	0.88	30~32(300~320)
200A (8")	216.3	219.1	57.5	1.2	10	1.65	32~35(320~350)
250A (10")	267.4	273.1	57.5	1.2	10	1.84	32~35(320~350)
300A (12")	318.5	323.9	58.5	1.5	10	2.67	45~50(450~500)
350A (14")	355.6	355.6	58.5	1.5	10	2.81	45~50(450~500)
400A (16")	406.4	406.4	58.5	1.5	10	3.02	55~60(550~600)
450A (18")	457.2	457.2	58.5	1.5	7	3.25	55~60(550~600)
500A (20")	508.0	508.0	58.5	1.5	7	3.53	65~70(650~700)