

THE LEADER OF  
UNDERWATER TECHNOLOGY



SUB BOTTOM  
PROFILER

Z-TAM



# Z-TAM INTRODUCTION

## Intro

The Z-Tam Sub Bottom Profiling System produces high resolution images of the sub bottom stratigraphy of oceans, lakes, and rivers, etc. The Z-Tam system uses a wide-band frequency, which utilizes Chirp technology.

As an option, the Z-Tam system provides a low drag, operating at different frequencies and usable at different depths. The sub bottom characteristics, the resolution and penetration requirements all affect the choice of towfish.

The Z-Tam system comes with a choice of three towfish : Z-Tam1, Z-Tam2, Z-Tam3.

These towfish operate at different frequency ranges or number of transducers.

In addition to a towfish, the Z-Tam systems provide a topside processor, which runs Z-tam Pro software for the display of the sonar data and sub bottom acquisitions, and a customer-specified length of tow cable.

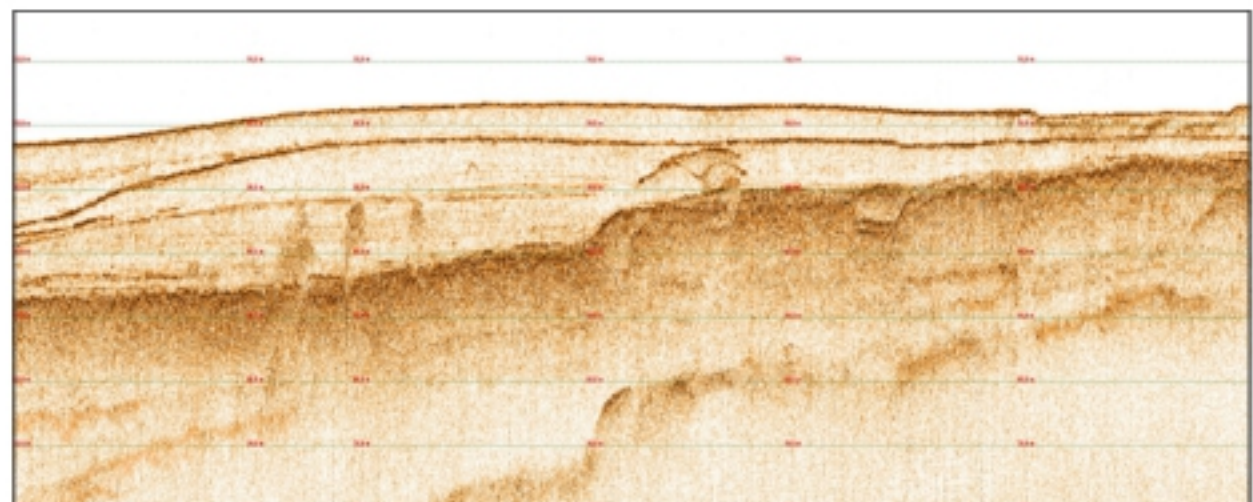
## Key Features

- Choice of three towfish depending on the application
- High resolution imagery
- Greater penetration
- Shallow water surveys
- Easy to setup and operate

## Applications

- Geological surveys
- Geohazard surveys
- Sediment classification
- Pipeline and cable location
- Buried object location

## Scan Image



# TECHNICAL SPECIFICATION

## Z-Tam Towfish



Frequency	10~20kHz		2~7kHz
Number of Transducers	1	1	4
Pulse Type	Chirp, CW		
Pulse Length	2ms ~ 200ms		
Vertical Resolution	≥7.5cm	≥15cm	
Beamwidth(@-3dB)	17°	90°	35°
Penetration	2m (sand)	5m (sand)	10m (sand)
	40m (mud)	80m (mud)	120m (mud)
Input Power Max	4,000W	750W	3,000W
Operating Depth	Max 400m		
Tow Speed	Max 8knots		
Towing Cable	Kevlar Coaxial 14.0mm, Reel with Slip Ring		
Option	Armored Coaxial Cable		
Size	Length	1,100mm	1,000mm
	Diameter	610mm	600mm
Weight	90kg		35kg
			90kg

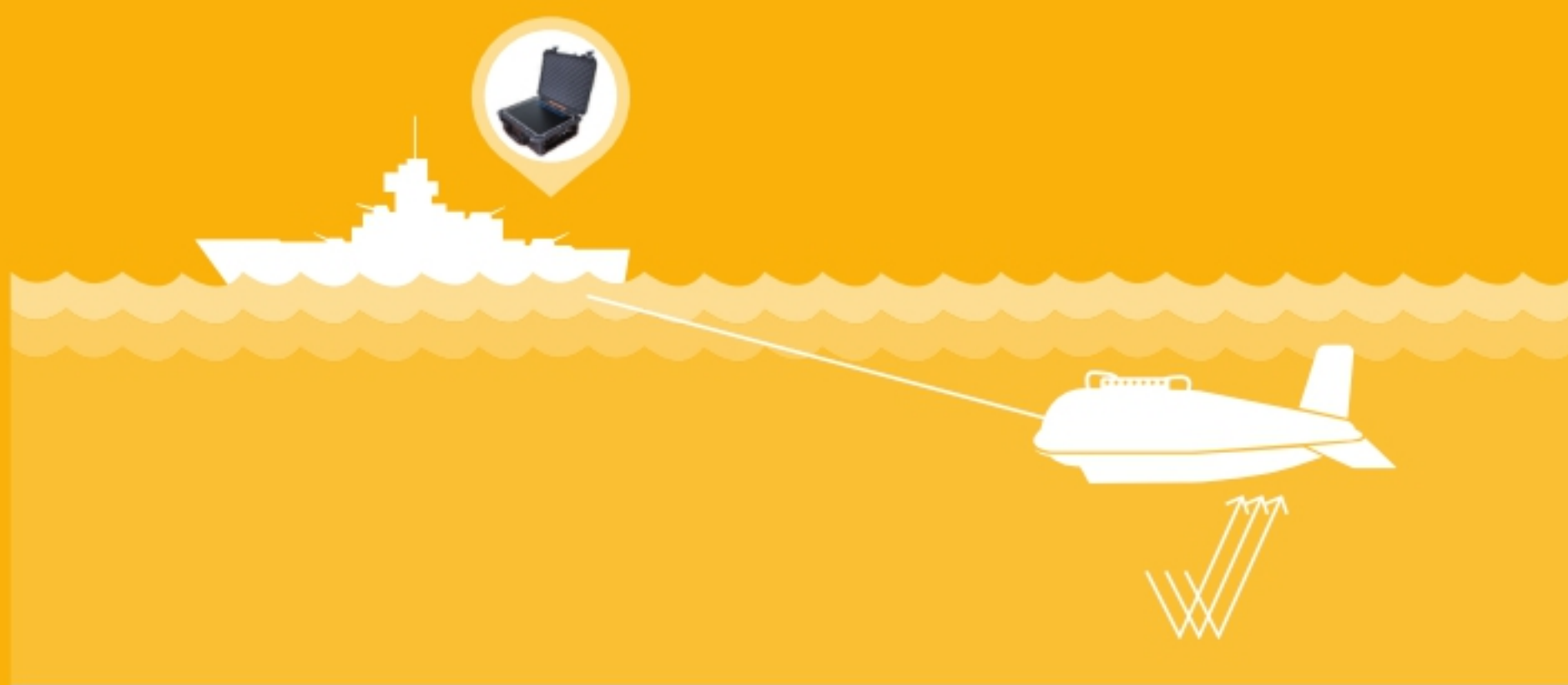
## Transceiver Control Unit (TCU)



Size	480mm(W)x460mm(D)x170mm(H)
Weight	<16kg
Input Power	110~240 VAC, 50/60Hz
Outputs	Ethernet LAN, RS232
Options	19" Rack-mount design, Portable case design

## Operating Unit

Operating System	Windows XP / 7 / 8
Processor	≥Intel 2GHz Dual-Core
Memory	≥2GB RAM
Data Format	SEG-Y
Data Storage	HDD 500GB, recommended CD/DVD-RW
Hardware	Industrial PC
Software	Z-tam Pro
Options	Optional waterproof laptop, 19" Rack-mount



## **SonarTech Co., Ltd.**

238-36, Daeyeon-Dong, Nam-Gu, Busan, Korea

Tel 051-403-7797 | Fax 051-403-7706 | [webmaster@sonartech.com](mailto:webmaster@sonartech.com)

[www.sonartech.com](http://www.sonartech.com) | [www.sonarbeam.co.kr](http://www.sonarbeam.co.kr)