

OptoLink API Fibre Optic Connector



Description

The API connector series is specifically designed with test ports required by the American Petroleum Institute (API) 16D.

Two test ports on the FCR connector permit integrity checks on the dual O-ring between the FCR and the installation flange. They are also used to check the dual O-ring sealing on the connector pair when mated. Test ports are standard SAE 3/16".

OptoLink connectors are designed to work with single and multimode optical fibres. They are rated to 6000 metres and the shells manufactured from SS316 stainless steel with an electro polished surface.

Features and Benefits

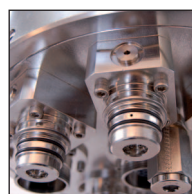
- Double test ports as required by API 16D
- Standard depth rating 6,000 metres
- One to four fibre passes
- Low attenuation
- Low back reflection
- Unlimited number of matings
- Excellent performance even when mated in harsh marine environments

Applications

- Fibre optic video and data multiplexers
- Fibre optic riser monitoring systems
- Drilling control systems

Specifications

- Optical passes: one to four fibre 9/125 μm , 50/125 μm or 62,5/125 μm
- Attenuation: 1.0-1.5 (typical) - 2.5 dB (max)
- Back reflection: 30 dB (typical) - 28 dB (max)
- Operation depth: 6,000 metres



Technical Specifications

Specifications

Material specifications

Metal shell housing:	Stainless steel SS 316
Fibre optic insert:	Arcap
Dummy connector:	Black POM
O-Ring materials:	FPM 75
Full pressure dummy:	Stainless steel SS 316

Optical specifications (single mode)

Wavelength:	1.310 and 1.550 nm
Attenuation:	Max 2.5 dB Typical 1.0-1.5 dB (mated pair)
Fibre types:	9/125 µm
Back reflection:	30 dB (typical) -28 dB (max)
Optical passes:	1 to 4 passes

Optical specifications (multi mode)

Wavelength:	850 and 1,300 nm
Attenuation:	Max 2.5 dB Typical 1.5-2.0 dB (mated pair)
Fibre types:	50/125 or 62.5/125 µm
Optical passes:	1 to 4 passes

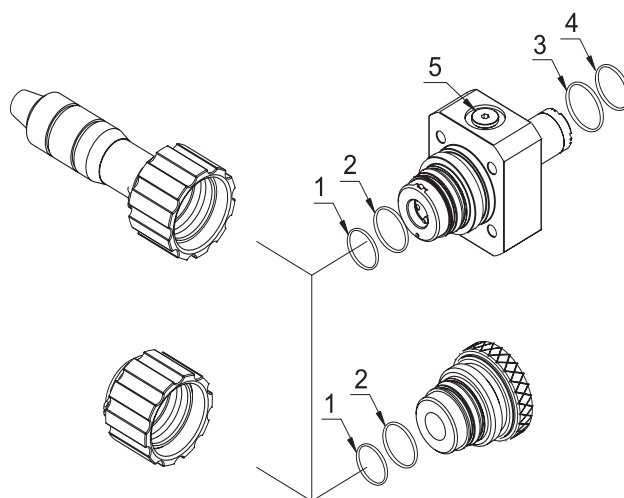
Connector specifications

Depth rating:	Mated: 6,000 m
Temperature rating:	Storage: -50° C/+85° C Operational: -20° C/+50° C
Mating cycles:	Optical: >1000
Optical passes:	Single, multi mode or combined

Certifications:

Documentation:	In accordance with DNV ISO 9001:2008
----------------	---

Specification subject to change without notice



O-Rings:

- 1: 26.10 x 1.78
- 2: 28.00 x 1.70
- 3: 31.47 x 1.78
- 4: 25.12 x 1.78

Blind Plug:

5: 3/16" SAE Port (Thread 3/8" - 24 UNF)

