

# EWV

## Vertical, Single Stage, Volute Casing, Centrifugal Sump Pump

입축, 단단, 볼류트 케이싱 원심 썸프 펌프

10Bar / PN 10Bar

### 용도 및 적용분야 / Usages and applications

청수, 해수, 화학액 등에 사용된다. 펄프 제지공업, 발전소, 하수처리 플랜트, 화학 및 석유화학 플랜트, 식품공업, 제철공업 등의 썸프, 보조수 등의 펌핑에 사용된다.

For clean water, sea water, chemicals, etc. Services such as sump, auxiliary water etc. In the pulp and paper industry, power plants, sewage treatment plants, chemical and petrochemical plants, foodstuffs industries, steel industries, steel industry etc.



### 설계 및 구조적 특징 / Design and operation features

01. 수직형이므로 설치 면적이 적고 자동운전에 적합하다.
  02. 오일 씬과 가스켓으로 밀봉한 후 보호관에 의해 축이 보호된다.
  03. 견고하게 지지된 상부 베어링과 메탈 베어링에 의하여 진동이 적은 안정운동이 가능하다.
  04. 특수 액체용으로 접액부 특수재질(스텐 등)에 사용가능.
  05. 필요시 베이스 플레이트 기밀( ) 구조도 가능하다.
  06. 모든 펌프는 구동에서 보아서 우회전이다.
- ※ 상기 사양범위를 초과하는 대형 펌프도 제작합니다.

01. Vertical construction, reduced installation space and suitable for automatic operation.
  02. Shaft is protected by the shaft protection tube with sealing oil seal and gasket.
  03. Smooth and stable operation is guaranteed by the bearings securely supported.
  04. Special materials(stainless steel etc) available.
  05. Gas-tight base plate available if requested.
  06. All the pumps are clockwise rotation when viewed from the driver end.
- \* The out of the above range can be supplied according to customer's order placement.

### 흡토출 브랜치의 위치 • 플랜지 / Branch positions • Flange

01. 흡입브랜치 : 축하단부
02. 토출 브랜치 : 베이스 플레이트상 수직방향
03. 플랜지 : KS 또는 JIS 10kg/cm<sup>2</sup> 급 평면플랜지(FF)이다.

01. Suction branch : Bottom end.
02. Delivery branch : Upright direction on the base plate.
03. Flanges : KS or JIS 10kg/cm<sup>2</sup> ratings, flat faced(FF)

### 베어링과 그 윤활 / Bearing and Lubrication

01. 상부베어링 : 7300, 6300 씨리즈, 그리스 윤활
02. 하부베어링 : 메탈베어링, 그리스 윤활

01. Upper bearing : Grease lubrication ball bearings series 7300 or 6300
02. Sleeve bearing : Grease lubricated metal bearing

### 축카플링과 안전카버 / Shaft coupling and coupling guard

플렉시블 카플링 사용, 안전카버는 전동기 프레임으로써 대응한다.

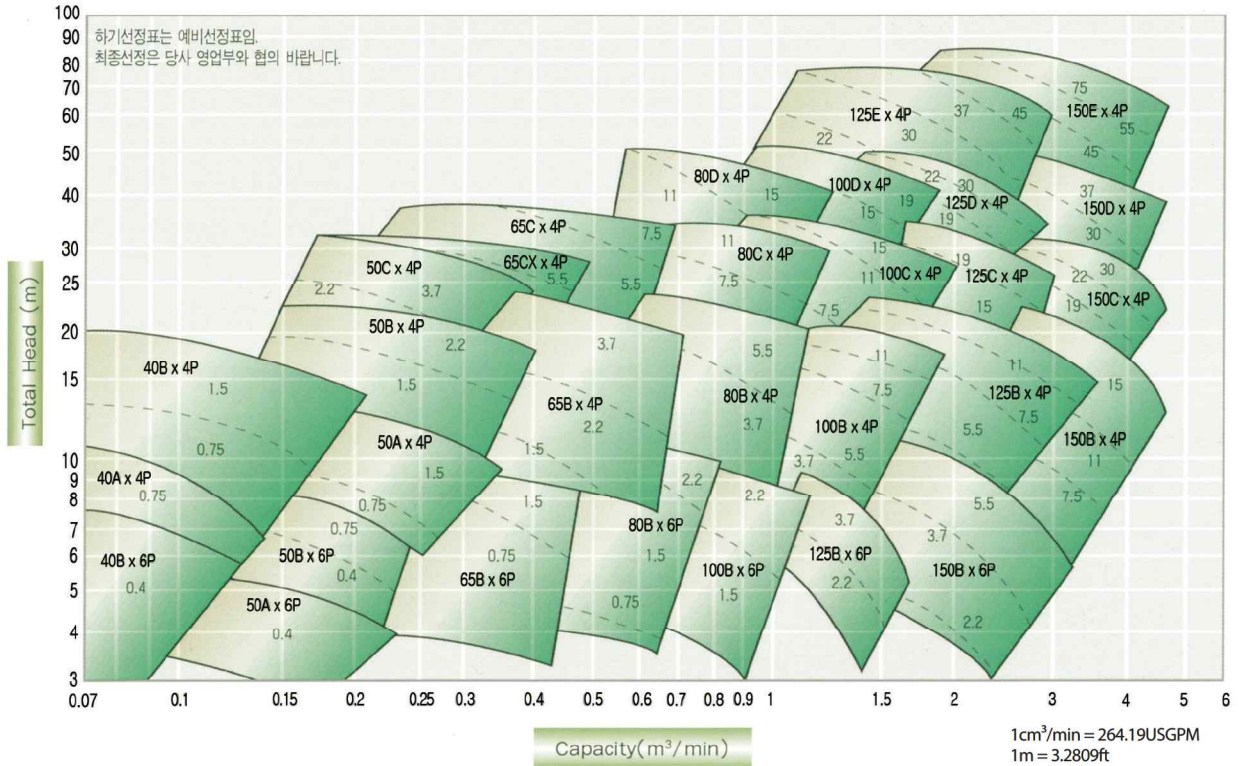
Flexible coupling. Motor frame for coupling guard.

### 형식 표시 방법 / Type nomenclature

- ▶ 씨리즈(Series) \_\_\_\_\_
- ▶ 사이즈/흡입 구경(Size/Nominal dia. of suction nozzle) \_\_\_\_\_
- ▶ 양정 등급(Head ratings) : A,B,C..... \_\_\_\_\_

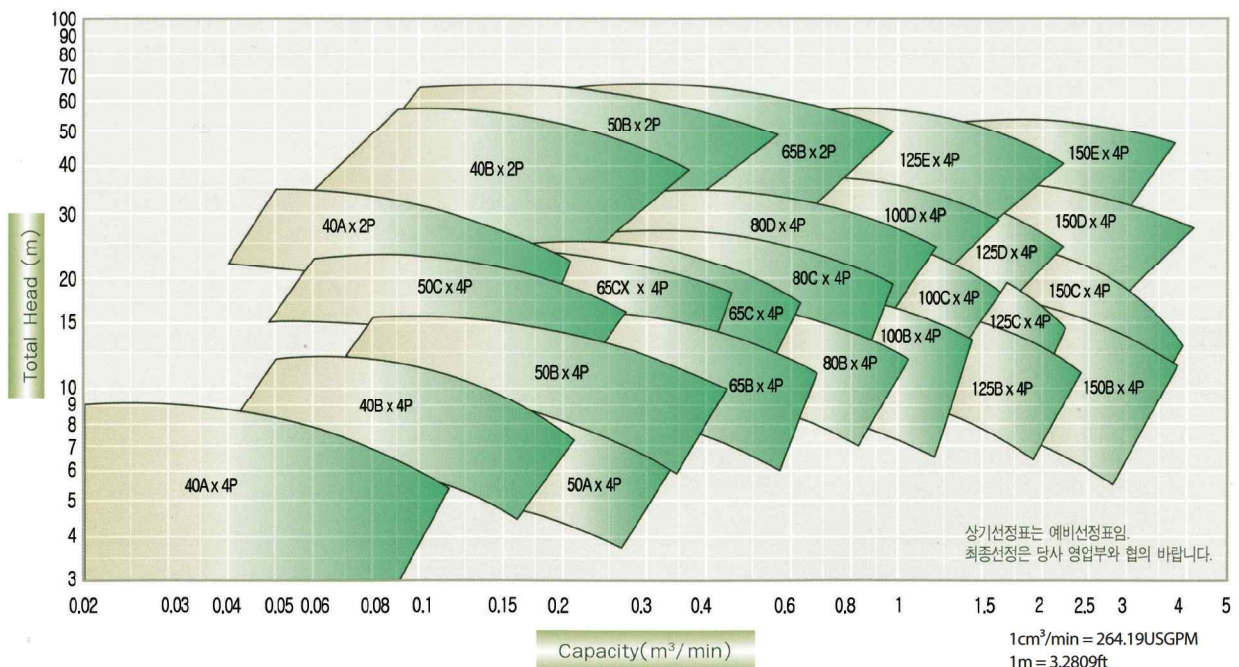
## EWV-40B

## 선정표(60HZ에서) / Performance selection chart(60Hz)



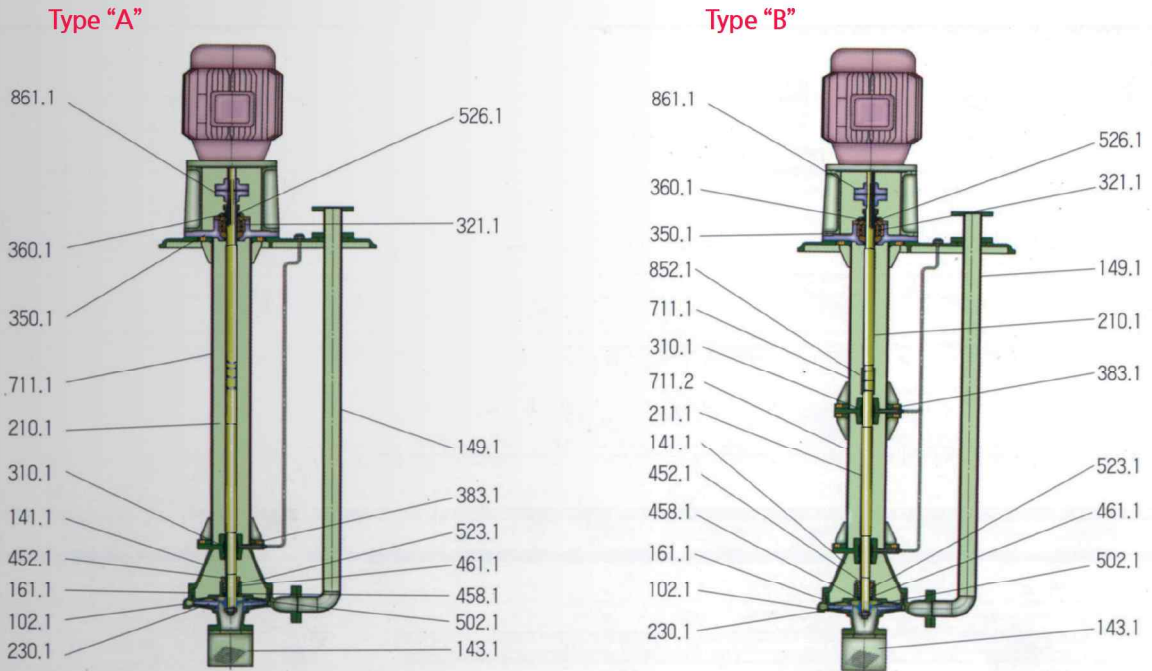
\* The out of the above range can be supplied according to customer's order placement.

## 선정표(50HZ에서) / Performance selection chart(50Hz)



\* The out of the above range can be supplied according to customer's order placement.

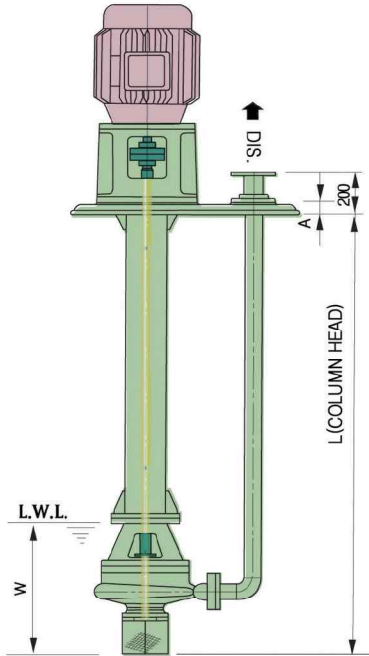
조립 단면도 / Sectional drawing



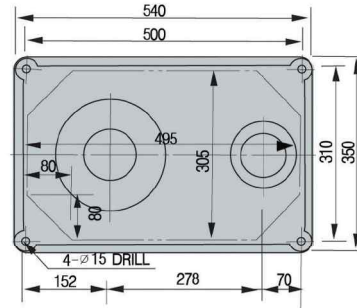
NO.	PART NAME	MATERIAL						Q'ty
		CLASS 1	CLASS 2	CLASS 3	CLASS 4	CLASS 5	CLASS 6	
102.1	VOLUTE CASING	GC 200	GC 250	GCD 450	SSC 13	SSC 14	SSC 16	1
141.1	ADAPTER	GC 200			SSC 13	SSC 14	SSC 16	1
143.1	SUCTION STRAINER	STS 304				STS 316	STS 316L	1
161.1	CASING COVER	GC 200	GC 250	GCD 450	SSC 13	SSC 14	SSC 16	1
210.1	SHAFT(UPPER)	SM 45C			STS 304	STS 316	STS 316L	1
211.1	SHAFT(LOWER)	SM 45C			STS 304	STS 316	STS 316L	1
230.1	IMPELLER	GC 200	GC 250	GCD 450	SSC 13	SSC 14	SSC 16	1
310.1	SLEEVE BEARING	LBC 4			CARBON			
321.1	BALL BEARING	STB 2						1SET
350.1	BEARING HOUSING	GC 200						1
360.1	BEARING COVER							1
383.1	BEARING SPIDER	GC 200			SSC 13	SSC 14	SSC 16	1
452.1	PACKING GLAND	CAC 406			SSC 13	SSC 14	SSC 16	1
458.1	LANTERN RING				SSC 13	SSC 14	SSC 16	1SET
461.1	PACKING	NON METALLIC						1
502.1	CASING WEAR RING	CAC 406			SSC 13	SSC 13	SSC 16	1
523.1	SHAFT SLEEVE	STS 304				STS 316	STS 316L	1
526.1	BEARING SEAT	SM 45C						1
149.1	DISCHARGE PIPE				STS 304TP	STS 316TP	STS 316LTP	1
711.1	COLUMN PIPE	SPP + SS 400			+STS 304	+STS 316	+STS 316L	1
711.2	COLUMN PIPE							1
852.1	SCREWED COUPLING	STS 304			STS 304	STS 316	STS 316L	1
861.1	COUPLING	GC 200						

Model	EWW-40A,50A		EWW-40B,50B,65B,80B,50C,65C,65CX		EWW-80C,100C		EWW-100B,125B,150B,125C,150C,80D,100D,125D		EWW-125E,150D,150E,200C	
Column heam(m)	0.8~1.6	1.8~2.8	0.8~1.6	1.8~3.0	0.8~1.8	2.0~3.2	0.8~2.0	2.2~3.4	1.0~2.2	2.4~3.8
Type	A	B	A	B	A	B	A	B	A	B

## 외형치수도 / Outline dimensions



Type "A"



Type "B"

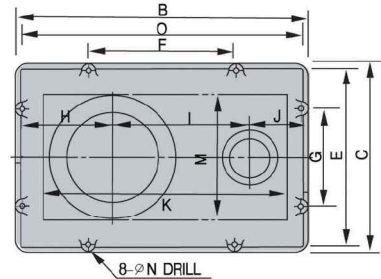


TABLE A

· 치수는 참고용임

TYPE	DIS. BORE	PUMP & BASE PLATE DIMENSION														
		A	B	C	D	E	F	G	H	I	J	K	M	N	W	
40A	Ø 32	TYPE "A" :30	670	430	630	390	330	220	220	280	130	570	330	15	280	
40B																
50A																
50B	Ø 40	TYPE "B" :55	770	500	730	460	430	250	240	345	145	670	400		330	300
50C																
65B	Ø 50	55	770	500	730	460	430	250	240	345	145	670	400		400	330
65C																
65CX																
80B	Ø 65	55	880	560	840	520	440	300	285	400	155	780	460		415	
80C																
80D																
100B	Ø 80	55	920	590	880	550	460	300	285	430	165	820	490		445	
100C																
100D																
125B	Ø 100	55	920	590	880	550	460	300	285	430	165	820	490		525	
125C																
125D																
125E	Ø 125	70	1190	740	1150	700	600	370	380	570	200	1090	640	570		
150B																
150C																
150D	Ø 125	55	1060	640	1020	600	530	320	310	525	185	960	540	570		
150E																
150E	Ø 125	70	1190	740	1150	700	600	370	380	570	200	1090	640	570		
150E																

TABLE B Column Head에 따른 Baseplate 적용표

MODEL	EWV-40A,40B,50A,50B,65B		그 외 전 MODEL(The other model)
	0.8~1.6	1.8~2.8	
Column head(mm)	A	B	ALL
Type			B