

[www.sejinheavy.com](http://www.sejinheavy.com)



**SEJIN SEJIN HEAVY INDUSTRIES**

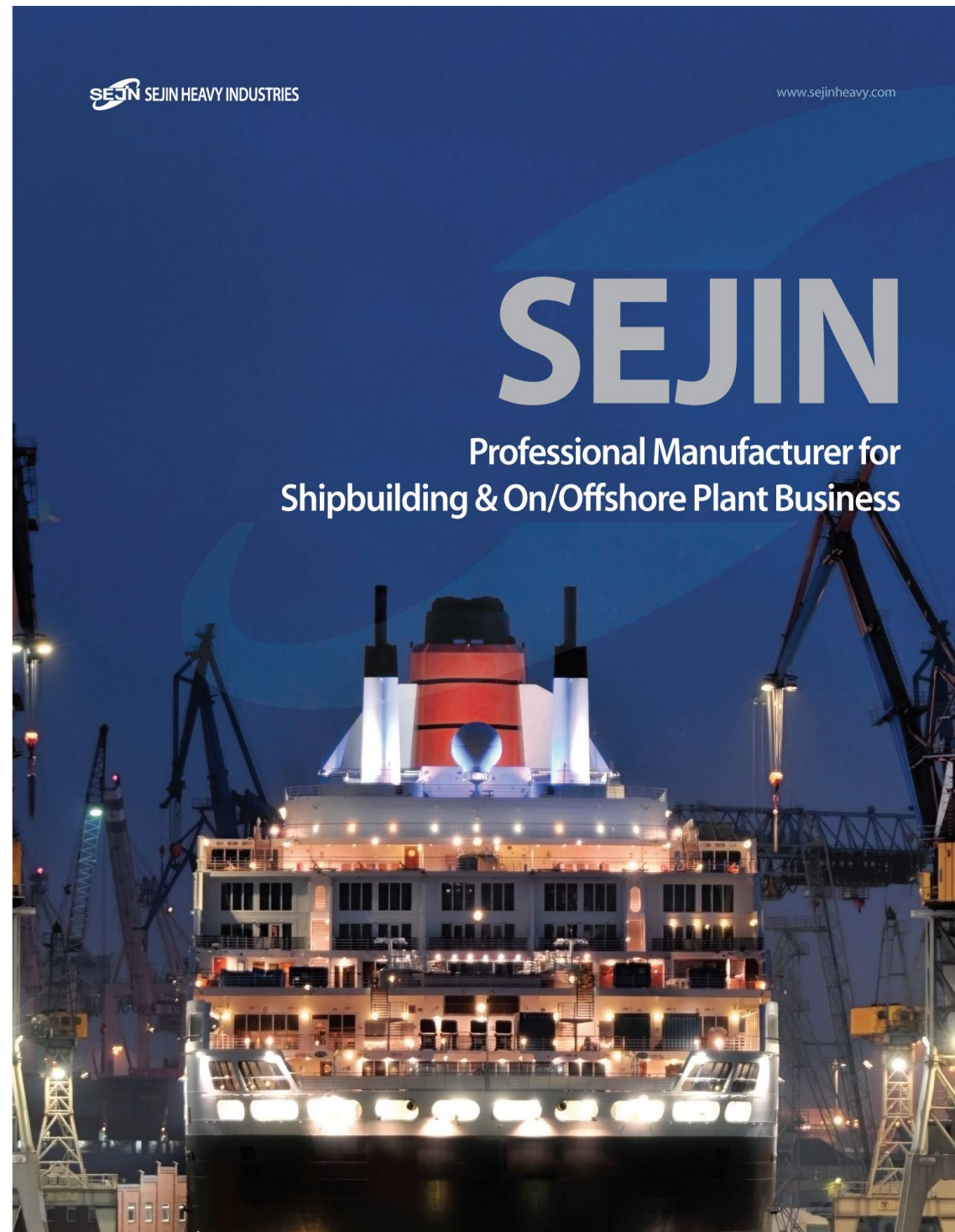
216-18 Dangwol-Ro, Onsan-Eup, Ulsan, Korea  
Tel : +82-52-231-8000 Fax : +82-52-239-7010  
Offshore : [offshore@sejinheavy.com](mailto:offshore@sejinheavy.com) Shipbuilding : [jjison@sejinheavy.com](mailto:jjison@sejinheavy.com)

**SEJIN SEJIN HEAVY INDUSTRIES**

[www.sejinheavy.com](http://www.sejinheavy.com)

# SEJIN

Professional Manufacturer for  
Shipbuilding & On/Offshore Plant Business



## CONTENTS

Brief History	04
Products	06
Performance Record	12
Factories	14
Facilities	16
Q.A	18
H.S.E	20
Social Contribution	22
Location & Accessibility	23

## Message from CEO

### SEJIN is making the Ocean Power of Korea.

SEJIN Heavy Industries is one of Korea's leading shipbuilding equipment companies which headquarter is located in Ulsan with 2 factories. SEJIN Heavy Industries has manufactured and supplied deck house, various blocks and tanks to world's best shipbuilding companies such as Hyundai Heavy Industries, Samsung Heavy Industries, and Daewoo Shipbuilding & Marine Engineering.

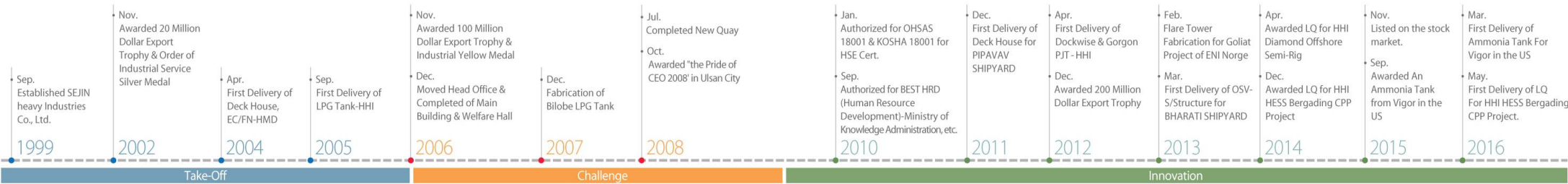
SEJIN Heavy Industries is investing not only in the continuous development of technology but also in culturing its planning ability and facilities. It has established a unique technology development research center for the new project along with the expansion of the space and manufacturing facilities. Furthermore, through the strategic partnership with world's leading companies, we are planning to provide the products and services that exceed the expectation of our clients.

With around 400 core manpower and 3,000 site workers, SEJIN Heavy Industries obtains high qualification and abilities to achieve the world standard in shipbuilding and on / offshore industries. All members of SEJIN Heavy Industries are trying their best to supply clients with the best quality.

The management philosophy of SEJIN Heavy Industries is client-first value which means to provide the goods and services to the clients before they look for it for their optimal satisfaction. SEJIN Heavy Industries promises you that we will continuously work towards our future goal with our clients.

# Brief History of SEJIN

## Everlasting success



Take-Off

Challenge

Innovation

# Products



## Deck House Engine Casing & Funnel

Deck House Engine Casing & Funnel is a structure built on the main deck of a ship and can be likened to a marine hotel which usually has four(4) to nine(9) floors depending on the size of the ship. It provides ship operation and resident facility such as crew accommodations, main control room, machine room, etc. Some materials and equipment are so complex to install that professional man-power and exclusive working area are required.



## Super Structure (Deck House) - OSV (Offshore Supply Vessel)



### - PSV (Platform Supply Vessel)

is a ship specially designed to supply offshore oil platforms.

These ships range from 20 to 100 meters in length and accomplish a variety of tasks. The primary function for most of these vessels is transportation of goods and personnel to and from offshore oil platforms and other offshore structures.

### - AHTS (Anchor Handling Tug Supply Vessel)

is mainly built to handle anchors for oil rigs, tow them to location, anchor them up and, in a few cases, serve as an Emergency Rescue and Recovery Vessel (ERRV). They are also used to transport supplies to and from offshore drilling rigs.



## LPG Cargo Tank



LPG Cargo Tank is the most important and vital structure in LPG Carrier(ship) which transports LPG(Liquefied Petroleum Gas) and needs to be manufactured by well-experienced and skilled workers. Sejin has been maintaining its exclusive position in production and supply of LPG Tanks in Korea since its construction of a dedicated factory for production of LPG Tanks.



## Engine Room



Engine Room basically is assembled into the main engine as a basic component with function which is responsible for vessel's driving System and combined with some kind of piping system and special equipments.

## Upper Deck (Deck Unit)

Upper Deck(Deck Unit) means hurricane deck and takes charge of the length strength of a ship on the structure, and we are manufacturing upper deck Units for crude oil carriers and product oil carrier, etc. Upper Deck Unit is a kind of modular assembled together with necessary piping spools, electric cable, walk-way and other steel structures.



## Mega Block

Mega Block is an assembly of a number of conventional blocks between two cross sections of a ship such as stern, bow, and midship sections. It may be regarded as kind of partial "on-ground fabrication". High lifting capacity of erection equipment (Goliath Crane) and facility are required to handle and erect large blocks. High level of technology is also required to install out-fittings, machinery and electric components.



## Living Quarter

Living Quarter is essential requirement for the safe operation and life support requirements for personnel in the offshore Oil and Gas industry.

We provides living quarters for drill ship, FPSO, Semi-submersible etc., which meet the varied standards and certifications in the international market to the sailors who work long time on the sea so that they can improve their productivity at best.



## Jack-up Barge

Jack-up Barge is ideal solution for offshore construction, renewables and marine engineering projects. These can be supplied with spud legs or multi-point mooring systems.

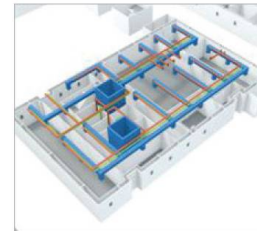
We provides crane barges, accommodation barges, semi-submergible barges etc.



## Topside Module

Topside Module is surface installations, which allow the drilling, production and processing of offshore resources.

We provides topside modules such as pre-assembled module, gas process package, water treatment packages etc.



Our offshore division operates within a wide spectrum of projects various size and complexity with well experienced personnel.

## Services for Offshore Business

- Project management
- Engineering
- Detail Design (3D modeling w/ PDMS)
- Technical Clarification and Documentation
- Fabrication and Construction
- Mechanical Completion
- Pre-Commissioning and Commissioning
- Load-Out and Sail Away

# Performance Record

## Shipbuilding



## Sales



## Deck House

Year	Ton	Ship	Client
2011	86,000	113	HMD+HHI+STX+SLS
2012	88,000	110	HMD+HHI+STX
2013	93,000	116	HMD+HHI+STX
2014	90,000	118	HMD+HHI
2015	98,000	129	HMD+HHI
2016	52,200	103	HMD+HHI+STX

## Super Structure(Deck House) - OSV(Offshore Supply Vessel)

Year	Type of OSV	Ship	Client
2012	PSV	3	Bharati Shipyard, India
	AHTS	2	
2013	PSV	4	HMD

## LPG Cargo Tank

Year	Ton	Ship	Client
2011	16,000	8	HHI+HMD
2012	30,000	10	HHI+HMD
2013	57,000	12	HHI+HMD
2014	72,400	19	HHI+HMD
2015	125,000	30	HHI+HMD
2016	92,400	30	HHI+HMD

## Upper Deck (Deck Unit)

Year	Ton	Ship	Client
2011	27,000	31	HMD+STX
2012	39,000	33	HMD+STX
2013	24,000	24	HMD+STX
2014	41,000	45	HMD
2015	33,000	37	HMD
2016	30,400	46	HMD

## Engine Room

Year	Ton	Client
2009	21,000	DSME
2010	15,000	DSME+STX
2011	29,000	DSME+STX

## Ring/Mega Block

Year	Ton	Client
2009	79,000	STX+SLS
2010	150,000	STX+SLS
2011	98,000	STX+SLS

## On/Offshore



## Living Quarter

Project	Bergading CPP
Owner	HESS
Weight	1,950 ton
Delivery	2016
Project	Semi-Rig
Owner	Diamond Offshore
Weight	1,900 ton
Delivery	2015

## Flare Tower Module

Project	Goliat FPSO
Owner	Eni Norge
Weight	400 ton
Delivery	2014

## Pipe Rack Module

Project	Gorgon
Owner	Chevron
Weight	3,800 ton
Delivery	2012

## Hull Structure

Project	Dock Wise
Owner	Dock Wise
Weight	7,735 ton
Delivery	2012



# Factories



## Factory Summary

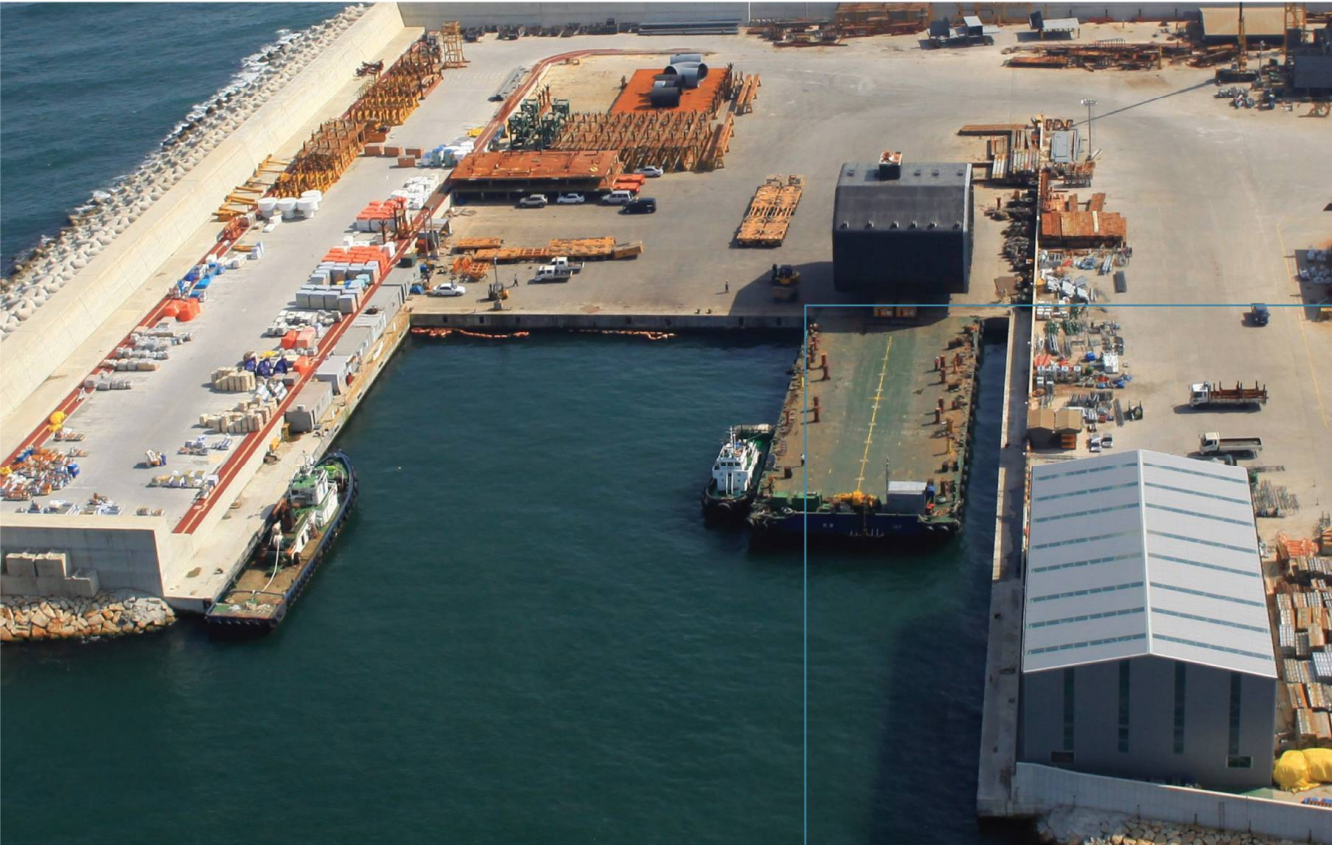
Factory	Won-San			Hak-Nam
	Yard 1	Yard 2		
Address	216-18 Dangwol-Ro, Onsan-Eub, Ulju-Gun, Ulsan, Korea			17 Hoehak 1 Gil, Onsan-Eub, Ulsan, Korea
Area (m <sup>2</sup> )	Land	275,000	205,000	113,000
	Floor	31,500	12,500	-
	<b>Total</b>	<b>615,000 m<sup>2</sup></b>		
Status	LPG Tank, Mega BLK, E/Room, Offshore	D/House, Mega BLK, E/Room, Offshore	Under Construction	Sub Ass'y

## Shop Information

Shop	Shop Description	Q'ty	Remark
Insulation Shop	27m(W) X 40m(L) X 26m(H)	6	
	24.5m(W) X 40m(L) X 26m(H)	1	
Painting Shop	24m(W) X 37m(L) X 12(14)m(H)	6	Dehumidifier is equipped
	34m(W) X 37m(L) X 12m(H)	1	
Blasting Shop	30m(W) X 37m(L) X 15m(H)	1	Dehumidifier is equipped
RT Room	29m(W) X 21m(L) X 12m(H)	1	Wall 800mm Ceiling 800mm



# Facilities



## Quay

- Quay Specification
- Width : 80 m
- Length : 100 m
- Depth : 8.5 m(Average)
- Available Berthing Barge
- Depth : 8.5 m
- Maximum : 20,000 P
- Available Transport
- Module Car : Max 6,000 ton

## Crane



Transporter



SPMT

## Goliath Crane



## Others Crane

- Semi Gantry Crane : 11 ea
- Gantry Crane : 14 ea
- Over Head Crane : 48 ea
- Tower Crane : 9 ea
- Crawler Crane : 8 ea



Gantry Crane



Tower Crane



Crawler Crane

# Q.A

We are making all kinds of efforts to maintain, improve and develop the highest quality continuously for customer satisfaction.

## ISO Certification

SEJIN Heavy Industries has been implementing to ensure exacting international quality standards. SEJIN obtained total management system certificate for ISO 9001 : 2008 from the international certification institute(HSB Registration Services) and accordingly achieved quality reliability toward domestic as well as foreign customers. Basically, we are manufacturing our products satisfied with all contract specification, designed regulations and international standards and trying to meet various requirements of customers.



## Approval of welding and welding shop

SEJIN obtained the certificates for approval of welding process and welding shop from the international ship's classifications.



## Approval of WPS



# H.S.E

DET NORSKE VERITAS



DNV KOREA LTD.  
HMD Station  
Ulsan  
HMD Station c/o Hyundai Mipo  
Dockyard Co., Ltd. 1381 Banggo-  
dong, Dong-Gu  
Tel: 82 52 232 5815/6  
Fax: 82 52 232 5837  
http://www.dnv.com

Sejin Heavy Industries Co., Ltd.  
#250, Wosan - Ri, Onsan-Eup,  
Ulju-Gun, Ulsan City, Korea.  
(689-892)

Att.: Mr. S.T. Lee / Deputy Manager / QA Dep't

Your ref.: Our ref.: Date:  
PKJKR152YJH121026-1 2012-10-26

**Approval of "Hull Block Fabrication Shop"**

Dear Sir,

Annual Audit was carried out at SEJIN HEAVY INDUSTREIS CO.,LTD. on 2012-09-27 in order to verify compliance with DNV Rules Pt.1 Ch.1 Sec.2 A200 – "Requirement for Builder or Designer"

The result from the audit was found satisfactory and consequently our approval has been granted for one (1) year period from the annual audit date.

Please be informed that "Unscheduled Audit" will be carried out by a DNV surveyor within the validity of approval depending on the observed manufacturing quality.

Possible non conformities revealed during "Unscheduled Audits" are to be rectified in a timely manner by SEJIN HEAVY INDUSTRIES CO.,LTD. in order to maintain continuing approval.

The application for annual audit is to be submitted to DNV HMD station not later than 2 months before expiry.

Yours faithfully  
for DNV KOREA LTD.



Choi, Hwan-Cheol  
Station Manager  
HMD Station

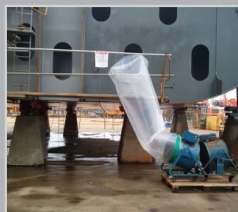


Yang, Jun-Ho  
Senior Surveyor

Copy : DNV HHI Station Manager / DNV STX Station Manager / DNV DSME station Manager

Corporate Headquarters: Det Norske Veritas AS, 1322 Havik, Norway - www.dnv.com

12092802DNVAnnual Approval letter.docx.usd



## 01

### 1. HSE Education

- 1.1 IIF(Incident & Injury Free) education
- 1.2 RCA education
- 1.3 TBM(Tool Box Meeting) education
- 1.4 PSM education
- 1.5 Risk assessment education

## 02

### 2. HSE Meeting

- 2.1 Industrial Safety and Health Committee
- 2.2 HSE consultative meeting
- 2.3 Weekly HSE meeting

## 03

### 3. Safety Activity

- 3.1 Mass HSE activity
- 3.2 Safety campaign
- 3.3 TBM(Tool Box Meeting)
- 3.4 Injury free activity
- 3.5 5MST(5 Minutes Safety Training)
- 3.6 Site Inspection

## 04

### 4. Health Activity

- 4.1 Health care office
- 4.2 Medical check-up(regular & special)
- 4.3 Working environment measurement
- 4.4 Cure & emergency rescue



# Social Contribution



## The Best of Best

- World's best manufacturing capacity of deck house
- Received citation from Solvang ASA for the best performance.
- 200 million US dollars export award
  - Year 2012 export and merit award by Korea International Trade Association.
- Listed on the Korea Stock Exchange in 2015

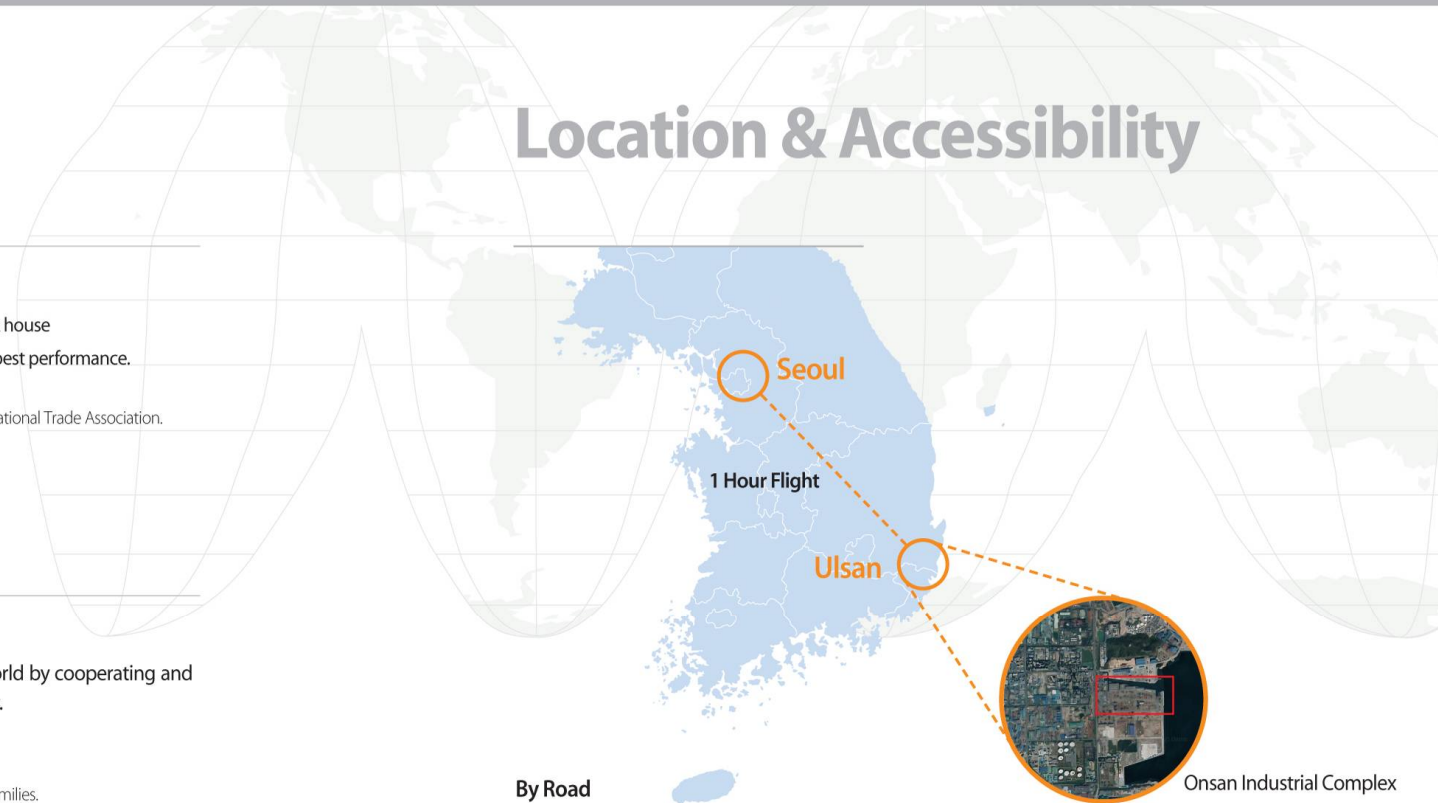


## Social Contribution

SEJIN Heavy Industries creates a happy world by cooperating and sharing our hope together with the society.

- Sponsor local agriculture and fisheries
  - Purchase of local agricultural products.
  - Sponsor farming machinery to sister-agriculture families.
  - Voluntary service in senior center.
- Social Contribution
  - Sponsor multi-cultural families.
  - Making Kimchi event.
  - Charity bazaar.
  - Sponsor experience learning in a care center for the disabilities.
  - Donation to Community Chest of Korea.
- Environment Saving Activities
  - Participation in 1 person 1 River saving campaign
  - Participation in Water's day event
  - Ocean environment purification activity
  - Rescue operation in ocean disaster

# Location & Accessibility



## By Road

Well organized road infra of industrial complex and 30 mins distance to Ulsan down-town.

## By Air

The Ulsan Domestic Airport is located at 21km away from the factory, which takes around 30mins by car.

## By Sea

Easy access to East Sea of Korea from our own quay.



Onsan Industrial Complex

Address	216-18 Dangwol-Ro, Onsan-Eup, Ulsan, Korea
Tel	+82-52-231-8000
URL	www.sejinheavy.com
E-mail	Offshore : offshore@sejinheavy.com Shipbuilding : jiison@sejinheavy.com