

# 10.4" Digital LED Fishfinder

SDF-310

## SPECIFICATIONS(SDF-310)

### ■ GENERAL

- Operating Frequencies : Dual Frequencies(50/200 kHz)
- Output Power : 1/1.2/1.5/2/2.5/3 kW
- Power Reduction : 10 ~ 100 % (in 10 % step)
- User Frequency : 28/38/50/55/68/75/82/88/95/100/107/150/200 kHz(2 Frequencies selection)

### ■ DISPLAY

- Display : 10.4" color LED (SVGA: 800 x 600)
- Color : 8/16/32/64 color
- Brightness : 500 cd/m<sup>2</sup>
- Tx Rate : 20 ~ 3000/min
- Pulselength : Standard/Short/Middle/Long
- Rx Band : Narrow/Standard/Wide
- Amplifier : High dynamic range
- Ranges : 3 ~ 3000 m
- Shift : 0 ~ 2000 m
- Display Mode : Single(LF/HF), Dual, Single+Zoom, Custom modes 1,2, Zoom mode(Bottom lock, Bottom zoom, Marker zoom), MIX mode, Nav data, A-scope

- Picture Advance Direction : Left, Right
- Picture Advance Speed : Stop, 1/16, 1/8, 1/4, 1/2, 1/1, 2/1, 4/1
- Alarms : Audio, Fish, Depth, Water temperature, Nav data
- Others : Auto Mode, Color Erase, Interference, TVG, Clutter, Temp Graph, A-scope, White Marke

### ■ ENVIRONMENTAL CONDITIONS

- Operating Temperature : -15°C ~ +55 °C

### ■ DATA INTERFACE

- Data Interface : NMEA 0183

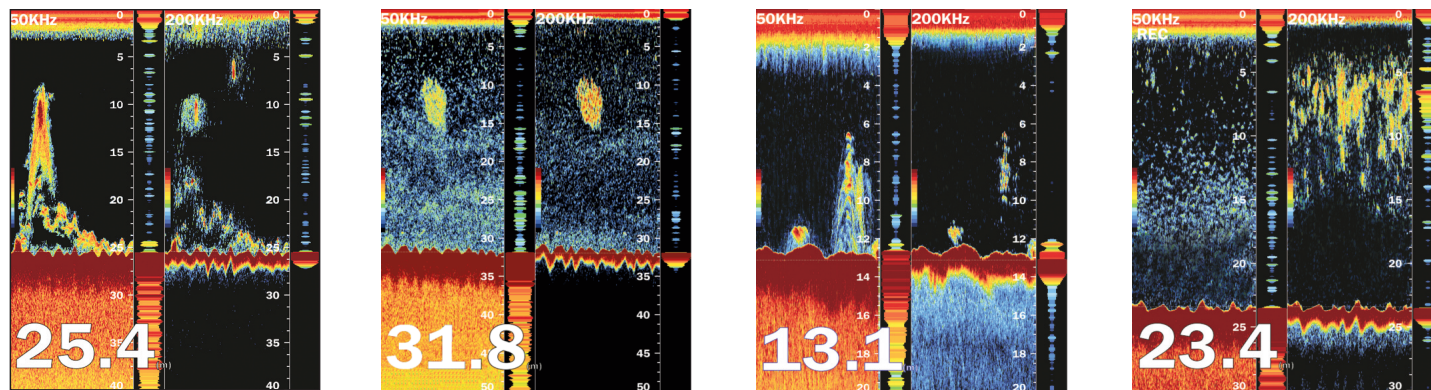
### ■ POWER SUPPLY

- Power Supply : 12/24 VDC, 50W max.

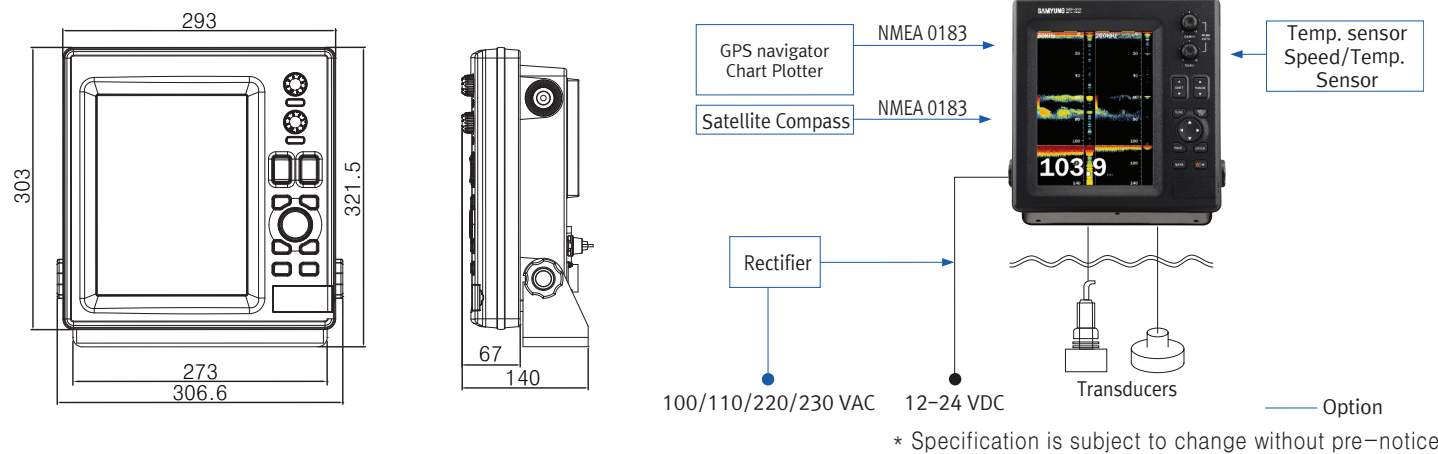
### ■ EQUIPMENT LIST

- Standard : Display Unit, Transducer(1/1.2/1.5/2/2.5/3KW), Installation Materials and Standard Spare Parts
- Option : Speed/Temperature Sensor, Temperature Sensor NMEA Cable, Rectifier

## FISHFINDER SCREEN



## DIMENSIONS/CONFIGURATION



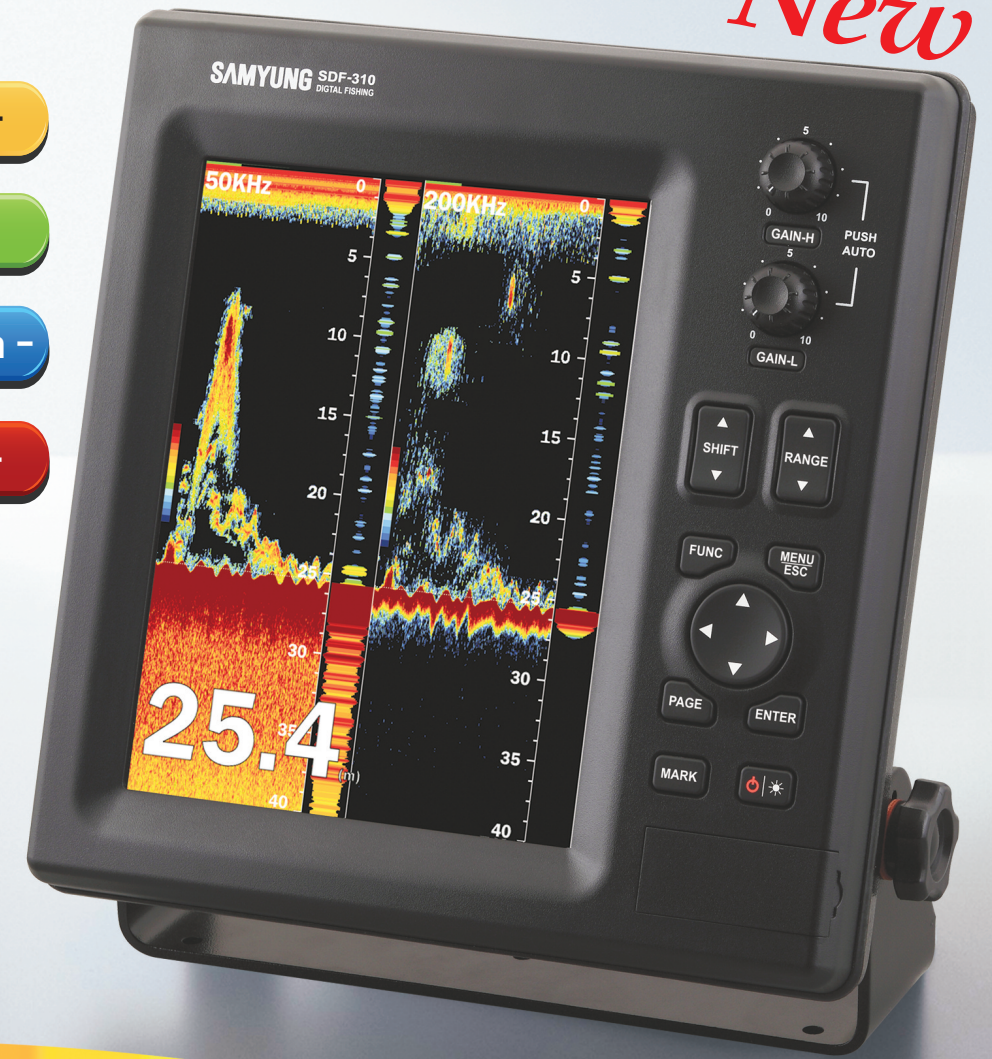
WWW.SAMYUNGENC.COM

# 10.4" Digital LED Fishfinder SDF-310

28/38/50/55/68/75/82/88/95/100/107/150/200 kHz  
 1/1.2/1.5/2/2.5/3KW

*New*

- Multi frequency choices -
- Multi output choices -
- Low noise · High resolution -
- Digital filter technology -

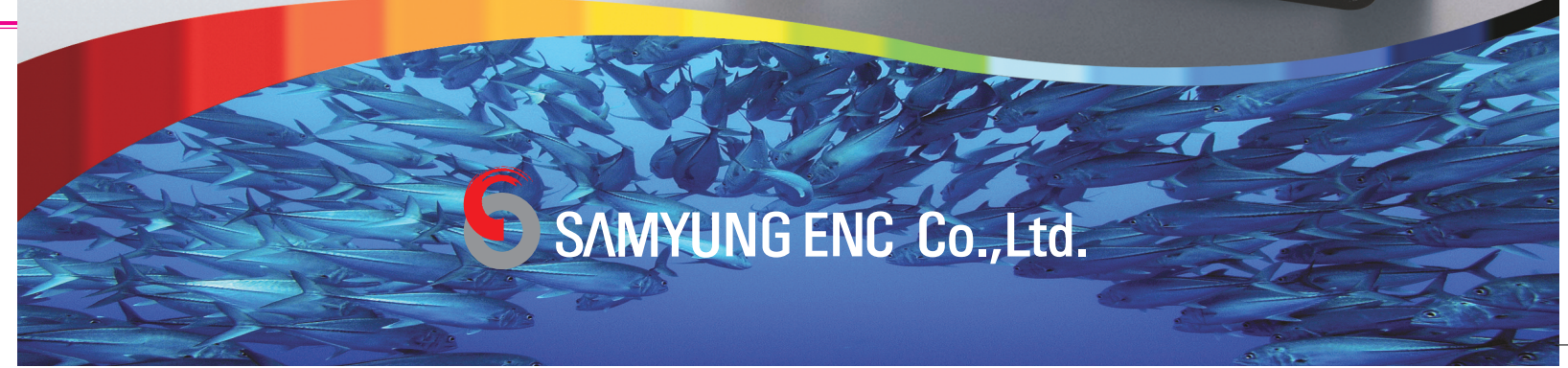


## SAMYUNG ENC Co.,Ltd.

Head Office : 69, Sangni-Ro, Youngdo-Gu, Busan, Korea, 606-083  
 Tel : 82-51-601-5530(Rep.) Fax : 82-51-413-4446  
 A/S Center : 76, Jeoryeoung-Ro, Yungdo-Gu, Busan, Korea, 606-802  
 Tel : 82-1577-0198(ARS) Fax : 82-51-416-5515  
 Http : //www.samyungenc.com

ISO 9001:2000 / KS A 9001:2001  
 Certificate No. : RQM0645

## SAMYUNG ENC Co.,Ltd.





# 10.4" Digital LED Fishfinder

- Quick Switch of display when changing depth, enlarge, minimize with **high performance CPU**
- **Multi frequency choices** and frequency **fine tuning** function
- **Automatic Pulse output change** allows improved fish school distinguishability
- **Digital filter technology** allows display of weak fish school signal

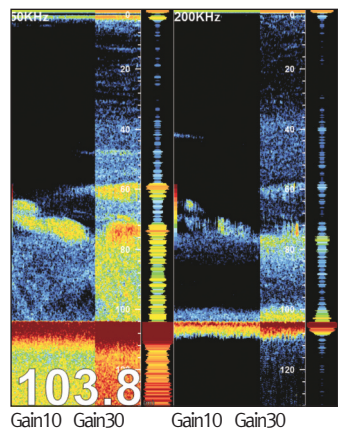


SDF-310

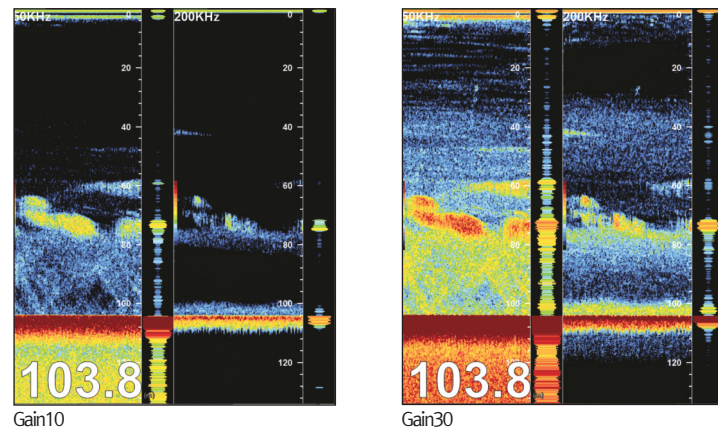
### Easy and quick gain setting control

- When gain changes are applied, the previous echoes are applied at the same as the new echoes
- Allows to display weakly recorded fish group

Fish school display to gain change

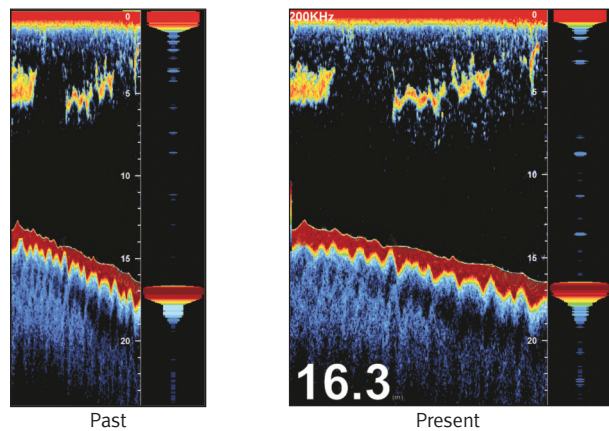


Full display to gain change



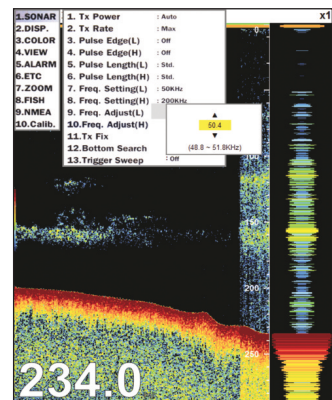
### Allows to display weakly recorded fish group

- 30% increase of transmitting speed allows more detailed fish school to be displayed



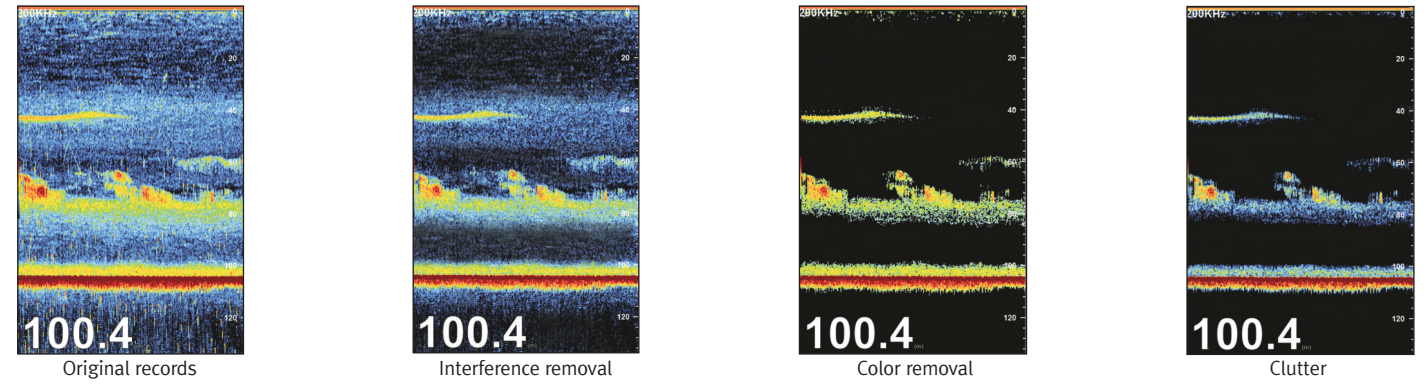
### Fine tuning of transmitting frequency

- Fine tuning over all frequencies including low and high transmitting frequencies



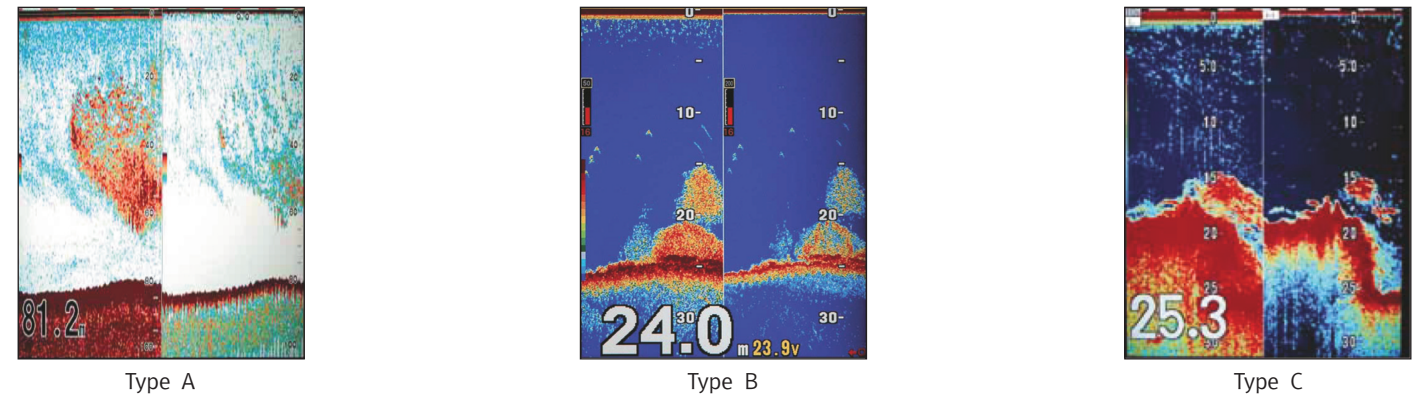
### Progressed image processing technology

- Express image with various filtering process : Interference removal, noise removal, clutter, color removal and digital filter area setting



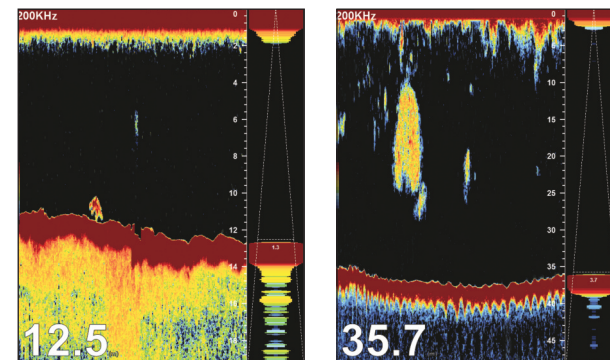
### Selectable display color

- Use may select preferable color display



### Display area detected on A-SCOPE

- Display area of seabed transmitted by the beam angle from transducer on A-scope to increase ease of work



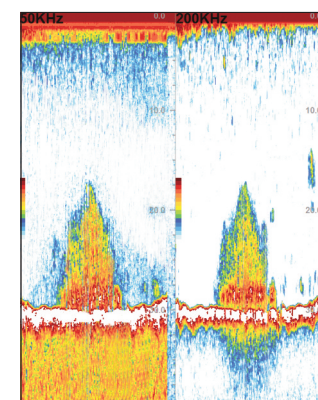
### Multi-frequency and the output

- The selection of transducers with various frequencies and output is available
- 28/38/50/68/82/88/107/150/200 kHz
- Dual frequencies
- Transmission output can be selected from 1/1.2/1.5/2.5/3KW
- Connectable with past transducers

\* Beam angle may vary depending on the frequency of the transducer and the installation method.  
The data displayed on the equipment should be used for reference only

### Display white line

- White line applied to easily discern seabed from the fish school or reef



\* Display the strong signal from seabed in the white line in order to easily distinguish between fish group and seabed

### Digital filter technology

- Digital filter technology applied to display the weakest echoes from small fish and reduce noise at the same time

