



NAVIGATIONAL  
**ECHO SOUNDER**  
SES-5000



- ✓ 10.4" WIDE COLOR LCD
- ✓ MAX,24HOURS LONG MEMORY
- ✓ ALARM FOR DESINATED DEPTH
- ✓ BUILT IN TERMAL PRINTER
- ✓ USER FRIENDLY MENU



IMO STANDARDS MSC.74(69) ANNEX 4



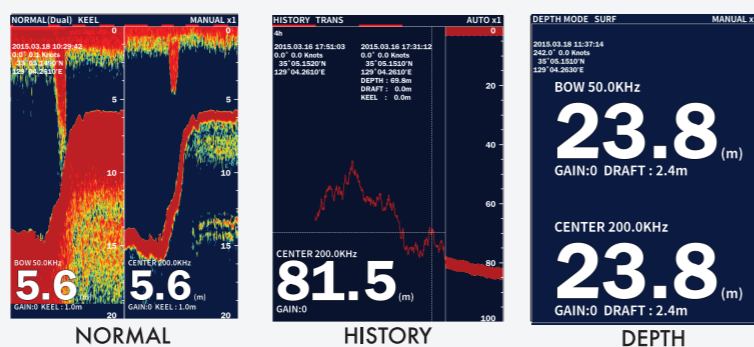
 **SAMYUNG ENC Co.,Ltd.**

Head Office : 69, Sangni-Ro, Youngdo-Gu, Busan, Korea, 606-083  
Tel : 82-51-601-5530(Rep.) Fax : 82-51-413-4446

A/S Center : 1, Ilsanbong-Ro, Yungdo-Gu, Busan, Korea, 606-819  
Tel : 82-1577-0198(ARS) Fax : 82-51-416-5515

### FEATURES

### DISPLAY MODE



Select a desired screen mode.

## SES-5000

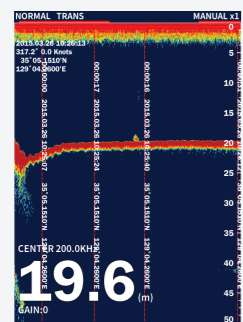
Range mode  
Display mode  
Time bar  
Display speed

GPS info

Bottom  
Frequency  
Transducer position  
Depth

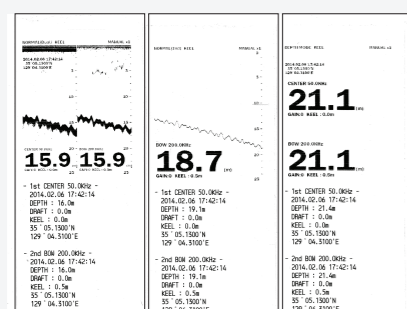
Draft or keel height  
Gain value  
Thermal printer

### MARK



Mark lat/lon, time and location

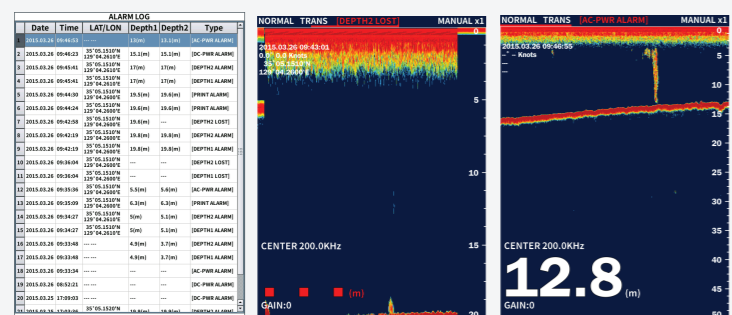
### PRINTER



(Paper width : 57mm)

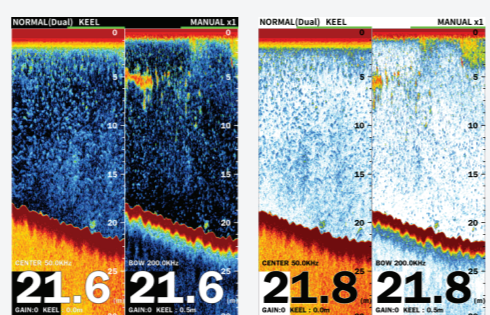
Print the data displayed on the current screen.

### ALARM



Last 99 memorized alarm logs display, last 20 memorized alarm log printed. When printer becomes abnormal, AC power failed alarm alerts.

### BACKGROUND



Change background color according to the surrounding environment.

### Display

|                               |   |
|-------------------------------|---|
| Display                       | 10.4 color LCD(600x800 pixel)   |
| Frequency                     | 50KHz / 200KHz  |
| Output Power                  | 1kw, 1.5kw  |
| Color                         | 8/16/64 colors, Background : Selectable among 5 colors                          |
| Range                         | 5, 10, 20, 50, 100, 200, 500, 800, 1000m  |
| Depth accuracy                | +2.5%   |
| Minimum sounding depth        | 50KHz : 1.7m, 200KHz : 0.6m   |
| Draft                         | 0-50m   |
| Display mode                  | Single, Dual, Replay, Depth   |
| Screen speed                  | x4, x2, x1, x1/2, 1/4, 1/8, Stop  |
| Alarm function                | Depth, Power fail, System error   |
| Auto display                  | Auto gain(fishing/sailing), Auto depth  |
| Noise reduction               | Off, Light, Medium, Strong or Frequency adjustment (Range depends o transducer) |
| Replay function(Data storage) | 24hrs(30secs save interval)   |
| Time mark                     | 30secs  |
| Software Version              | 1.0.0   |

|                       |  |
|-----------------------|--|
| Power supply          | Main 100-230VAC, 50/60Hz ±5%<br>Sub 22-30VDC   |
| Operation environment | Temperature : Main equipment -15°C - +55°C<br>Humidity : Less than 93% (+30°C - +60°C) |

### Interface

|                     |   |
|---------------------|---|
| Number of port      | NMEA0183 VER1.5/2.0/3.0(I/O)-2port          |
| Input data          | GGA, VTG, ZDA                               |
| Output data         | DBT, DBS, DPT, GGA, GLL, GSA, GSV, VTG, ZDA |
| Output alarm signal | Depth, Power fail, System error             |

### COMPONENT

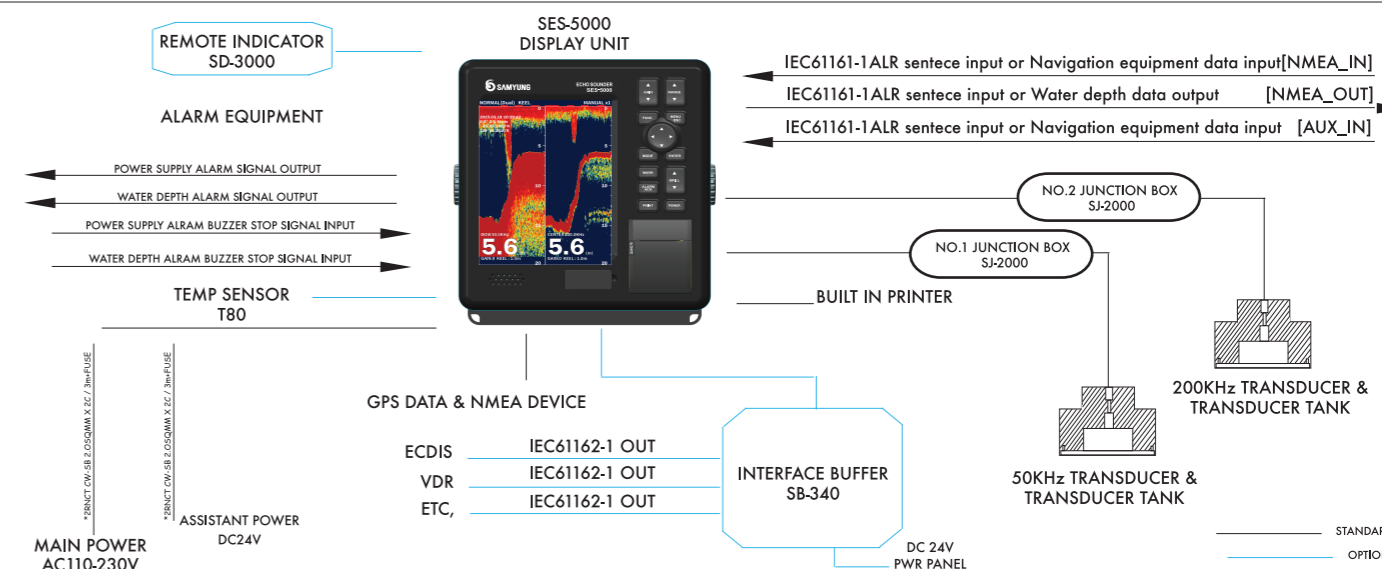
#### Standard

|                  |          |
|------------------|----------|
| Main unit        | SES-5000 |
| Installation set |          |
| Manual           |          |

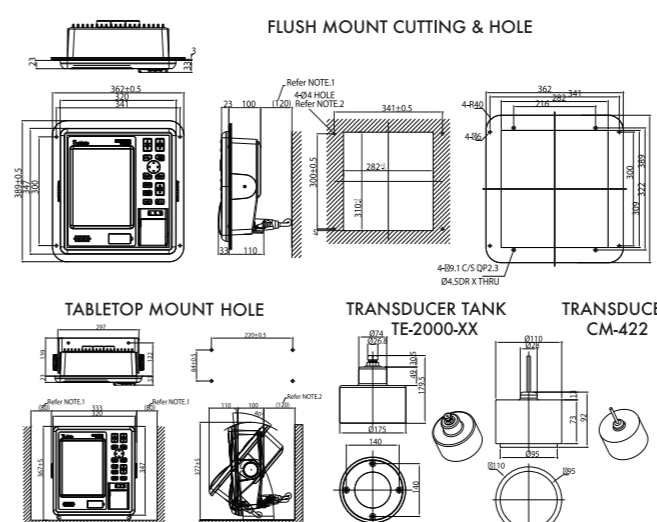
#### Option

|                   |            |
|-------------------|------------|
| Interface unit    | SB-340     |
| Water temp sensor | T80        |
| Depth indicator   | SD-3000    |
| Dimmer controller | DM-3001    |
| Transducer tank   | TE-2000-XX |
| Junction box      | SJ-2000    |

### DIAGRAM



### INSTALLATION



### DIMENSION

