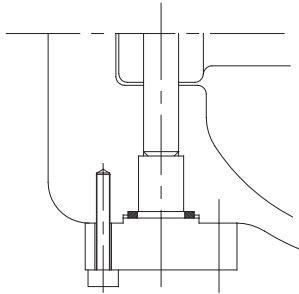


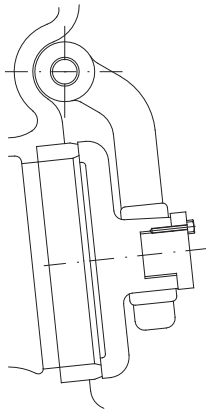
# SWING CHECK VALVES

BOLTED COVER

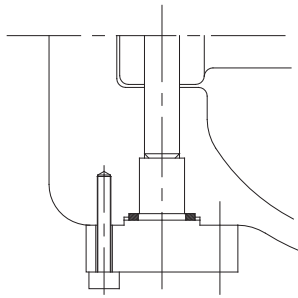
## SW/CH CLASS 1500



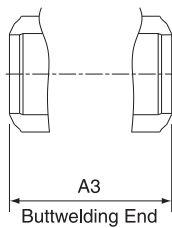
8" & Under



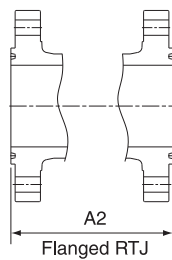
8" & Lager



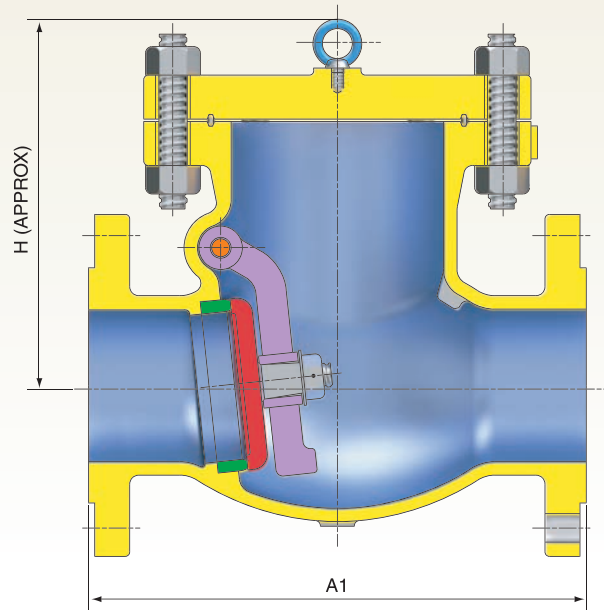
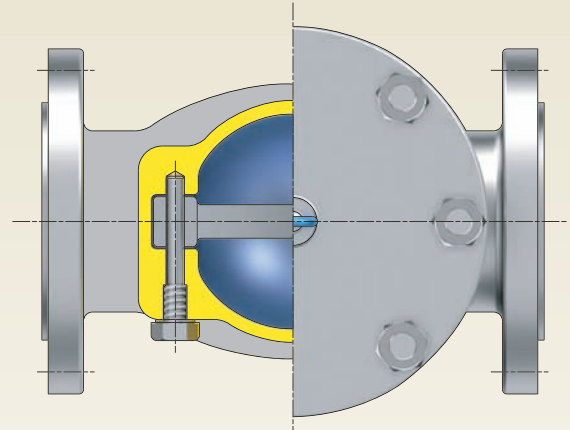
10" & Lager



A3  
Buttwelding End



A2  
Flanged RTJ



VALVE SIZE	in	2	2.5	3	4	6	8	10	12	14	16	18	20	24	
	mm	50	65	80	100	150	200	250	300	350	400	450	500	600	
A1 & A3	in	14.5	16.5	18.5	21.5	27.8	32.8	39.0	44.5	49.5	54.4	60.5	65.5	76.5	
	mm	368	419	470	546	705	832	991	1130	1257	1383	1537	1664	1943	
A2	in	14.6	16.6	18.6	21.6	28.0	33.1	39.4	45.1	50.2	55.3	61.4	66.4	77.6	
	mm	371	422	473	549	711	841	1000	1146	1276	1405	1559	1686	1972	
H	in	12.2	13.0	14.8	17.0	22.3	26.3	28.9	35.6	40.7	42.0	47.1	51.1	57.1	
	mm	309	331	375	433	567	668	734	904	1035	1067	1197	1299	1451	
WEIGHT	RF	lb	154.3	220.5	374.8	467.4	1067.0	2623.5	4078.5	7341.3	7936.5	10802.5	14550.3	17967.4	25903.9
		kg	70	100	170	212	484	1190	1850	3330	3600	4900	6600	8150	11750
	BW	lb	112.4	191.8	308.6	361.6	813.5	2127.4	3262.8	6084.7	6250.0	8597.9	11574.1	14219.6	19841.3
		kg	51	87	140	164	369	965	1480	2760	2835	3900	5250	6450	9000