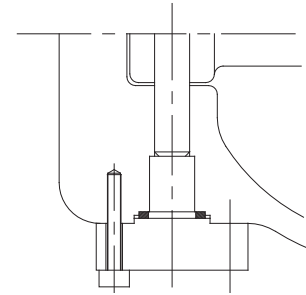
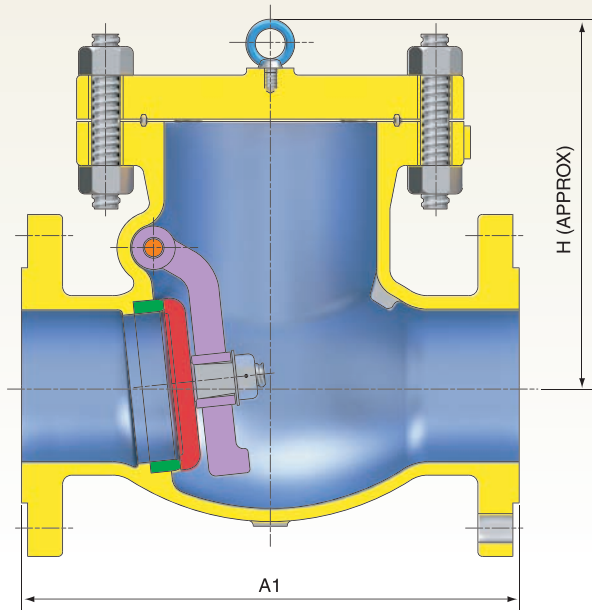
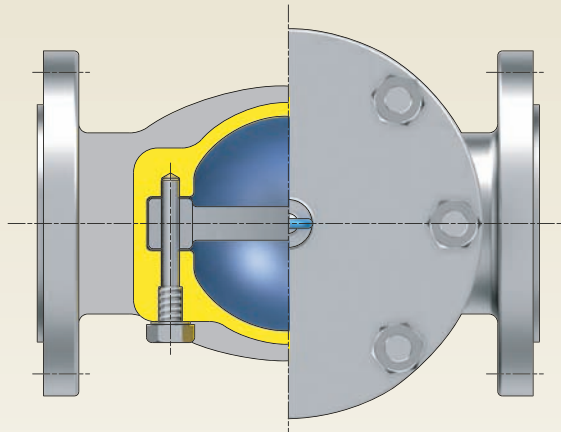


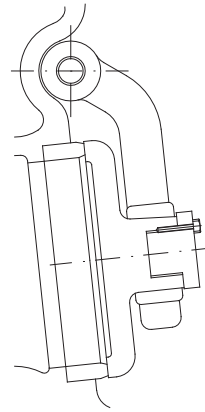
SWING CHECK VALVES

BOLTED COVER

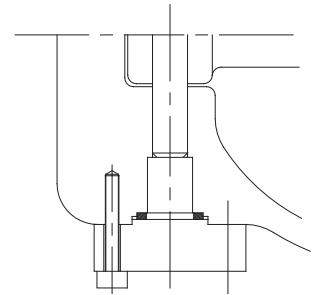
SW/CH CLASS 2500



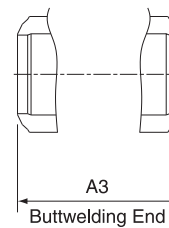
8" & Under



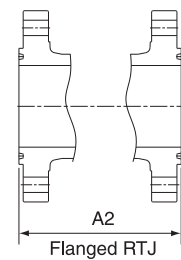
8" & Larger



10" & Larger



Buttwelding End



Flanged RTJ

VALVE SIZE	in	2	2.5	3	4	6	8	10	12	14	16	
	mm	50	65	80	100	150	200	250	300	350	400	
A1 & A3	in	17.8	20.0	22.8	26.5	36.0	40.2	50.0	56.0	62.0	68.0	
	mm	451	508	578	673	914	1022	1270	1422	1574.8	1727.2	
A2	in	17.9	20.2	23.0	26.9	36.5	40.9	50.9	56.9	-	-	
	mm	454	514	584	683	927	1038	1292	1444	-	-	
H	in	16.4	16.5	17.4	21.3	28.9	28.4	33.5	39.4	47.2	51.1	
	mm	416	419	441	541	733	722	851	1000	1200	1299	
WEIGHT	RF	lb	330.7	529.1	771.6	1433.0	3196.7	5621.7	8708.1	12566.2	-	-
		kg	150	240	350	650	1450	2550	3950	5700	-	-
	BW	lb	264.6	429.9	617.3	1190.5	2645.5	4850.1	6944.5	10030.9	13668.5	17857.2
		kg	120	195	280	540	1200	2200	3150	4550	6200	8100