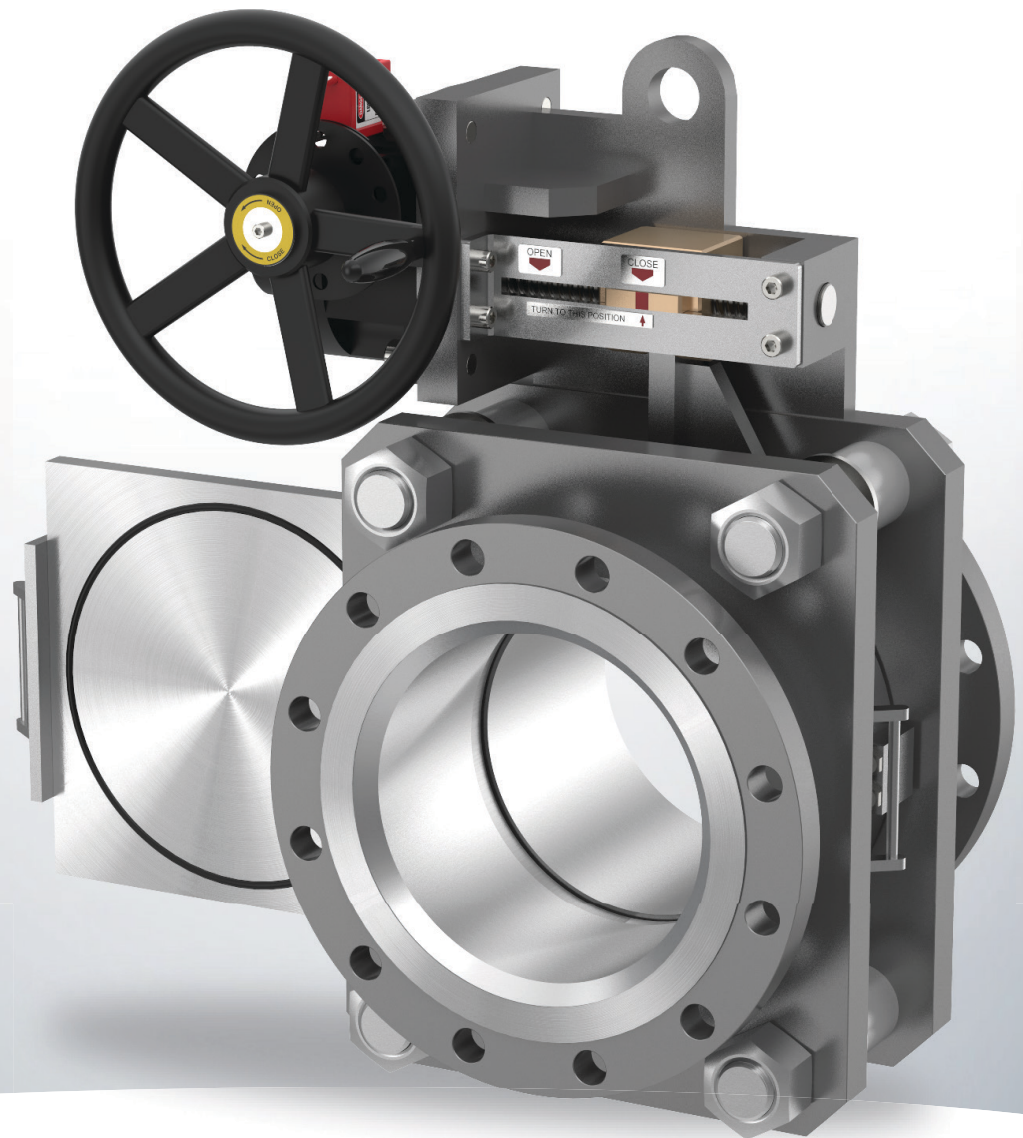


SLIDING TYPE

Instruction Catalogue



GENERAL INFORMATION

INSTRUCTION & FEATURES

One operator turns hand-wheel and unique gear-set mechanism makes a gap without pipe spreading.
By Sliding Blind plate manually, Open/Close Blind position is changed.
All blinding process completes within 3 minutes safely and easily.
Sturdy and simple design shall make high reliability with the most advanced technology and durability.

TECHNICAL SPECIFICATIONS

NOMINAL DIAMETER

NPS 1/2 (DN15) - NPS100 (DN2500)

PRESSURE RATING

ASME Class 150 to Class 1500

Other pressure classes up to ASME 2500

Available upon request

FUNCTION

Gas & Liquid Perfect Isolation(Zero Leakage)

TEMPERATURE RANGE

Standard Design : -20°C ~ +200°C

High Temp. Design : +200°C ~ +816°C

Cryogenic Design : -196°C

MATERIALS

BODY : Carbon Steel, Stainless Steel, Special Material (Duplex, Hastelloy, Monel, Inconel etc.)

BLIND : Stainless Steel, Special Material (Duplex, Hastelloy, Monel, Inconel etc.)

MOVING PARTS & SEALING SURFACE are Anti-corrosion Materials

OPERATION METHOD

Manual Operation

Electric, Pneumatic or Hydraulic Operation

APPLICATIONS

• REFINERY

- > Ethylene Furnace
- > De coking line
- > Steam & Vapor line
- > FCCU Fractionator isolation
(overhead & bottom line)
- > Catalyst service
- > Flare gas line

• CHEMICAL PLANT

- > Reactor Blowdown
- > Chemical Cleaning isolation
- > Mixing lines
- > Regeneration gas line
- > Filtration system
- > Loading station
- > Transfer line

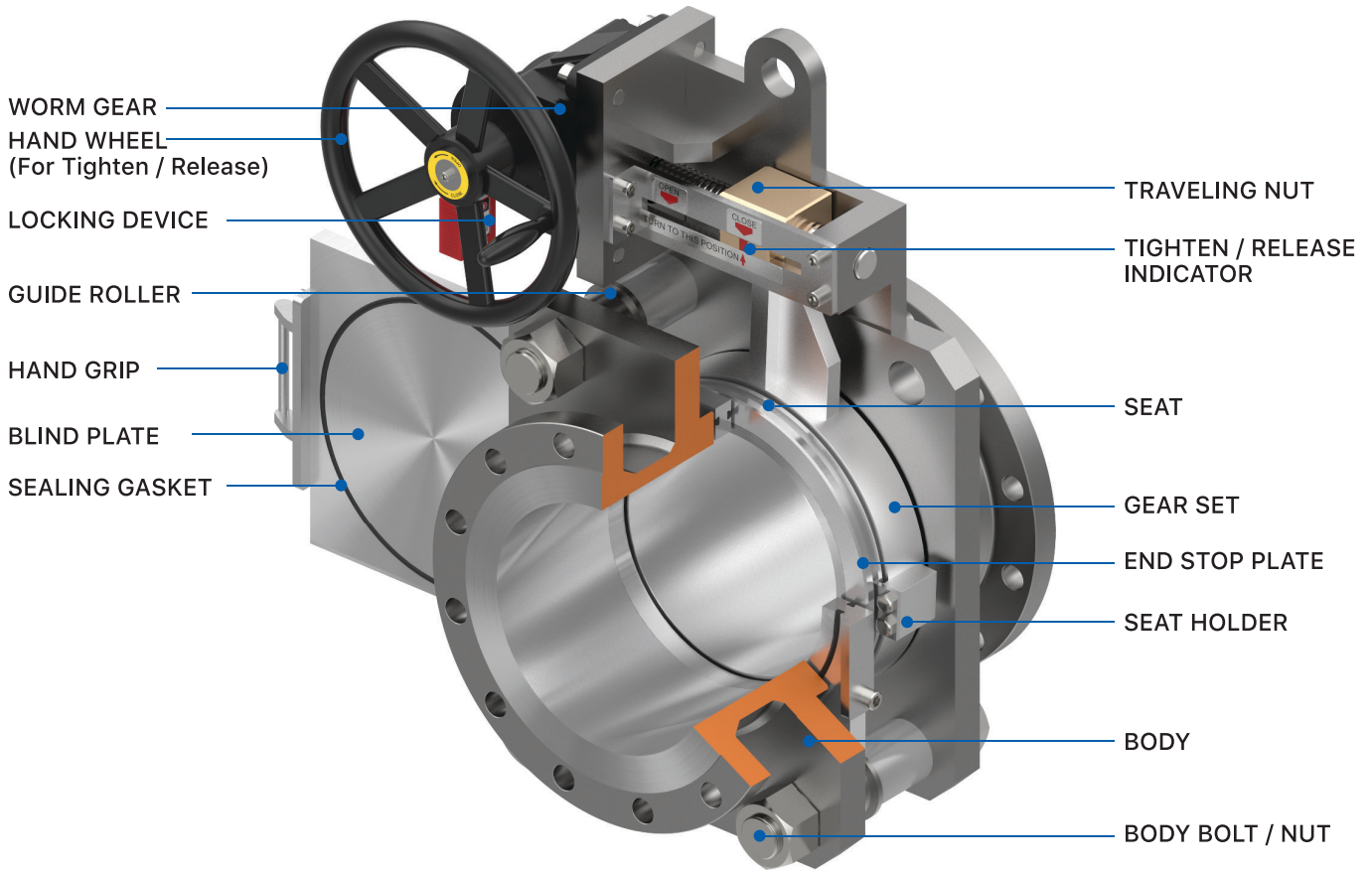
• OFFSHORE

- > FPSO
- > LNG ship
- > Shipboard lines
- > Vessel inlet
- > Inert Gas system

• STEEL

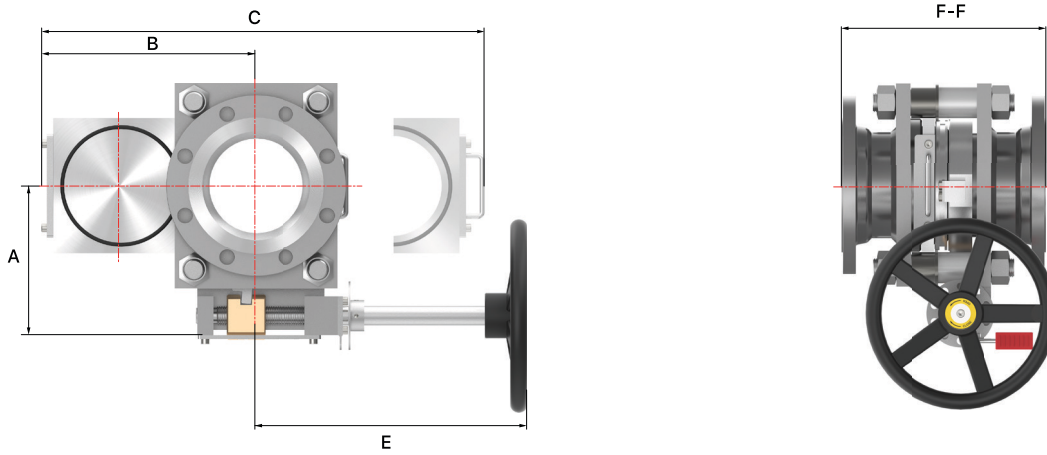
- > Coke Oven Gas
- > Blast Furnace Gas

Part & Description



Part name	CS Body & SS Slide	SS Body & Slide	Optional Material
FLANGE	Carbon Steel	Stainless Steel	Martensitic or Ferritic Stainless steel Duplex or Super Duplex Low alloy steel Nickel & Nickel base alloy Nickel-Chromium-Iron alloy Chromium-Molybdenum alloy
PIPE	Carbon Steel	Stainless Steel	
STREAM PLATE	Carbon Steel	Stainless Steel	
BLIND PLATE	Stainless Steel	Stainless Steel	
SEAT	Stainless Steel	Stainless Steel	
GEAR SET	Stainless Steel	Stainless Steel	
SCREW SHAFT	Stainless Steel	Stainless Steel	
STUD BOLT	SA193-B7	SA193-B8	for H2S Service / for Low Temp.
HEX.NUT	SA194-2H	SA194-8	
BLIND SEAL RING	Selection	Selection	Selection
SEAT SEAL RING	Selection	Selection	Selection
WIPER	PTFE / GRAPHITE	PTFE / GRAPHITE	PTFE / GRAPHITE
LOCKING DEVICE	P	P	-

Dimensions

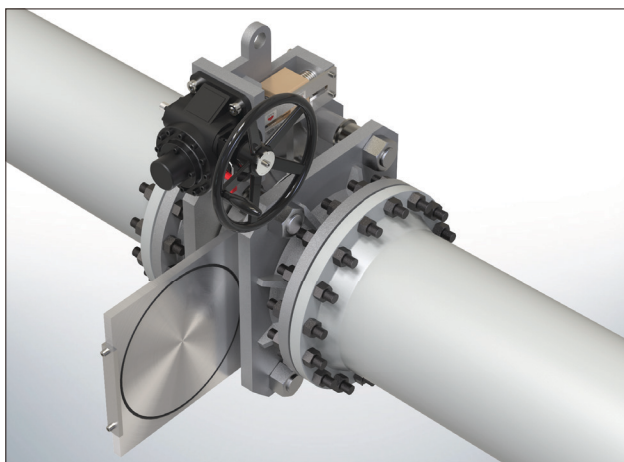


Class 150

Size		F-F	A	B	C	E	kg
inch	DN						Weight(NET)
1	25	190	100.8	117.6	235.1	175.5	10
1-1/2	40	210	115.6	142.5	285.1	200	16
2	50	230	134.5	166	332	234	27
2-1/2	65	240	146.5	185	370	260	30
3	80	270	168.5	211	442.4	307.5	35
4	100	280	201	244	508.4	340	49
6	150	320	245	334	688	425	87
8	200	340	282	415.5	857	508	150
10	250	370	362	525	1024.5	345	215
12	300	410	397	611	1190	355.7	312
14	350	450	453.6	685	1370	400.2	420
16	400	520	518	759.5	1519	436.5	600
18	450	540	575	856.5	1713.1	526.2	810
20	500	660	619	940	1880	527	975
24	600	720	705	1104	2208	561	1500

Class 300

Size		F-F	A	B	C	E	kg
inch	DN						Weight(NET)
1	25	200	100.8	117.6	235.1	174.5	12
1-1/2	40	240	127	144	288.1	210	18
2	50	245	145.5	166	332	234	32
2-1/2	65	260	181.1	140	362.2	267.4	33
3	80	320	181	211	442.4	300	58
4	100	360	209.5	241	502	325	65
6	150	410	307	354	687	330.5	131
8	200	420	334.6	443	853	388.4	200
10	250	510	402	525.5	1025	356	310
12	300	570	468	618.5	1205	396	400
14	350	640	498	691.5	1383	410.6	540
16	400	720	594	789.7	1579.5	531.5	690
18	450	730	644	885	1770	545.7	950
20	500	780	595	921.1	1842.2	496.5	1176
24	600	850	705	1095.6	2191.3	551.7	2084

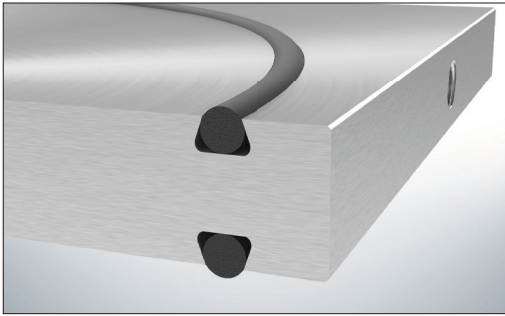


Operating Instruction



- 1). Before turning the handwheel to change the blind plate position, internal pressure of the valve must be drained and be sure no pressure(Zero).
- 2). Unlock locking device for turn to handwheel
- 3). To change the blind plate position, turn the handwheel clockwise until indicator reaches to "Open" mark.
- 4). When indicator is on "open" mark, change the blind plate position to open or close.
- 5). After change the blind plate position, turn the handwheel counter-clockwise until indicator reaches to "Close" mark to tighten the seat.
- 6). Lock locking device for can't use authorized person

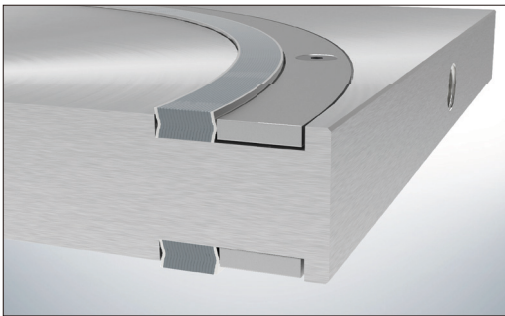
Sealing Material Guide



ELASTOMER O-RING

FKM
FFKM
FVMQ
Viton®
EPDM
NBR

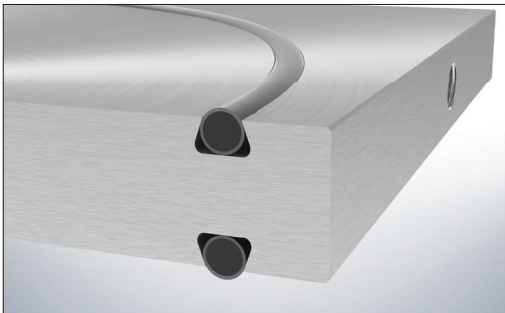
International Standard
Long durability
Excellent gas tightness
Easy to purchase
Selection depend on chemical resistance



SPIRAL WOUND GASKET

Graphite mold
Spiral wound

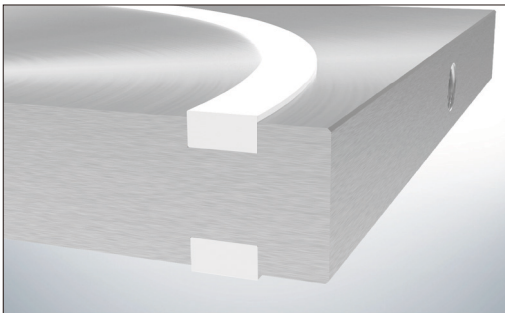
High temperature service
Cryogenic service
Excellent chemical resistance
Easy to purchase



TEFLON ENCAPSULATED O-RING

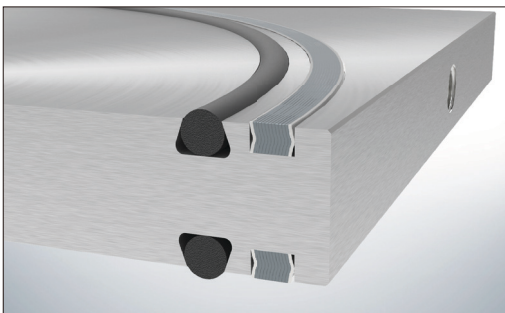
PFAV / FEPV / PFAS

International Standard
Excellent chemical resistance with teflon tube
Retaining elasticity with core o-ring
Excellent gas tightness
Long durability
Easy to purchase



PTFE GASKET

Excellent chemical resistance
Excellent tightness
Long durability
Easy to purchase



FIRE SAFE GASKET

Spiral wound
O-ring

Primary sealing with elastic o-ring
Secondary sealing with spiral wound gasket
Excellent gas tightness
Long durability
Easy to purchase

