

Sealing Fitting & Drain EFZ, EFV, EFVH, EFVD



❖ Attention for Marking Seal

- Do not splice any conductors in the sealing fittings regardless the characteristics of the sealing compound.
- Make the sealing dam with the care using the asbestos packing supplied with the sealing compound. If the poured compound leaks into the conduit, the quality of seal would become insufficient, and it would be a cause of trouble.
- The sealing compound should be mixed with water a little harder. Over addition of solution or water may weaken the seal.
- The sealing compound shall be poured so as not to leave large bubbles in the seal. The bubbles are come out by insufficient fluidity and wrong pouring manner. For removing bubbles, it is effective to pat the sealing fitting gently just after the filling.
- It is rather difficult to achieve good seal in horizontal conduit run than in the vertical. Therefore, when the any angle type sealing fitting is used in horizontal conduit run, set the cover with the filling opening at as high position as possible, and pour the sealing compound full.

❖ Compliance & Certification

- IEC 60079-0, 1
- ANSI/UL 886
- UL Listed File No. E 143517 (EFV, EFVH Series)
- Certified by UL (Underwriters Laboratories Inc.), KOSHA (Korea Occupational Safety & Health Agency), KGS (Korea Gas Safety Corporation), and the others.

❖ Standard Finish

- Hot Dip. Galvanized with stove enamelled silver white
- If you want another color, contact us please.

❖ Features

EFV, EFVH Series Sealing Fittings are

- minimum turning radius.
- large openings with threaded closures to provide easy access to conduit hubs for making dams.
- integral bushings in conduit hubs to protect conductor insulation from damage.
- taper-tapped hubs to insure ground continuity.

EFZ Any Angle Type Sealing Fittings are

- can be used for sealing horizontal, vertical and other sloped conduit runs.
- have large cover openings which provide easy access to both hubs for making sealing dam and pouring sealing compound.

EFVD Series Drain Sealing Fittings are

- drain to Provide continuous, automatic drainage of condensate.
- removable male nipple supplied when male and female style is ordered.

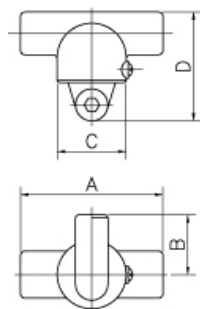
❖ Application

Sealing Fittings are used in;

- restrict the passage of gases, vapors or flames from one portion of the electrical installation to another at atmospheric pressure and normal ambient temperatures.
- limit explosions to the sealed off enclosure.
- prevent precompression or "pressure piling" on conduit systems.
- drain sealing fittings are installed in vertical conduit runs and at low points in conduit systems to prevent accumulation of condensate above seal.



◎ EFZ Sealing Fitting



❖ Type of Explosion-proof Flameproof (Ex d IIC)

Hub Size	Cat. No.	Dimen. (mm)			
		A	B	C	D
1/2" 16C	EFZ 300	100	42	48	83
3/4" 22C	EFZ 301	105	42	48	88
1" 28C	EFZ 302	110	42	48	98
1-1/4" 36C	EFZ 303	125	58	67	113
1-1/2" 42C	EFZ 304	130	58	67	119
2" 54C	EFZ 305	180	58	67	131
2-1/2" 70C	EFZ 306	200	77	84	156
3" 82C	EFZ 307	215	77	84	170
3-1/2" 92C	EFZ 308	235	90	110	185
4" 104C	EFZ 309	245	90	110	210

❖ Standard Materials

- Cast Iron

❖ Installation Type

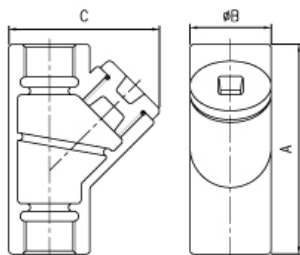
- Any Angle Type

◎ EFV Sealing Fitting



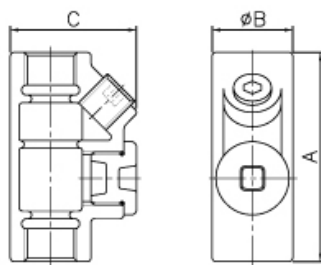
❖ Type of Explosion-proof Flameproof (Ex d IIC) Class I Group C,D Class II Group E,F,G

❖ Flameproof EFV Sealing Fittings, Vertical type



Hub Size	Cat. No.		Dimen. (mm)		
	Female	Male & Female	A	B	C
1/2" 16C	EFV 100	EFV 100M	108	32	70
3/4" 22C	EFV 101	EFV 101M	114	36	73
1" 28C	EFV 102	EFV 102M	128	43	84
1-1/4" 36C	EFV 103	EFV 103M	150	53	104
1-1/2" 42C	EFV 104	EFV 104M	170	60	116
2" 54C	EFV 105	EFV 105M	200	74	141
2-1/2" 70C	EFV 106	EFV 106M	220	90	167
3" 82C	EFV 107	EFV 107M	250	106	201
3-1/2" 92C	EFV 108	EFV 108M	-	-	-
4" 104C	EFV 109	EFV 109M	286	132	237

❖ Flameproof EFVH Sealing Fittings, Horizontal type



Hub Size	Cat. No.		Dimen. (mm)		
	Female	Male & Female	A	B	C
1/2" 16C	EFVH 100	EFVH 100M	90	32	46
3/4" 22C	EFVH 101	EFVH 101M	110	36	60
1" 28C	EFVH 102	EFVH 102M	120	43	70
1-1/4" 36C	EFVH 103	EFVH 103M	130	53	80
1-1/2" 42C	EFVH 104	EFVH 104M	144	60	88
2" 54C	EFVH 105	EFVH 105M	165	74	103
2-1/2" 70C	EFVH 106	EFVH 106M	200	90	116
3" 82C	EFVH 107	EFVH 107M	215	106	138
3-1/2" 92C	EFVH 108	EFVH 108M	-	-	-
4" 104C	EFVH 109	EFVH 109M	245	132	160

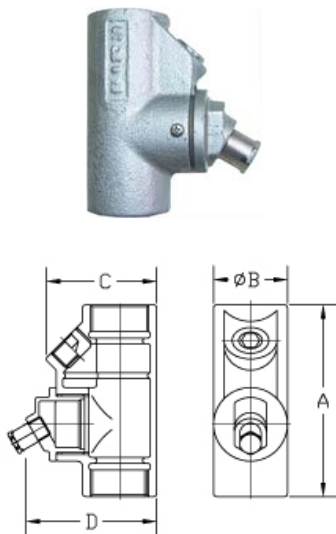
❖ Standard Materials

- Cast Iron

❖ Finishes

- Hot Dip Galvanize with stove enamelled silver

◎ EFVD Drain Sealing Fitting



❖ Type of Explosion-proof
Flameproof (Ex d IIC)

Hub Size	Cat. No.		Dimen. (mm)			
	Female	Male & Female	A	B	C	D
1/2" 16C	EFVD 816	EFVD 816M	83	32	62	57
3/4" 22C	EFVD 822	EFVD 822M	94	36	66	66
1" 28C	EFVD 828	EFVD 828M	110	43	75	78
1-1/4" 36C	EFVD 836	EFVD 836M	130	53	80	101
1-1/2" 42C	EFVD 842	EFVD 842M	144	60	88	105
2" 54C	EFVD 854	EFVD 854M	165	74	103	125
2-1/2" 70C	EFVD 870	EFVD 870M	200	90	116	139
3" 82C	EFVD 882	EFVD 882M	215	106	138	163
3-1/2" 92C	EFVD 892	EFVD 892M	—	—	—	—
4" 104C	EFVD 8104	EFVD 8104M	245	132	160	189

❖ Standard Materials

- Body : Cast Iron
- Drain : Stainless steel
- Removable Nipple : Steel

◎ EDF Drain Sealing Fitting



❖ Type of Explosion-proof
Flameproof (Ex d IIC)

Hub Size	Cat. No.	Dimen. (mm)			
		A	B	C	D
1/2" 16C	EDF 900	115	85	85	70
3/4" 22C	EDF 901	115	90	85	70
1" 28C	EDF 902	135	105	90	80
1-1/4" 36C	EDF 903	135	115	90	80
1-1/2" 42C	EDF 904	150	120	100	95
2" 54C	EDF 905	170	130	100	95
2-1/2" 70C	EDF 906	200	140	100	95
3" 82C	EDF 907	215	153	100	95
3-1/2" 92C	EDF 908	235	168	100	95
4" 104C	EDF 909	245	181	100	95

❖ Standard Materials

- Body : Cast Iron
- Drain : Stainless steel
- Removable Nipple : Steel

❖ Sealing Compound Required (g)

Hub Size	1/2" 16C	3/4" 22C	1" 28C	1-1/4" 36C	1-1/2" 42C	2" 54C	2-1/2" 70C	3" 82C	3-1/2" 92C	4" 104C
EDF	120	140	210	260	300	430	500	600	800	1,000
EFZ	90	110	130	220	270	440	800	1,050	1,600	2,000