

TYPE
"_"

REV.NO.	DATE	DESCRIPTION	REV'D BY	CHE'D BY	APP'D BY
△					
△					
△					

SELECTION TABLE

ITEM NO.	LAMP	LAMP SIZE	Q'TY	SUPPLY VOLTAGE	FREQUENCY		HUB SCHEDULE	THREAD	LOCATION	
		<input type="checkbox"/> 100W	SET		<input type="checkbox"/> DC110V <input type="checkbox"/> AC220V	<input type="checkbox"/> NPT <input type="checkbox"/> PF <input type="checkbox"/> MM <input type="checkbox"/>		<input type="checkbox"/> 50Hz		
	INCANDESCENT LAMP	<input type="checkbox"/> 200W	SET	<input type="checkbox"/> AC110V <input type="checkbox"/> AC240V	<input type="checkbox"/> 60Hz		SIZE	<input type="checkbox"/> 1/2" <input type="checkbox"/> 3/4" <input type="checkbox"/> M <input type="checkbox"/>		
									 <input type="checkbox"/> 1-2 <input type="checkbox"/> 1-3 <input type="checkbox"/> 1-2-3 <input type="checkbox"/> 1-2-3-4	
									<input type="checkbox"/> W/2-BLIND PLUGS	<input type="checkbox"/> NONE

NOTE

1.

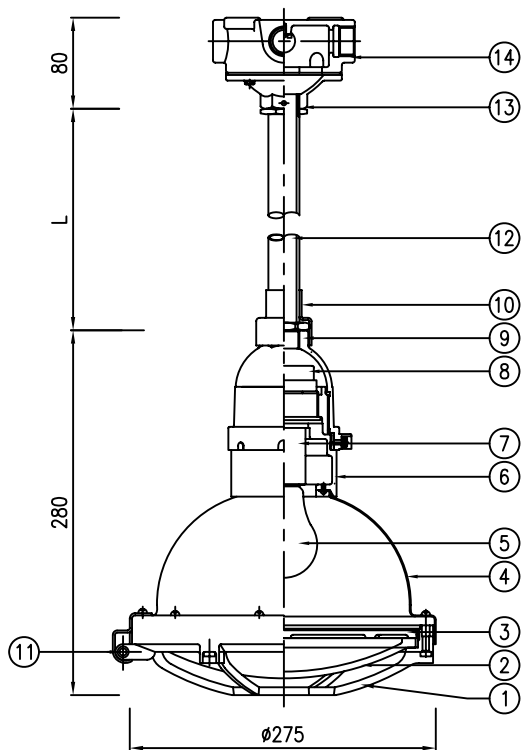
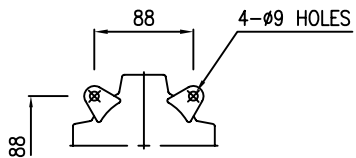
NO	PARTS	MATERIAL	REMARK
14	MOUNTING BOX	CAST IRON	
13	FLANGE	DIE CASTING ALUMINIUM	
12	NIPPLE	STEEL	
11	HINGE PIN	STAINLESS STEEL ROD	SUS304
10	WEATHERPROOF GAP	SILICONE RUBBER	
9	HOOD	DIE CASTING ALUMINIUM	
8	LAMP HOLDER MTG. PLATE	PHENOL RESIN	
7	LAMP HOLDER	PORCELAIN W/MEDIUM SOCKET	E26
6	LAMP HOLDER HOUSING	CAST ALUMINIUM ALLOY	
5	LAMP	INCANDESCENT LAMP	
4	BODY	HIGH GRADE ALUMINIUM SHEET	
3	LOCK RING	DIE CASTING ALUMINIUM	
2	GLOBE	HEAT RESISTANT HARD GLASS	
1	GUARD	DIE CASTING ALUMINIUM	

SCALE	N.S	APPROVED BY	
UNIT	mm	CHECKED BY	
DATE		DRAWN BY	

NB 南北電氣株式會社
NAMBUK ELECTRIC CO.,LTD

TITLE	IL LTG. FIXTURE (CEILING MTG. TYPE)		APPLICATION AREA	
CAT NO.	SYL SERIES		Ex e II T1	
COLOR FINISHING	MUNSELL NO. 7.5BG 6/1.5		DRAWING NO.	N B - E L H - D 1 - A 0 1

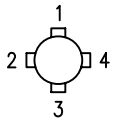
* LENGTH(L) ORDER MADE.



TYPE
"_"

REV.NO.	DATE	DESCRIPTION	REV'D BY	CHE'D BY	APP'D BY
△					
△					
△					

SELECTION TABLE

ITEM NO.	LAMP	LAMP SIZE	Q'TY	SUPPLY VOLTAGE	FREQUENCY		HUB SCHEDULE
					<input type="checkbox"/> DC110V	<input type="checkbox"/> AC220V	
	INCANDESCENT LAMP	<input type="checkbox"/> 100W	SET		<input type="checkbox"/> AC110V	<input type="checkbox"/> AC240V	THREAD <input type="checkbox"/> NPT <input type="checkbox"/> PF <input type="checkbox"/> MM <input type="checkbox"/> SIZE <input type="checkbox"/> 1/2" <input type="checkbox"/> 3/4" <input type="checkbox"/> M <input type="checkbox"/> LOCATION  <input type="checkbox"/> 1-2 <input type="checkbox"/> 1-3 <input type="checkbox"/> 1-2-3 <input type="checkbox"/> 1-2-3-4 <input type="checkbox"/> W/2-BLIND PLUGS <input type="checkbox"/> NONE
		<input type="checkbox"/> 200W	SET				

NOTE

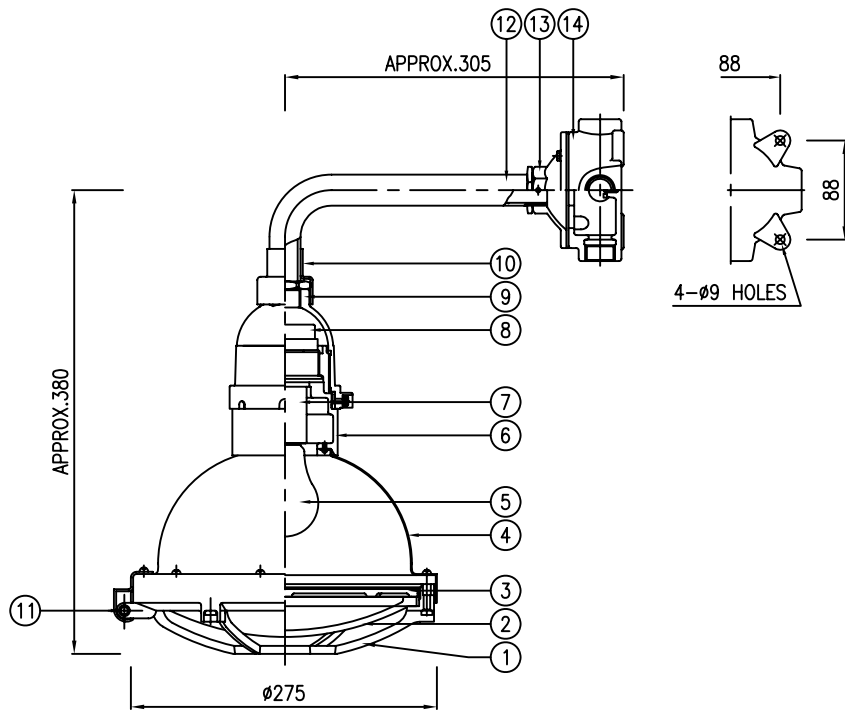
1.

NO	PARTS	MATERIAL	REMARK
14	MOUNTING BOX	CAST IRON	
13	FLANGE	DIE CASTING ALUMINIUM	
12	SUSPENSION STEM	RIGID STEEL PIPE	
11	HINGE PIN	STAINLESS STEEL ROD	SUS304
10	WEATHERPROOF GAP	SLILCONE RUBBER	
9	HOOD	DIE CASTING ALUMINIUM	
8	LAMP HOLDER MTG. PLATE	PHENOL RESIN	
7	LAMP HOLDER	PORCELAIN W/MEDIUM SOCKET	E26
6	LAMP HOLDER HOUSING	CAST ALUMINIUM ALLOY	
5	LAMP	INCANDESCENT LAMP	
4	BODY	HIGH GRADE ALUMINIUM SHEET	
3	LOCK RING	DIE CASTING ALUMINIUM	
2	GLOBE	HEAT RESISTANT HARD GLASS	
1	GUARD	DIE CASTING ALUMINIUM	

SCALE	N.S	APPROVED BY	
UNIT	mm	CHECKED BY	
DATE		DRAWN BY	

NB 南北電氣株式會社
NAMBUK ELECTRIC CO.,LTD

TITLE	IL LTG. FIXTURE (PENDANT MTG. TYPE)		APPLICATION AREA	
CAT NO.	SYL SERIES		Ex e II T1	
COLOR FINISHING	MUNSELL NO. 7.5BG 6/1.5		DRAWING NO.	N B - E L H - D 1 - A 0 1



TYPE
"_"

REV.NO.	DATE	DESCRIPTION	REV'D BY	CHE'D BY	APP'D BY
△					
△					
△					

SELECTION TABLE

ITEM NO.	LAMP	LAMP SIZE	Q'TY	SUPPLY VOLTAGE	FREQUENCY		HUB SCHEDULE	THREAD	LOCATION			
		<input type="checkbox"/> 100W	SET		<input type="checkbox"/> DC110V <input type="checkbox"/> AC220V	<input type="checkbox"/> NPT <input type="checkbox"/> PF <input type="checkbox"/> MM <input type="checkbox"/>		<input type="checkbox"/> 50Hz		SIZE	<input type="checkbox"/> 1/2" <input type="checkbox"/> 3/4" <input type="checkbox"/> M <input type="checkbox"/>	<input type="checkbox"/> 1-2
<input type="checkbox"/> 200W	SET	<input type="checkbox"/> AC110V <input type="checkbox"/> AC240V		<input type="checkbox"/> W/2-BLIND PLUGS	<input type="checkbox"/> NONE							

NOTE

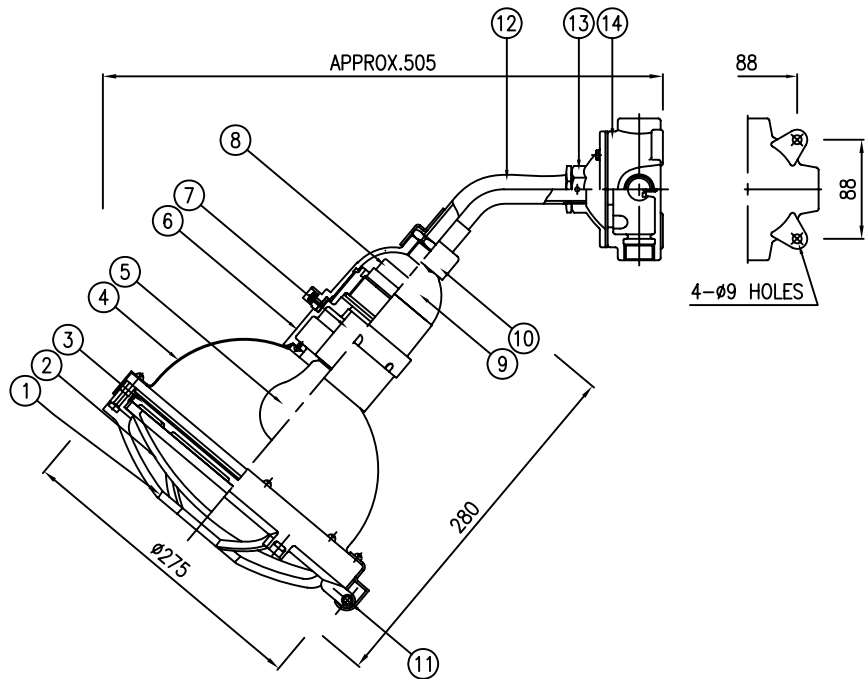
1.

NO	PARTS	MATERIAL	REMARK
14	MOUNTING BOX	CAST IRON	
13	FLANGE	DIE CASTING ALUMINIUM	
12	SUSPENSION STEM	RIGID STEEL PIPE	
11	HINGE PIN	STAINLESS STEEL ROD	SUS304
10	WEATHERPROOF GAP	SILICONE RUBBER	
9	HOOD	DIE CASTING ALUMINIUM	
8	LAMP HOLDER MTG. PLATE	PHENOL RESIN	
7	LAMP HOLDER	PORCELAIN W/MEDIUM SOCKET	E26
6	LAMP HOLDER HOUSING	CAST ALUMINIUM ALLOY	
5	LAMP	INCANDESCENT LAMP	
4	BODY	HIGH GRADE ALUMINIUM SHEET	
3	LOCK RING	DIE CASTING ALUMINIUM	
2	GLOBE	HEAT RESISTANT HARD GLASS	
1	GUARD	DIE CASTING ALUMINIUM	

SCALE	N.S	APPROVED BY	
UNIT	mm	CHECKED BY	
DATE		DRAWN BY	

NB 南北電氣株式會社
NAMBUK ELECTRIC CO.,LTD

TITLE	IL LTG. FIXTURE (BRACKET MTG. TYPE)		APPLICATION AREA	
CAT NO.	SYL SERIES		CLASS OF PROTECTION	Ex e II T1
COLOR FINISHING	MUNSELL NO. 7.5BG 6/1.5		DRAWING NO.	N B - E L H - D 1 - A 0 1



TYPE
"_"

REV.NO.	DATE	DESCRIPTION	REV'D BY	CHE'D BY	APP'D BY
△					
△					
△					

SELECTION TABLE

ITEM NO.	LAMP	LAMP SIZE	Q'TY	SUPPLY VOLTAGE	FREQUENCY	
					<input type="checkbox"/> DC110V <input type="checkbox"/> AC220V	<input type="checkbox"/> AC110V <input type="checkbox"/> AC240V
	INCANDESCENT LAMP	<input type="checkbox"/> 100W	SET	HUB SCHEDULE	THREAD	<input type="checkbox"/> NPT <input type="checkbox"/> PF <input type="checkbox"/> MM <input type="checkbox"/>
		<input type="checkbox"/> 200W	SET		SIZE	<input type="checkbox"/> 1/2" <input type="checkbox"/> 3/4" <input type="checkbox"/> M <input type="checkbox"/>
					LOCATION	 <input type="checkbox"/> 1-2 <input type="checkbox"/> 1-3 <input type="checkbox"/> 1-2-3 <input type="checkbox"/> 1-2-3-4 <input type="checkbox"/> W/2-BLIND PLUGS <input type="checkbox"/> NONE

NOTE

1.

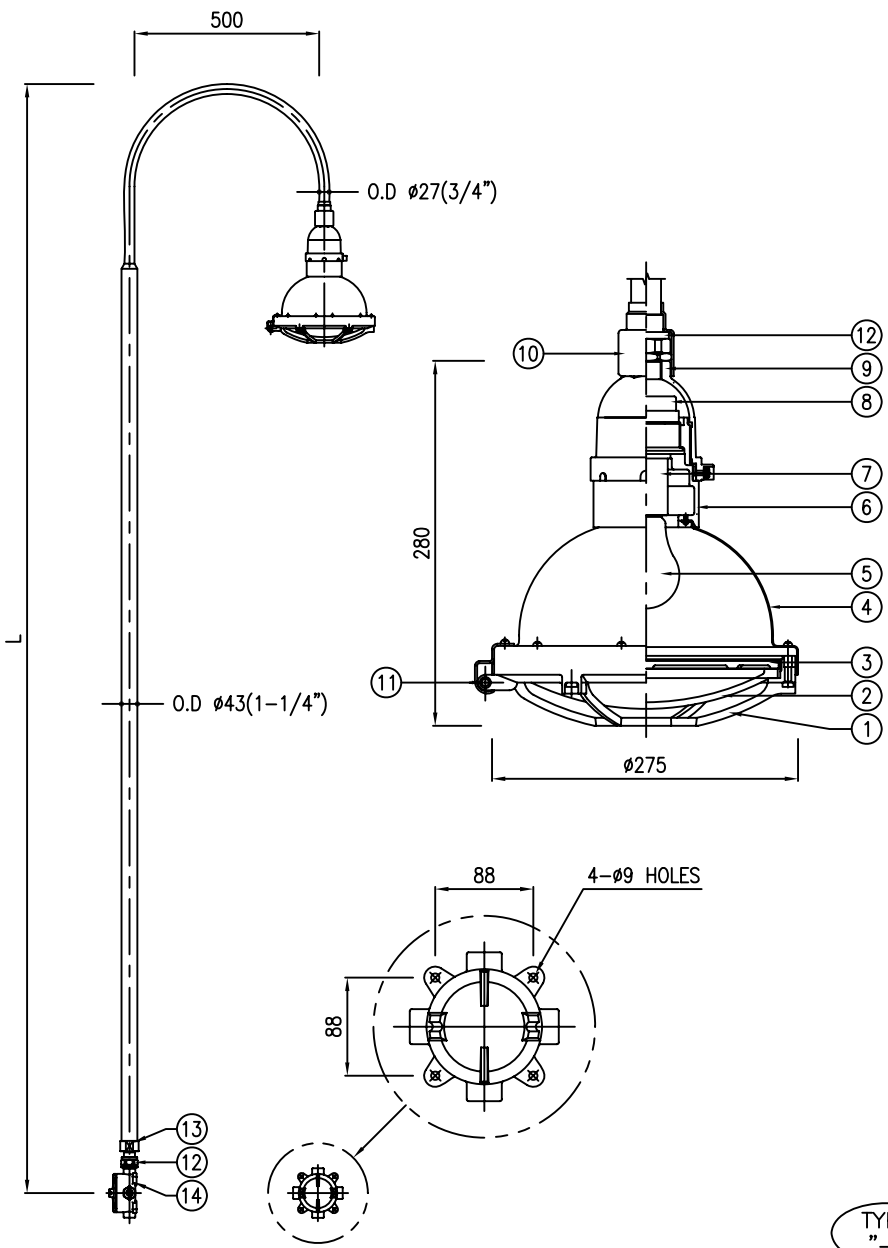
NO	PARTS	MATERIAL	REMARK
14	MOUNTING BOX	CAST IRON	
13	FLANGE	DIE CASTING ALUMINIUM	
12	SUSPENSION STEM	RIGID STEEL PIPE	
11	HINGE PIN	STAINLESS STEEL ROD	SUS304
10	WEATHERPROOF GAP	SILICONE RUBBER	
9	HOOD	DIE CASTING ALUMINIUM	
8	LAMP HOLDER MTG. PLATE	PHENOL RESIN	
7	LAMP HOLDER	PORCELAIN W/MEDIUM SOCKET	E26
6	LAMP HOLDER HOUSING	CAST ALUMINIUM ALLOY	
5	LAMP	INCANDESCENT LAMP	
4	BODY	HIGH GRADE ALUMINIUM SHEET	
3	LOCK RING	DIE CASTING ALUMINIUM	
2	GLOBE	HEAT RESISTANT HARD GLASS	
1	GUARD	DIE CASTING ALUMINIUM	

SCALE	N.S	APPROVED BY	
UNIT	mm	CHECKED BY	
DATE		DRAWN BY	

NB 南北電氣株式會社
NAMBUELECTRIC CO.,LTD

TITLE	IL LTG. FIXTURE (40° BRACKET MTG. TYPE)	APPLICATION AREA	
CAT NO.	SYL SERIES	CLASS OF PROTECTION	Ex e II T1
COLOR FINISHING	MUNSELL NO. 7.5BG 6/1.5	DRAWING NO.	N B - E L H - D 1 - A 0 1

* LENGTH(L) ORDER MADE.



REV.NO.	DATE	DESCRIPTION	REV'D BY	CHE'D BY	APP'D BY
△					
△					
△					

SELECTION TABLE

ITEM NO.	LAMP	LAMP SIZE	Q'TY	SUPPLY VOLTAGE	FREQUENCY	
					<input type="checkbox"/> DC110V <input type="checkbox"/> AC220V	<input type="checkbox"/> 50Hz <input type="checkbox"/> 60Hz
	INCANDESCENT LAMP	<input type="checkbox"/> 100W	SET		HUB SCHEDULE	
		<input type="checkbox"/> 200W	SET		THREAD	<input type="checkbox"/> NPT <input type="checkbox"/> PF <input type="checkbox"/> MM <input type="checkbox"/>
					SIZE	<input type="checkbox"/> 1/2" <input type="checkbox"/> 3/4" <input type="checkbox"/> M <input type="checkbox"/>
					LOCATION	POLE <input type="checkbox"/> P-1 <input type="checkbox"/> P-2 <input type="checkbox"/> P-1-2 <input type="checkbox"/> P-1-2-3 <input type="checkbox"/> W/2-BLIND PLUGS <input type="checkbox"/> NONE

NOTE
1.

NO	PARTS	MATERIAL	REMARK
14	MOUNTING BOX	CAST IRON	
13	SOCKET	CARBON STEEL	
12	UNION COUPLING	CARBON STEEL	
11	HINGE PIN	STAINLESS STEEL ROD	SUS304
10	WEATHERPROOF GAP	SLILCONE RUBBER	
9	HOOD	DIE CASTING ALUMINIUM	
8	LAMP HOLDER MTG. PLATE	PHENOL RESIN	
7	LAMP HOLDER	PORCELAIN W/MEDIUM SOCKET	E26
6	LAMP HOLDER HOUSING	CAST ALUMINIUM ALLOY	
5	LAMP	INCANDESCENT LAMP	
4	BODY	HIGH GRADE ALUMINIUM SHEET	
3	LOCK RING	DIE CASTING ALUMINIUM	
2	GLOBE	HEAT RESISTANT HARD GLASS	
1	GUARD	DIE CASTING ALUMINIUM	

SCALE	N.S	APPROVED BY	
UNIT	mm	CHECKED BY	
DATE		DRAWN BY	

NB 南北電氣株式會社
NAMBUK ELECTRIC CO.,LTD

TITLE	IL LTG. FIXTURE (HAND RAIL TYPE)		APPLICATION AREA
CAT NO.	SYL SERIES	CLASS OF PROTECTION	Ex e II T1
COLOR FINISHING	LTG. FIXTURE : MUNSELL NO. 7.5BG 6/1.5 POLE : HOT DIP GALVANIZED	DRAWING NO.	N B - E L H - D 1 - A 0 1