

## Software MSB

### Description

MSB (Marine Buoys Location) is a software specially dedicated to the receipt, control and monitoring buoys in real time and in completely disregarded way.

The MSB has been developed to work with the receiver MSR, which allows that the reception of the messages should be totally independent and an external connection is not needed. Another particularity of the MSR is that it has built-in GPS, for what the MSB not only will represent the positions and drifts of the buoys if not that also will see the course of the own boat.

The MSB, as alternative, allows the reception and sending of information by means of an Internet connection that the vessel has available (through Inmarsat or Iridium).

These characteristics become to the set MSR+MSB in an autonomous, quick system, easy to use, trustworthy and economic.

It includes manual and CD of installation.

### Operation

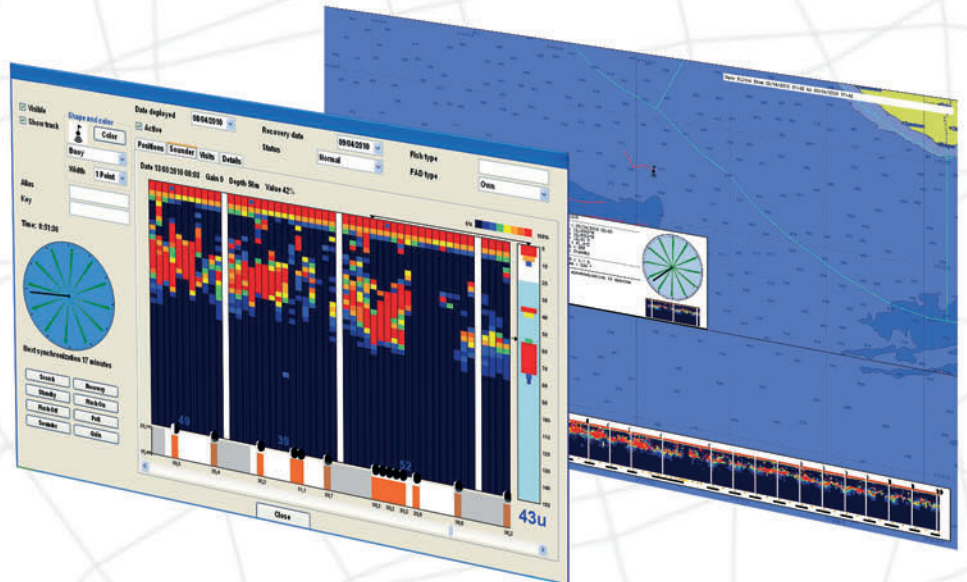
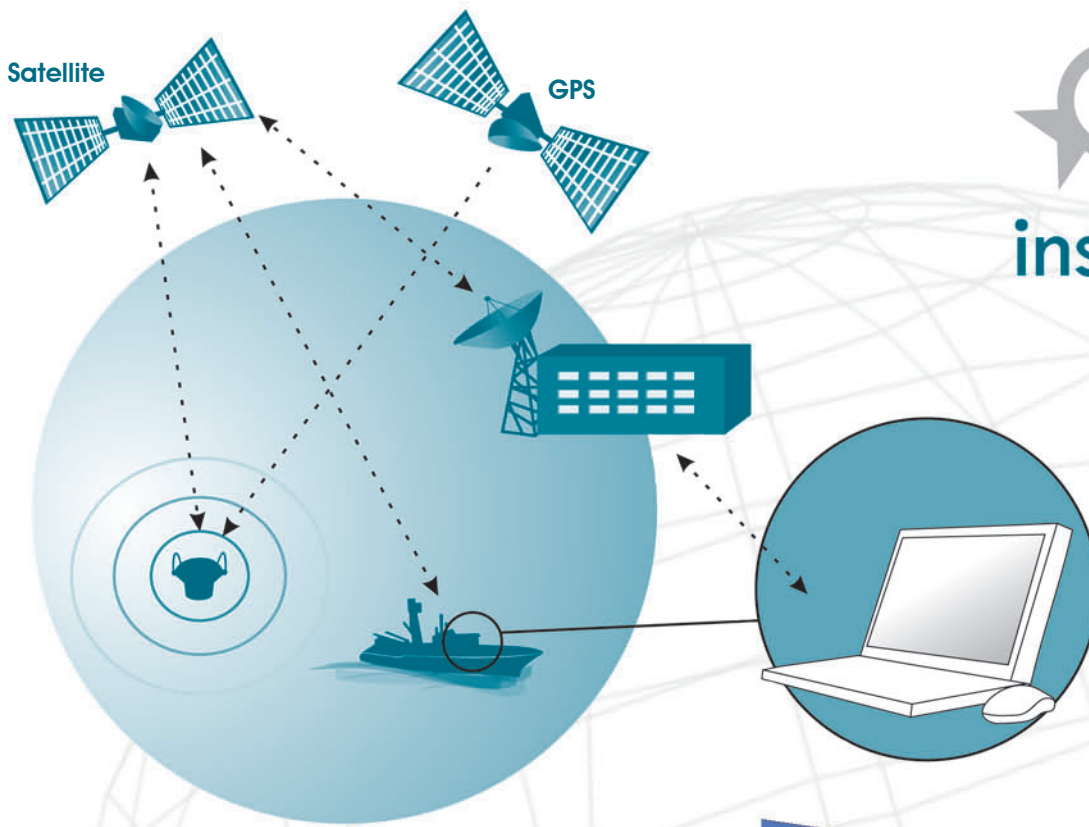
The software MSB is intuitive and easy to manage. It works connected to the MSR by means of the USB port or Serie and download in an automatic and disregarded way the positions of the buoys that the customer has under control. Also it shows on the screen the vessel position and allows the sending of remote controls to the buoys.

### Innovations and improvements in relation to the previous version

- Compatible with buoys: MID, MDP, MDS, M2D, M2i and the new ones M3i and MSi.
- Visualization of buoy M3i echo-sounder easy and intuitive.
- Compatible with software MaxSea and OrbMap. Compatible with MaxSea Time Zero too.
- Tool of distance calculation, ETA to buoy, etc.
- Buoy Mode prediction.
- Possibility see buoys in mode film.
- Management of routes, events and marks.
- Fishing diary.
- Night mode, temperature mode, waves mode and 3D navigation mode.
- Import and exportation of buoys.
- Discharges of buoys across the program.
- Compatibility with Windows 7.

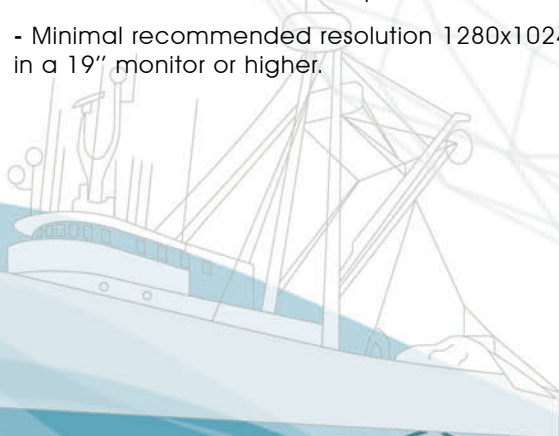
### Characteristics

- Automatic and disregarded receipt.
- Sending of telecommands.
- Reception and sending of information through MSR and Internet as alternative.
- Compatibility with Telaurus Se@Com.
- Visualization of the vessel in real time and self-centred optional.
- Vectorial marine cartography C-MAP with detailed chart of the client's fishing area.
- Antenna coverage level.
- Different types of Zoom.
- Tools of drawing and text on the chart.
- Information of Speed and Course of every buoy.
- Icon of every buoy configurable, as well as the colour and length of the traces.
- Language of the program configurable by the user.



### Technical characteristics

- Version MSB v2.3.
- MSR Antenna connected to the PC.
- Operating system Operative Windows XP, Windows Vista or Windows 7.
- Minimal processor 1.5GHz. 1GB of RAM memory and available hard disk of 2GB. It is recommended a 2.5GHz processor and 2GB of memory.
- Minimal recommended resolution 1280x1024. The visualization is recommended in a 19" monitor or higher.



General Agent