

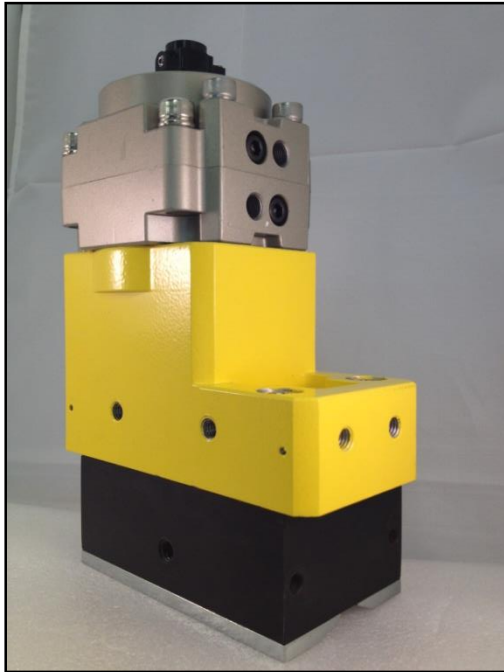


Magswitch Technology, Inc.
 8774 Yates Dr. Suite 140
 Westminster, CO 80031
 Magswitch.com.au
 303-468-0662

Magswitch PLAY50x2 MDC

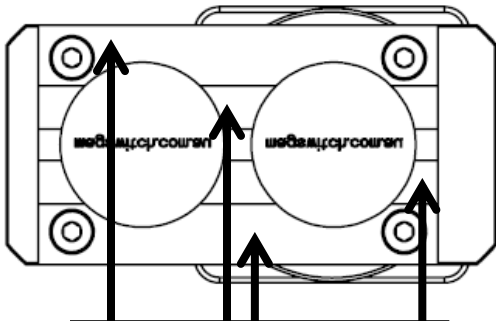
P/N: 8140405

Magswitch LAY series utilizes field interaction between individual magnets to increase depth of field and spread the attractive force over a larger footprint. This allows for greater working loads and increased control over larger work pieces. With customizable pole shoes to fit almost any application, the LAY is a great all around tool that is perfect for picking pipe and round as well as large plate steel.



WARNING!
Do Not Operate Unless In
Contact With Ferrous Target

SPECIFICATIONS	
P/N: 8140405 - MAGSWITCH PLAY50x2 MDC	
Max Breakaway*	1100 lbs/499 kg
Working Load 4:1*	275 lbs/125 kg
Full Saturation Thickness	3/8" / 9.5mm
Max Safe Shear*	200 lbs/91 kg
Minimum Thickness for De-Stack	3/8" / 9.5 mm
Min Actuation Pressure	40 psi/2.8x10 ⁵ pa
Max Actuation Pressure	145 psi/1x10 ⁶ pa
Net Weight	10.6 lbs/4.8 kg
Air Port Thread	Rc 1/8
Mounting Thread	M8x1.25
Overall Height	248.5 mm
Magnetic Pole Footprint	119x71.12 mm
Actuator Part Number	280019



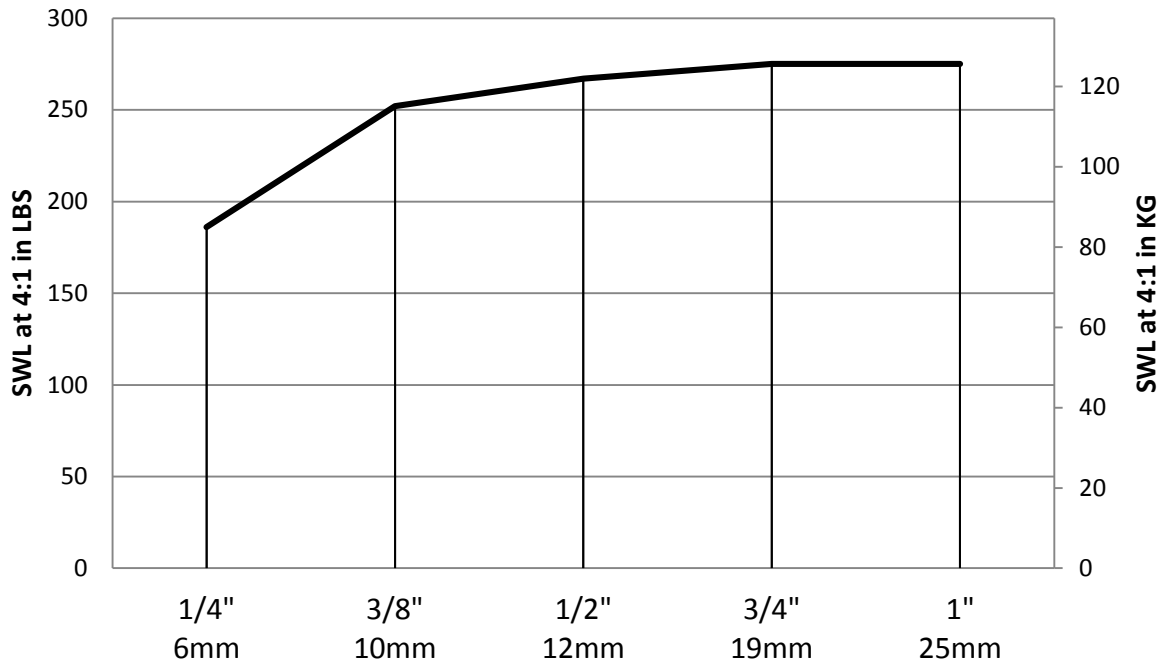
WORKING SURFACE



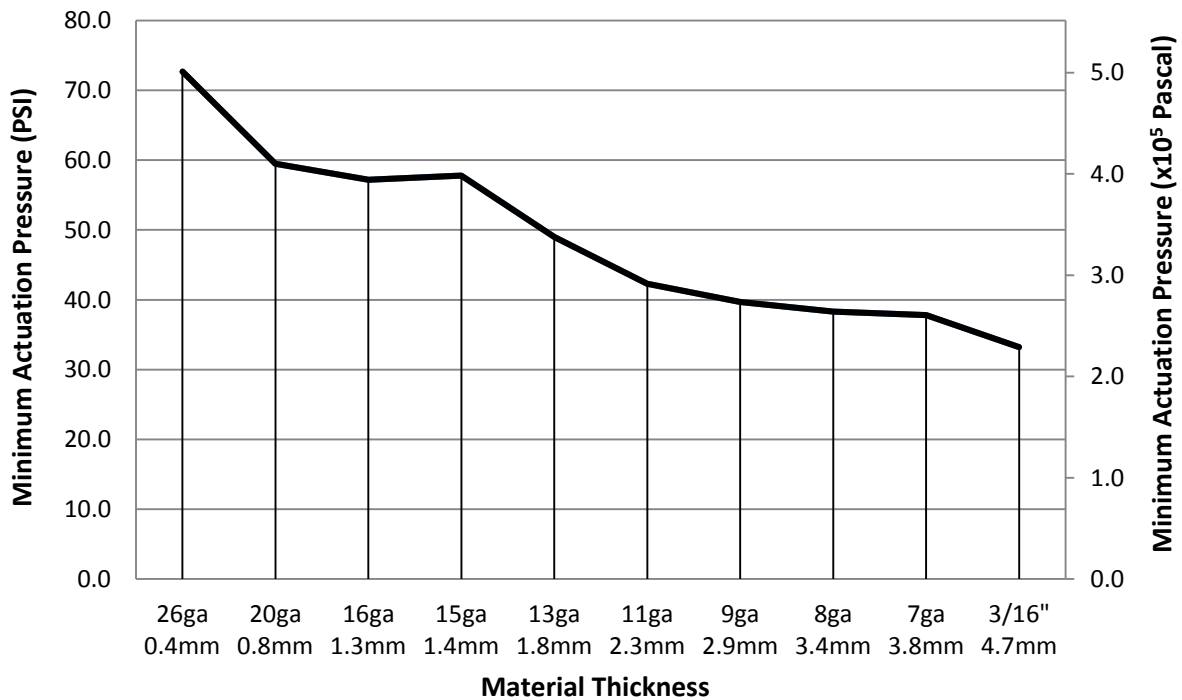
Part Number 110647
 Revision Date: January 31, 2013

* Max Breakaway determined in laboratory environment on 2" thick SAE1018 Steel with surface roughness 63 micro inches. Many factors contribute to the actual breakaway force in each application. Always test the magswitch in each application before deployment. Refer to the magswitch information booklet for more information.

Magswitch PLAY50x2 MDC Safe Working Load



Actuation Pressure Vs. Material Thickness



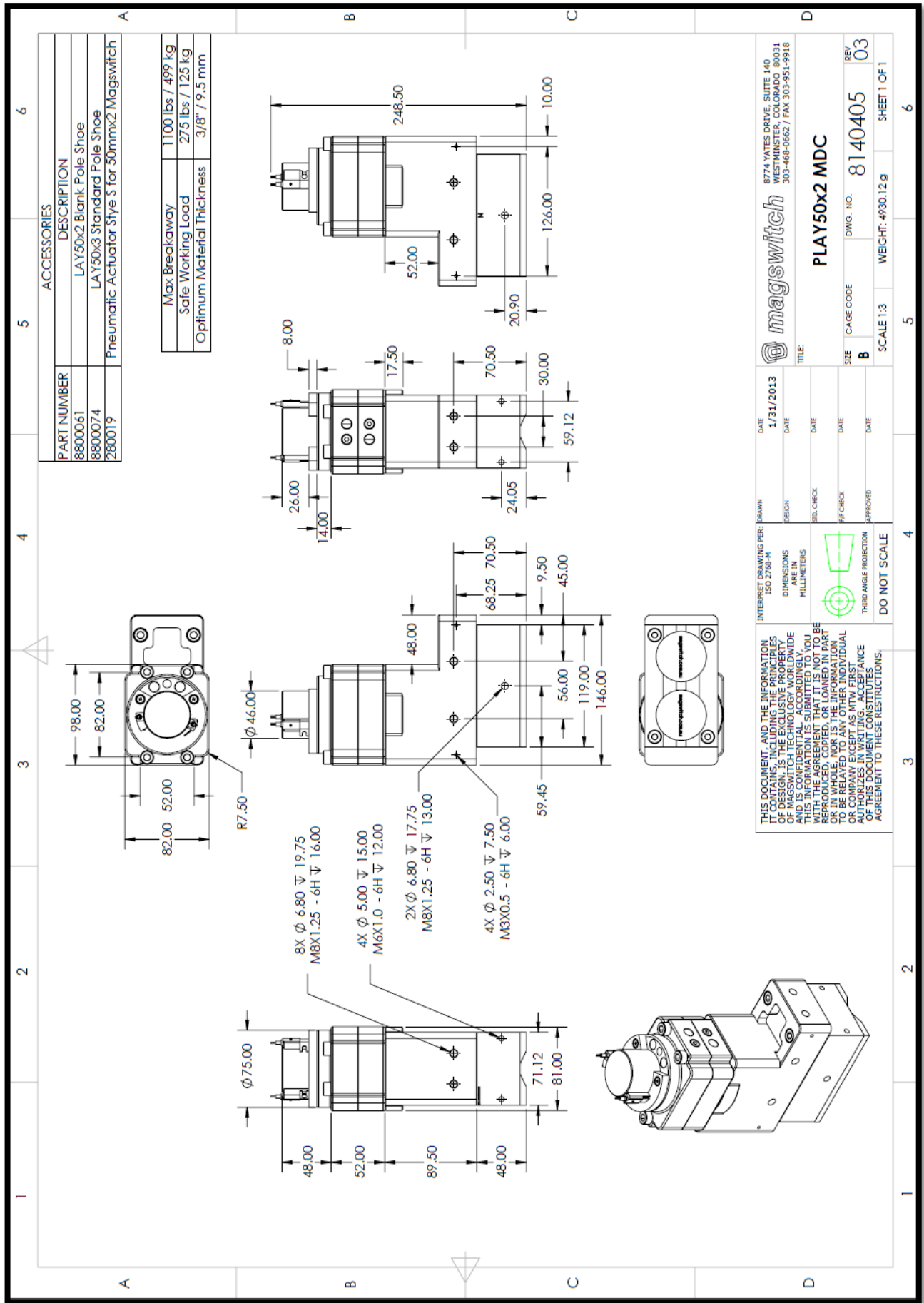
Part Number 110647
Revision Date: January 31, 2013

* Max Breakaway determined in laboratory environment on 2" thick SAE1018 Steel with surface roughness 63 micro inches. Many factors contribute to the actual breakaway force in each application. Always test the magswitch in each application before deployment. Refer to the magswitch information booklet for more information.



Part Number 110647

Revision Date: January 31, 2013



ACCESSORIES	
PART NUMBER	DESCRIPTION
8800061	LAY50x2 Blank Pole Shoe
8800074	LAY50x3 Standard Pole Shoe
2800019	Pneumatic Actuator Style S for 50mmx2 Magswitch

Max Breakaway	1100 lbs / 499 kg
Safe Working Load	275 lbs / 125 kg
Optimum Material Thickness	3/8" / 9.5 mm

DATE	1/31/2013	DATE	
DESIGN		DATE	
REV. CHECK		DATE	
RF CHECK		DATE	
APPROVED		DATE	

INTERPRET DRAWING PER: DRAWN
 ISO 2768-M
 DIMENSIONS ARE IN MILLIMETERS
 THIRD ANGLE PROJECTION
DO NOT SCALE

THIS DOCUMENT, AND THE INFORMATION IT CONTAINS, INCLUDING THE PRINCIPLES OF DESIGN, IS THE EXCLUSIVE PROPERTY OF MAGSWITCH. IT IS CONFIDENTIAL AND IS CONFIDENTIAL ACCORDINGLY WITH THE AGREEMENT THAT IT IS NOT TO BE REPRODUCED, COPIED, EITHER WHOLLY OR IN WHOLE, NOR IS THE INFORMATION OR COMPANY EXCEPT AS SET FORTH HEREIN TO BE DISCLOSED TO ANY OTHER INDIVIDUAL WITHOUT THE WRITTEN CONSENT AND AGREEMENT TO THESE RESTRICTIONS.

DATE	1/31/2013	DATE	
DESIGN		DATE	
REV. CHECK		DATE	
RF CHECK		DATE	
APPROVED		DATE	

magswitch
PLAY50x2 MDC

REV.	03
DWG. NO.	8140405
CAGE CODE	B
SCALE	1:3
WEIGHT	4930.12 g
SHEET	1 OF 1