



Magswitch Technology, Inc.
 8774 Yates Dr. Suite 140
 Westminster, CO 80031
 Magswitch.com.au
 303-468-0662

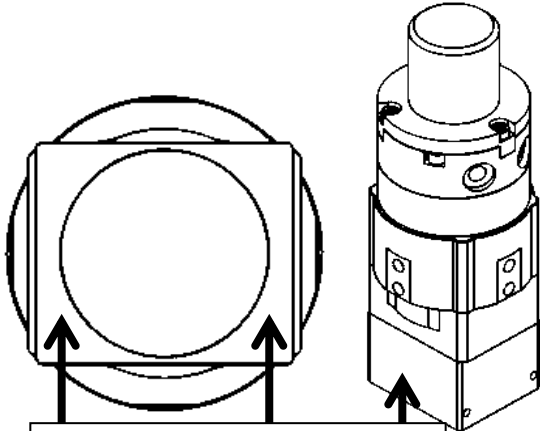
Magswitch AR30 NAAMS

P/N: 8140679

Magswitch “AR” series is explicitly designed for use with pole shoes. Pole shoes must be attached to the unit in order to maximize breakaway force and minimize residual magnetism. Each Magswitch “AR” unit comes equipped with one set of dual purpose pole shoes for flat or pipe/round stock. Simply flip the pole shoes around so the V shape is exposed for use on pipe and other rounds. The “AR” series allows complete customization of pole shapes to provide the best hold on your hard to grip parts. The “NAAMS” Mount is a universal, consistent, and precision effective way to attach these devices to robots and other mounts.

Note: You may have to design and fabricate custom pole shoes depending on your application for optimal performance.

WARNING!
**Do Not Operate Unless In
 Contact With Ferrous Target**



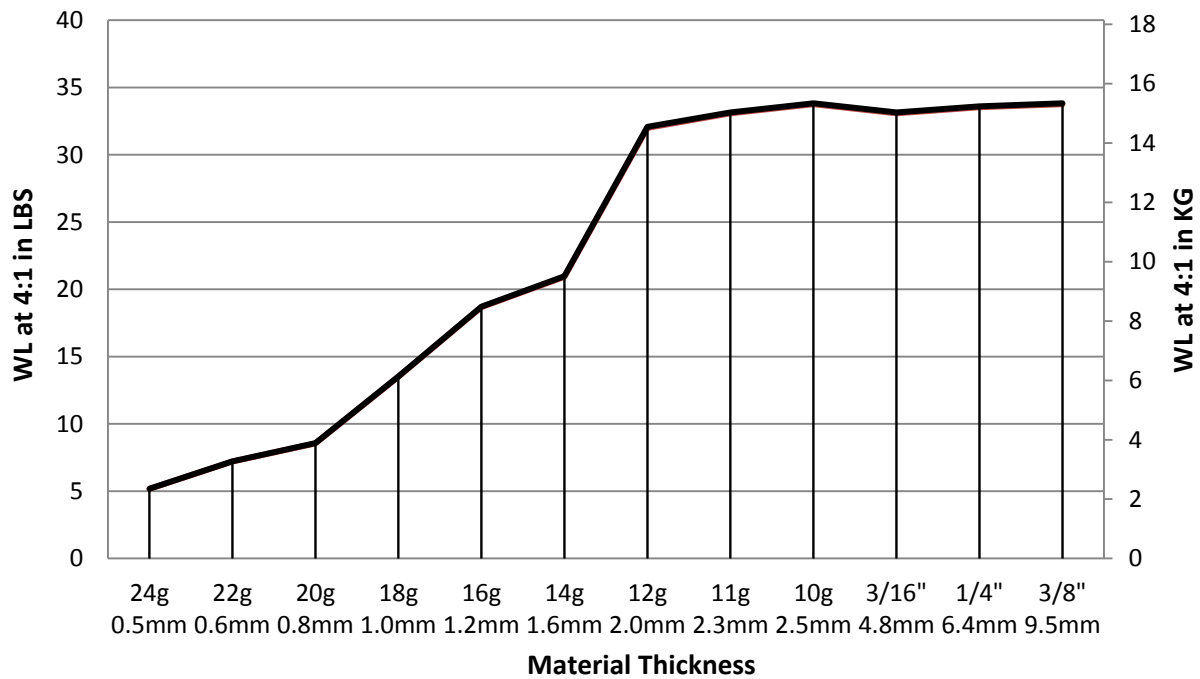
WORKING SURFACE

| SPECIFICATIONS | |
|--|--------------------------------|
| P/N: 8140480 - MAGSWITCH AR30 NAAMS | |
| Max Breakaway* | 134 lbs/60.9 kg |
| Working Load 4:1* | 33.5 lbs/15.2 kg |
| Full Saturation Thickness | 10 ga/3.5 mm |
| Max Shear 2:1* | 15 lbs/6.8 kg |
| Minimum Thickness for De-Stack | 10 ga/3.5 mm |
| Min Actuation Pressure | 16 psi/1.1x10 ⁵ pa |
| Max Actuation Pressure | 100 psi/6.9x10 ⁵ pa |
| Off Target Actuation Pressure | 48 psi/3.3x10 ⁵ pa |
| Net Weight | 1.53 lbs/ 0.70 kg |
| Air Port Thread | M5x0.8 |
| NAAMS Mount | 4:M8x1.25/4: Ø 6.0 |
| Overall Height | 131.0 mm |
| Magnetic Pole Footprint | 36x31.2 mm |

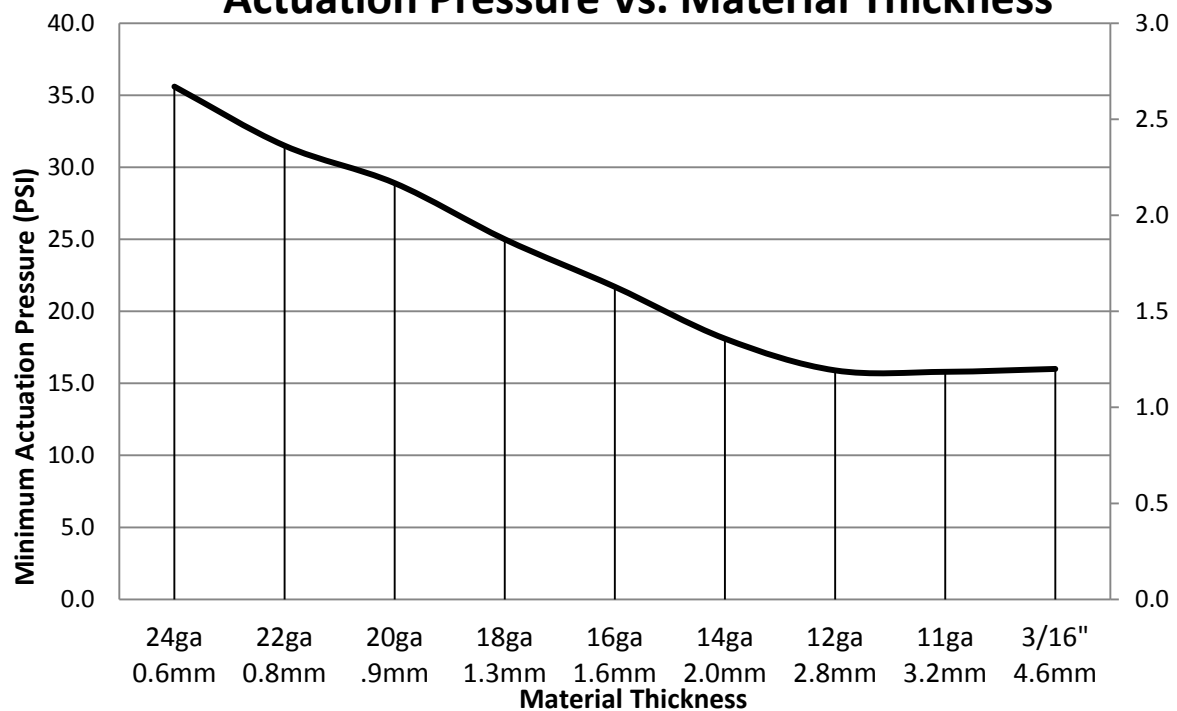
* Max Breakaway determined in laboratory environment on 2” thick SAE1018 Steel with surface roughness 63 micro inches. Many factors contribute to the actual breakaway force in each application. Always test the magswitch in each application before deployment. Refer to the magswitch information booklet for more information.



Magswitch AR30 NAAMS Working Load



Actuation Pressure Vs. Material Thickness

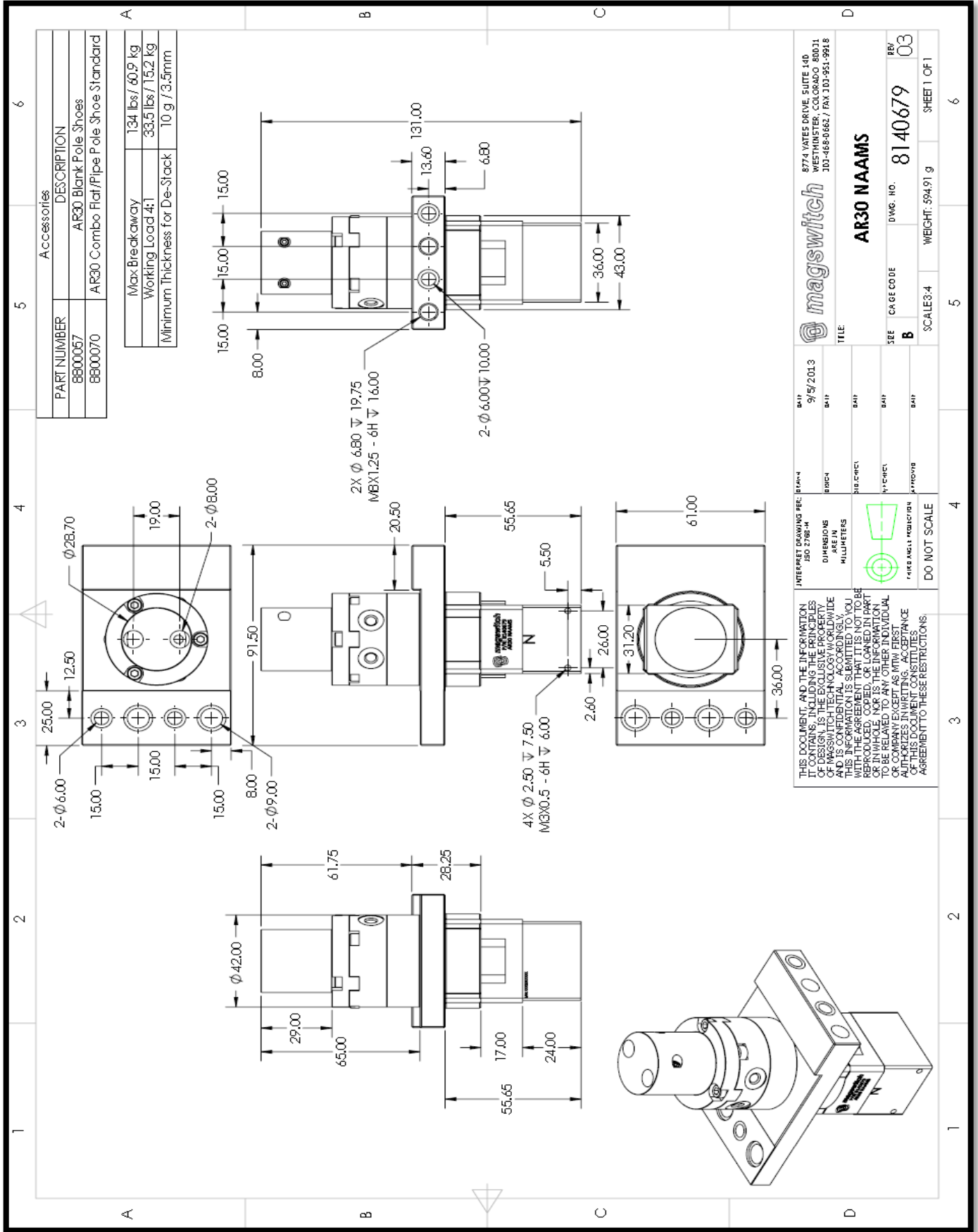


Part Number 110862
Revision Date: September 24, 2013

* Max Breakaway determined in laboratory environment on 2" thick SAE1018 Steel with surface roughness 63 micro inches. Many factors contribute to the actual breakaway force in each application. Always test the magswitch in each application before deployment. Refer to the magswitch information booklet for more information.



Part Number 110862
 Revision Date: September 24, 2013



magswitch
 8774 YATES DRIVE, SUITE 140
 WESTMINSTER, COLORADO 80031
 303-466-0662 / FAX 303-951-9918

AR30 NAAMS

REV: 03
 DWG. NO.: 8140679

DATE: 9/19/2013
 DRAWN BY: [Blank]
 CHECKED BY: [Blank]
 DESIGNED BY: [Blank]
 APPROVED BY: [Blank]

DATE: [Blank]
 DATE: [Blank]
 DATE: [Blank]