



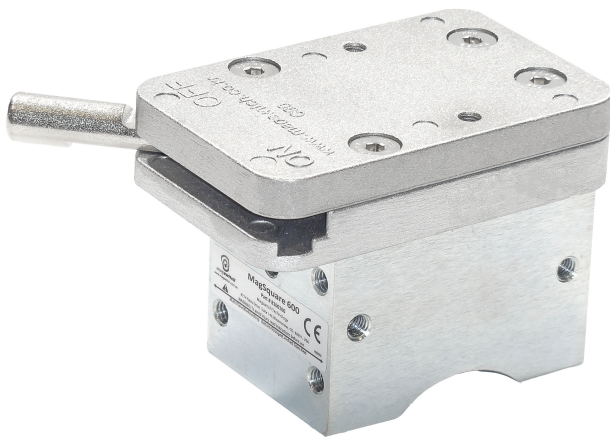
Magswitch Technology Korea.
 23, Sinseon-ro 303beon-gil,
 Nam-gu, Busan-City, South
 Korea. // Tel:051-621-9648
 Magswitch.co.kr

Magswitch Welding Carriage Rail Magnet

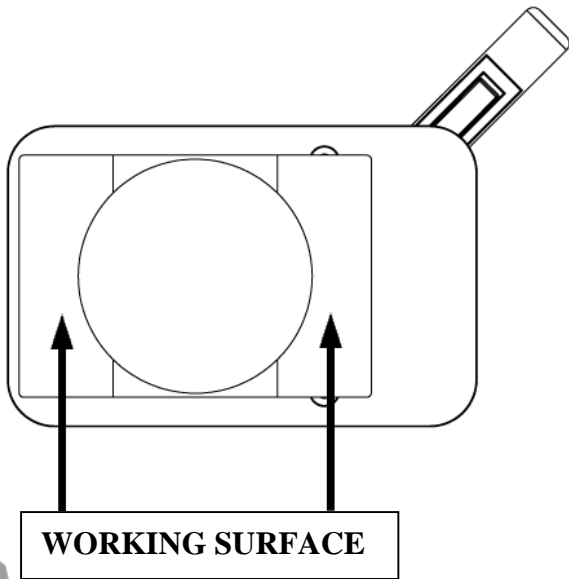
Model#: R5040-C90

The Magswitch MagMount is a single lever operation switchable magnet that allows for easy movement and placement of a tool. The top mount magnets feature two magnets are ideal for supporting fixtures over a distance. The fixed bar magnet is for flat steel, the swivel bar magnet is for round or uneven shapes.

WARNING!
Do Not Operate Unless In
Contact With Ferrous Target

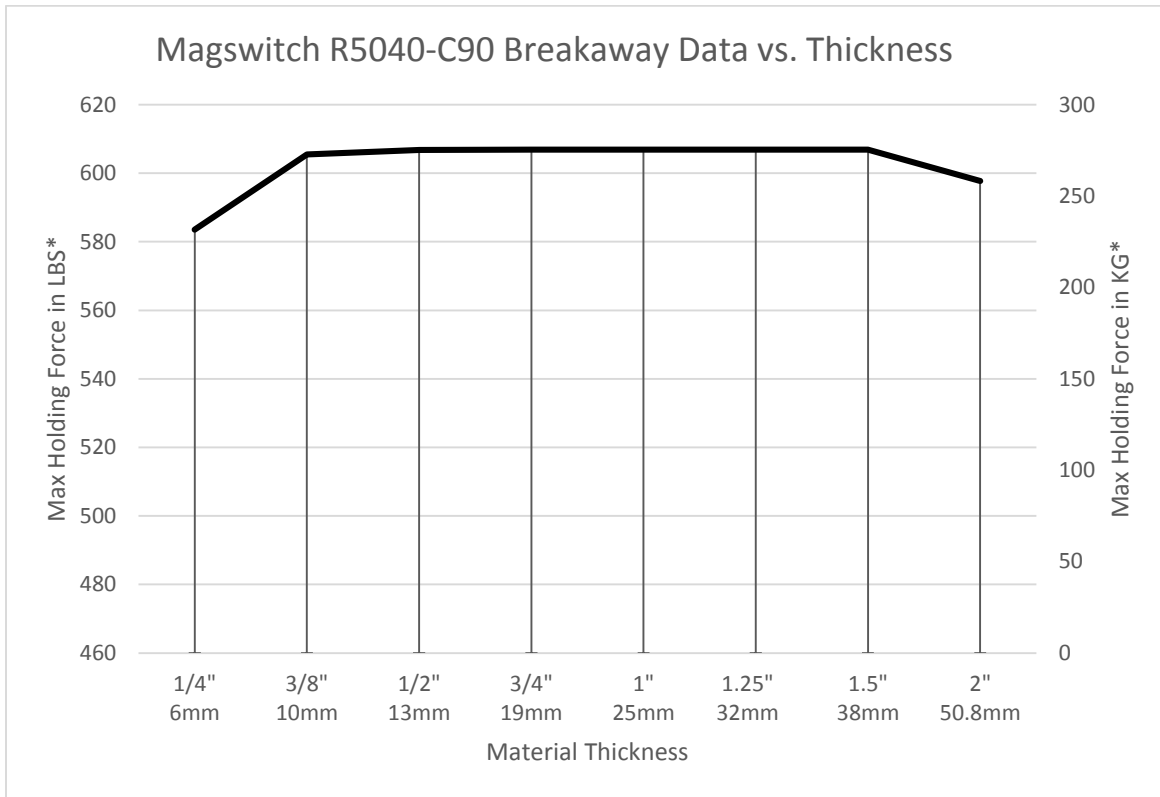


SPECIFICATIONS	
Model#: R5040-C90	
Max Breakaway*	240 kg
Full Saturation Thickness	9.5mm
Net Weight	1.70 kg
Overall Height	75 mm
Magnetic Pole Footprint	75mm x 51.5mm

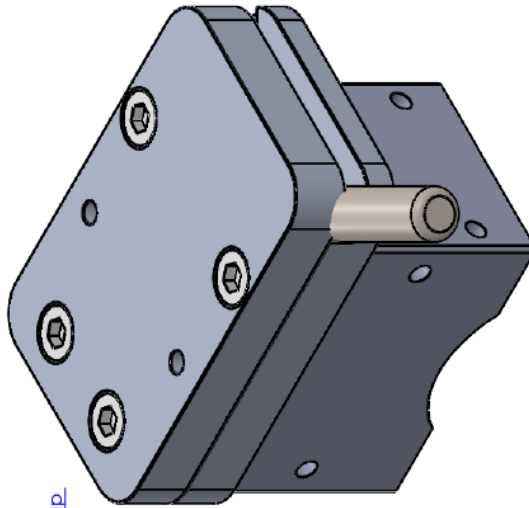



* Max Breakaway determined in laboratory environment on 2" thick SAE1018 Steel with surface roughness 63 micro inches. Many factors contribute to the actual breakaway force in each application. Always test the magswitch in each application before deployment. Refer to the magswitch information booklet for more information.

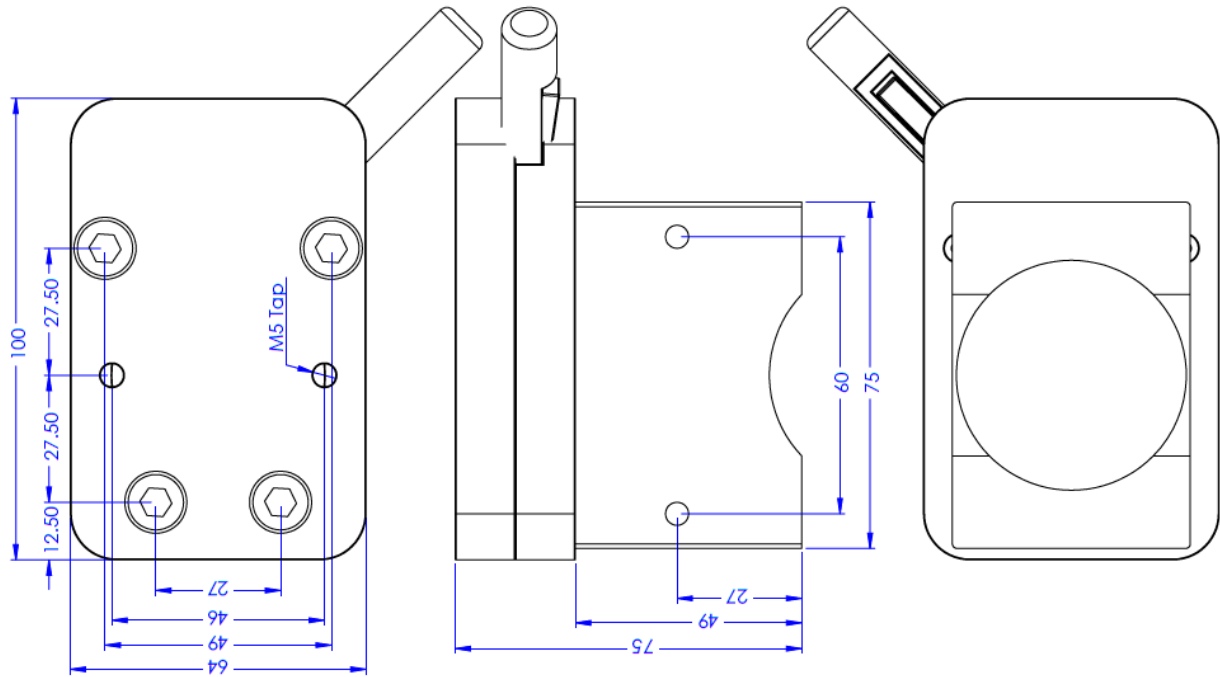
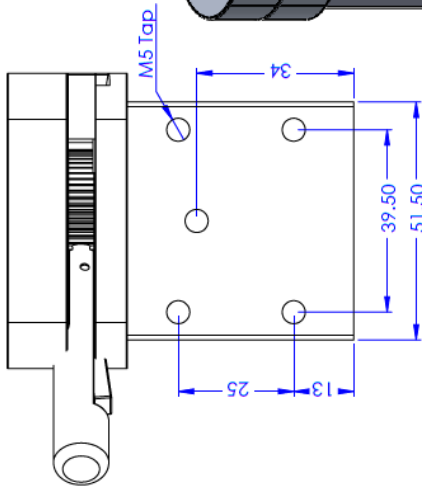




Revision Date: June 26, 2013



부품명 (Q)	1615.72	TITLE (명칭)	R5040 C90
WEIGHT		도면번호	K05010400_d
소재	알루미늄 <지정안함>	DATE	2016-09-05
MAT.		DATE	2016-09-05
입자	2016-09-05	DATE	2016-09-05
DATE		DATE	2016-09-05
승인	배성호	검토	신원진
Approved		Designed	
검개		Scale	1:1
Company	 매그스위치 테크놀로지 코리아(주)		시.도.구.책.1.4.3



Revision Date: June 26,2013