



Magswitch Technology, Inc.  
 1355 Horizon Ave  
 Lafayette, CO 80026  
 Magswitch.com.au  
 303-468-0662

# Magswitch MagMount 235

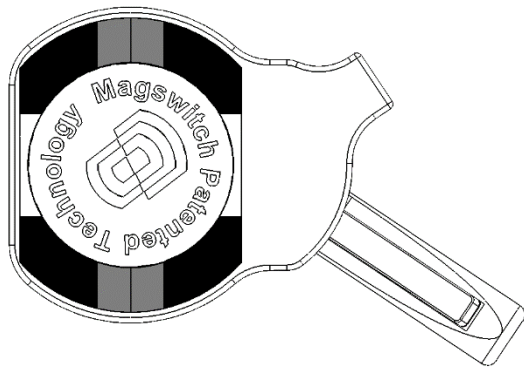
## P/N: 8100451

The Magswitch MagMount is a single lever operation switchable magnet that allows for easy movement and placement of a tool. The top mount magnets feature two magnets are ideal for supporting fixtures over a distance. The fixed bar magnet is for flat steel, the swivel bar magnet is for round or uneven shapes.

**WARNING!**  
**Do Not Operate Unless In**  
**Contact With Ferrous Target**



SPECIFICATIONS	
<b>P/N: 810451 - MAGSWITCH MagMount 235</b>	
Max Breakaway*	235 lbs/106 kg
Full Saturation Thickness	3/16" /4.75mm
Net Weight	1.2 lbs/0.5 kg
Overall Height	98 mm
Magnetic Pole Footprint	56mm x 42mm



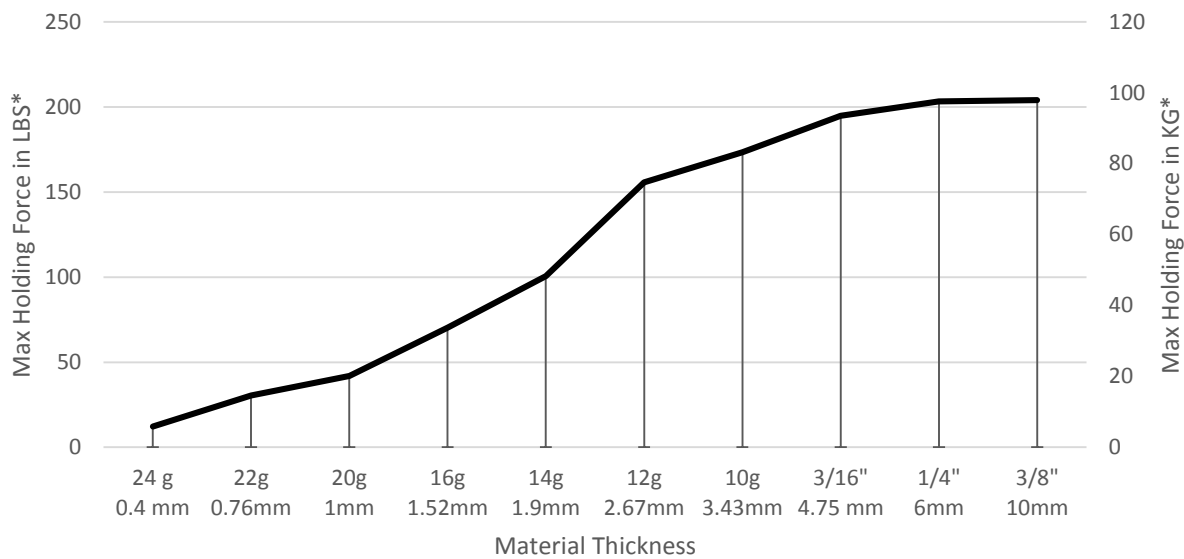
**WORKING SURFACE**  
**BLACK=BEST**  
**GRAY=MODERATE**



Part Number 110940  
 Revision Date: March 3, 2016

\* Max Breakaway determined in laboratory environment on 2" thick SAE1018 Steel with surface roughness 63 micro inches. Many factors contribute to the actual breakaway force in each application. Always test the magswitch in each application before deployment. Refer to the magswitch information booklet for more information.

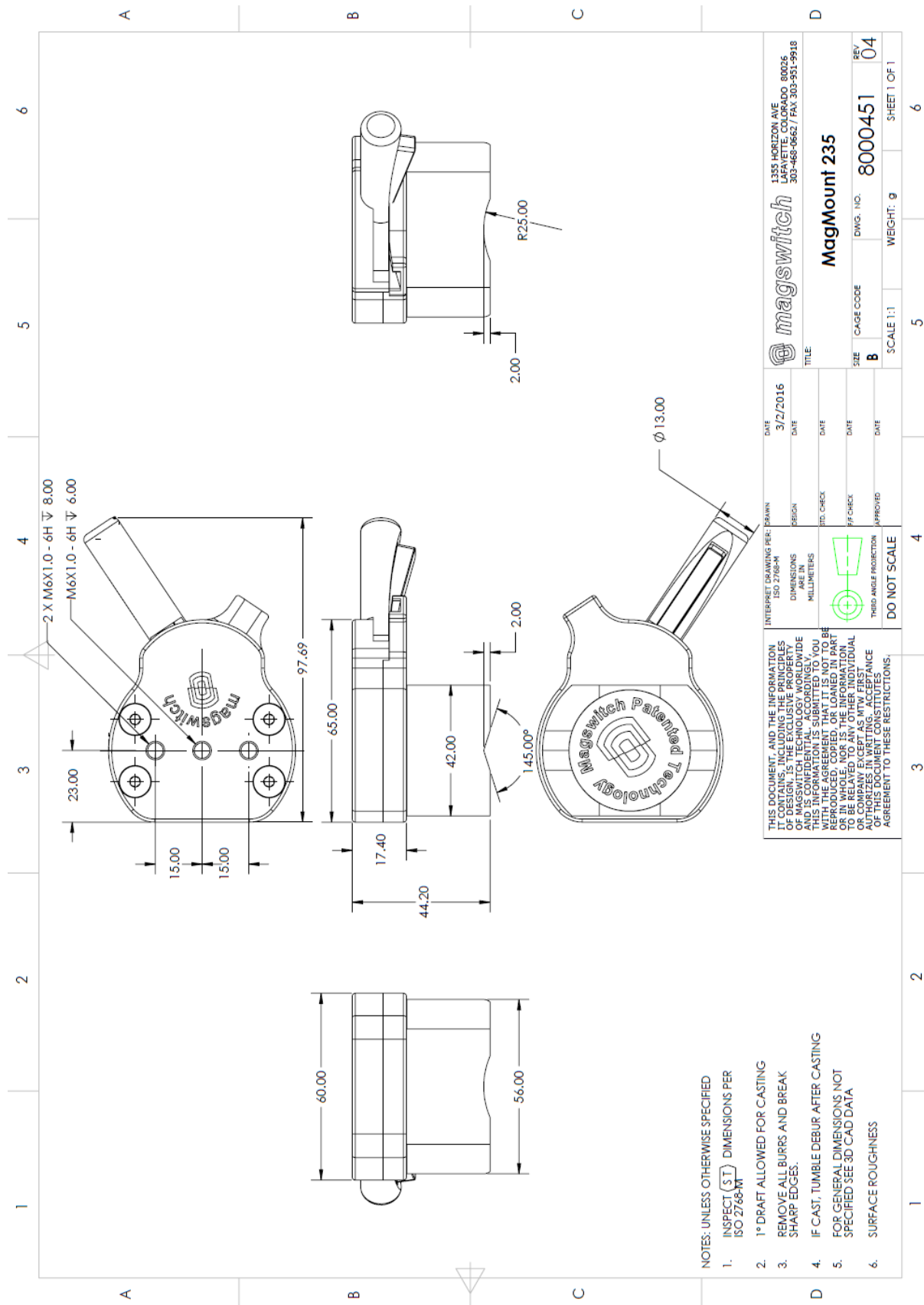
### Magswitch MagMount 235 Breakaway Data vs. Thickness



Part Number 110940  
Revision Date: March 3, 2016



Part Number 110940  
Revision Date: March 3, 2016



- NOTES: UNLESS OTHERWISE SPECIFIED
- INSPECT (ST) DIMENSIONS PER ISO 2768-MT
  - 1° DRAFT ALLOWED FOR CASTING
  - REMOVE ALL BURRS AND BREAK SHARP EDGES.
  - IF CAST, TUMBLE DEBUR AFTER CASTING
  - FOR GENERAL DIMENSIONS NOT SPECIFIED SEE 3D CAD DATA
  - SURFACE ROUGHNESS

THIS DOCUMENT, AND THE INFORMATION IT CONTAINS, INCLUDING THE PRINCIPLES OF DESIGN, IS THE EXCLUSIVE PROPERTY OF MAGSWITCH. IT IS NOT TO BE REPRODUCED, COPIED, OR LOANED IN PART OR IN WHOLE, NOR IS THE INFORMATION TO BE RELAYED TO ANY OTHER INDIVIDUAL WITHOUT THE WRITTEN PERMISSION OF THE AUTHORITIES IN WRITING. ACCEPTANCE OF THIS DOCUMENT CONSTITUTES AGREEMENT TO THESE RESTRICTIONS.		INTERPRET DRAWING PER: DRAWN ISO 2768-M DIMENSIONS ARE IN MILLIMETERS	DATE 3/2/2016
DO NOT SCALE		DESIGN DATE	DATE
		DR. CHECK DATE	DATE
		PF-CHECK DATE	DATE
APPROVED		DATE	DATE
TITLE <b>MagMount 235</b>		CAGE CODE <b>8000451</b>	REV <b>04</b>
SCALE 1:1		WEIGHT: g	SHEET 1 OF 1

1355 HORIZON AVE  
 LAFAYETTE, COLORADO 80026  
 303-468-0662 / FAX 303-351-9918