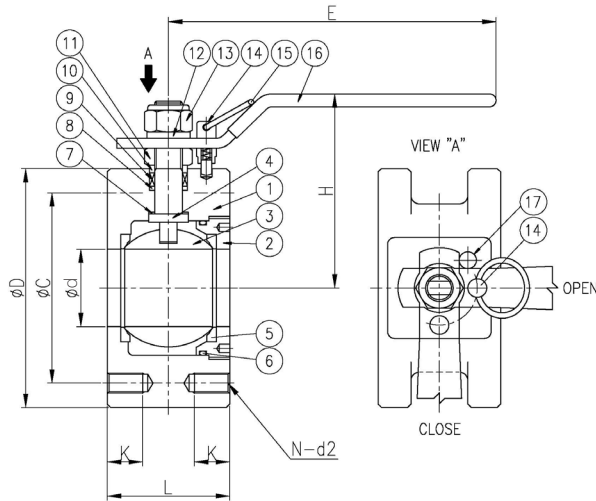


Compact Ball Valve - VBCP

VBCP

Compact Ball Valve (JIS 5K)



No.	Part Name	Material Spec.	
1	Body	FCD 450	SCS 13
2	Cover	SS 400	SUS 304
3	Ball	SCS 13	SCS 13
4	Stem	SUS 304	SUS 304
5	Seat Ring	PTFE + Glass 15%	
6	O-Ring	VITON	VITON
7	Stem Packing	POM	PTFE
8	Ring	C3604	SUS 304
9	V-Packing	PTFE	PTFE
10	Bush	C3604	SUS 304
11	Hex. Nut	SS 400	SUS 304
12	Spring Washer	SWRH	SUS 304
13	Locking Nut	SS 400	SUS 304
14	Locking Device	SUS 304	SUS 304
15	Ring	SUS 304	SUS 304
16	Handle	SS 400	SS 400
17	Stopper	SUS 304	SUS 304

REFERENCE DIMENSIONS

Unit :mm

Nominal Size	cd	L	E	H	FLANGE			
					cd	cC	K	N-d2
VBCP-5K20A-C	20.0	38.0	150.0	69.0	85.0	65.0	12.0	4-M10
VBCP-5K25A-FCD	25.0	42.0	150.0	85.0	95.0	75.0	12.0	4-M10
VBCP-5K32A-FCD	32.0	50.0	170.0	100.0	115.0	90.0	15.0	4-M12
VBCP-5K40A-FCD	39.0	60.0	170.0	105.0	120.0	95.0	15.0	4-M12
VBCP-5K50A-FCD	46.0	70.0	190.0	110.0	130.0	105.0	20.0	4-M12
VBCP-5K65A-FCD	62.0	95.0	210.0	122.0	155.0	130.0	20.0	4-M12
VBCP-5K80A-FCD	72.0	110.0	230.0	140.0	180.0	145.0	25.0	4-M16
VBCP-5K100A-FCD	85.0	132.0	380.0	142.0	200.0	165.0	30.0	4-M16

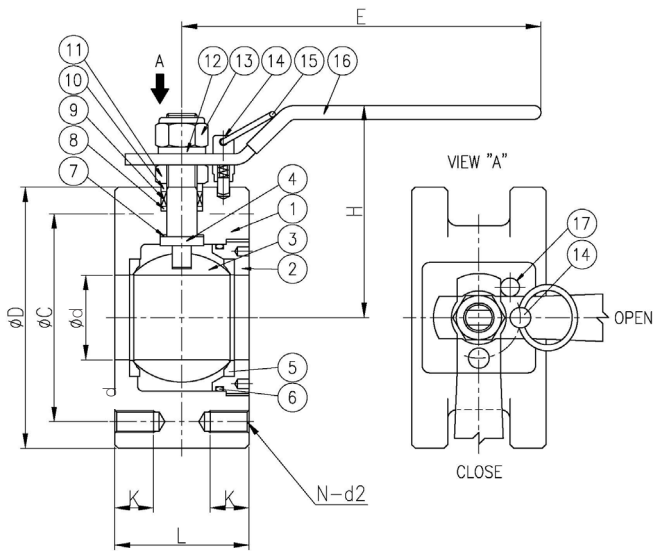
Specification

- Nominal Pressure : 5 kgf/Cm2
- Test Pressure Body : 8 kgf/Cm2
- Seat Leakage : 7 kgf/Cm2
- Maximum Working Pressure : 150°C
- Applicable system : Fuel Oil, Lub Oil, Fresh Water, Steam, Sea Water, Compressed Air.

Compact Ball Valve - VBCP

VBCP

Compact Ball Valve (JIS 20K)



No.	Part Name	Material Spec.	
1	Body	FCD 450	SCS 13
2	Cover	SS 400	SUS 304
3	Ball	SCS 13	SCS 13
4	Stem	SUS 304	SUS 304
5	Seat Ring	PTFE + Glass 15%	
6	O-Ring	VITON	VITON
7	Stem Packing	POM	PTFE
8	Ring	C3604	SUS 304
9	V-Packing	PTFE	PTFE
10	Bush	C3604	SUS 304
11	Hex. Nut	SS 400	SUS 304
12	Spring Washer	SWRH	SUS 304
13	Locking Nut	SS 400	SUS 304
14	Locking Device	SUS 304	SUS 304
15	Ring	SUS 304	SUS 304
16	Handle	SS 400	SS 400
17	Stopper	SUS 304	SUS 304

REFERENCE DIMENSIONS

Unit :mm

Nominal Size	ϕd	L	E	H	FLANGE			
					ϕD	ϕC	K	N-d2
VBCP-20K20A-C	20.0	38.0	150.0	80.0	100.0	75.0	12.0	4-M12
VBCP-20K25A-FCD	25.0	42.0	150.0	100.0	125.0	90.0	15.0	4-M16
VBCP-20K32A-FCD	32.0	50.0	170.0	110.0	135.0	100.0	15.0	4-M16
VBCP-20K40A-FCD	39.0	60.0	170.0	115.0	140.0	105.0	20.0	4-M16
VBCP-20K50A-FCD	46.0	70.0	190.0	123.0	155.0	120.0	25.0	8-M16
VBCP-20K65A-FCD	62.0	95.0	210.0	132.0	175.0	140.0	30.0	8-M16
VBCP-20K80A-FCD	72.0	110.0	230.0	150.0	200.0	160.0	35.0	8-M20
VBCP-20K100A-FCD	85.0	130.0	380.0	160.0	225.0	185.0	35.0	8-M20
VBCP-20K125A-C	100.0	155.0	380.0	180.0	270.0	225.0	40.0	8-M22

Specification

- Nominal Pressure : 20 kgf/Cm2
- Test Pressure Body : 30 kgf/Cm2
- Seat Leakage : 25 kgf/Cm2
- Maximum Working Pressure : 150°C
- Applicable system : Fuel Oil, Lub Oil, Fresh Water, Steam, Sea Water, Compressed Air.