

Best Price, Best Delivery, Best Service
Parts Sales & Technical Service
www.doosanengine.com



Parts Sales & Technical Service



Doosan Engine

Doosan Engine

3Best [Best Price, Best Delivery, Best Service] are our mottos,
with which we always pursue customer satisfaction.

Parts Sales Service with 3Best >>

3Best

Best Price

- Reasonable price through world wide network

Best Delivery

- Quick reply within one day
- Quick delivery from high availability

Best Service

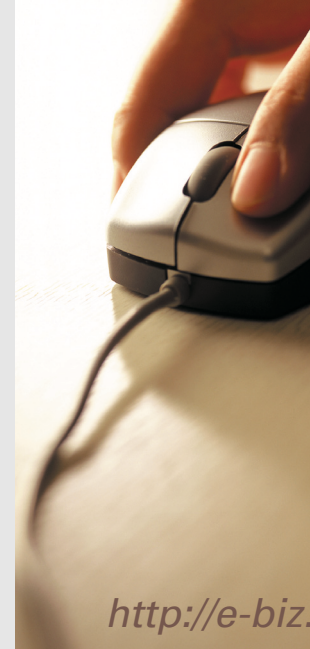
- Superior speed and quality for full customer satisfaction

Warehouse >>



Doosan Engine is always ready for you !

With a large number and wide variety of components for diesel engines in stock, Doosan Engine is ready to supply any parts to our customers at competitive prices, no matter where they are and when they need them. From small, consuming parts to heavy parts such as cylinder liners, the many parts that customers demand are in stock at domestic and overseas warehouses.



Even if you are in the middle of ocean,
you can find Doosan Engine with a simple click!

With the establishment of the e-Biz System for online customer service covering 「Parts Sales」, 「Guarantee Service」, 「Maintenance Service」 and 「Technical Support」, Doosan Engine provides the convenience and confidence of buying parts from an internet shopping mall so that customers can easily select the correct items for all engines, send the inquiries, and order by clicking the mouse.

<http://e-biz.doosanengine.com>

<< e-Biz System

Contact Points ✓

✓ HEAD OFFICE & Changwon Plant

69-3, Sinchon-Dong, Changwon-City, Gyeongnam, Korea. 641-370

Phone : Domestic Sales +82-55-260-6221 / 6923
Overseas Sales +82-55-260-6208 / 6910
Delivery Control +82-55-260-6634 / 6142 / 6147
Telefax : +82-55-260-6783

✓ EUROPE OFFICE

Heidenkampsweg 100, 8. OG 20097 Hamburg, Germany

Phone. +49-40-2533-5656 / Telefax. +49-40-2533-5661

✓ SINGAPORE OFFICE

78, Shenton Way, #16-04, Singapore 079120

Phone. +65-6222-5515 / Telefax. +65-6222-5525

✓ SHANGHAI OFFICE

828 Hua Du Mansion 14F Room E, Zhang Yang Road,
Pudong, Shanghai, China

Phone. +21-6875-0876 / Telefax. +21-6875-0864

Authorized Sales Agents ✓

Domestic Agents



BOSUNG ENGINEERING CO., LTD.

1189-1, Choryang 3-Dong, Dong-Gu, Pusan, Korea
Tel. : +82-51-466-0881~5 Fax : +82-51-466-0886/9



KOREA MARINE ENGINEERING CO., LTD.

Sewang Bldg., 5-20, Chungang-Dong, Chung-Gu, Pusan, Korea
Tel. : +82-51-415-1449 Fax : +82-51-462-1426



DONGJIN INTEC CO., LTD.

DINTEC Bldg., 1144-10, Choryang 3-Dong, Dong-Gu, Pusan, Korea
Tel. : +82-51-465-8612 Fax : +82-51-462-7907



YIKANG MARINE SERVICES CO., LTD.

141-156, 3Ga, Namhang-Dong, Youngdo-Gu, Pusan, Korea
Tel. : +82-51-414-8801/7 Fax : +82-51-412-8860

Overseas Agents

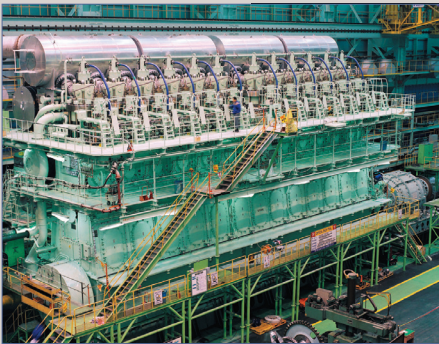


BOSUNG ENGINEERING CO., LTD.

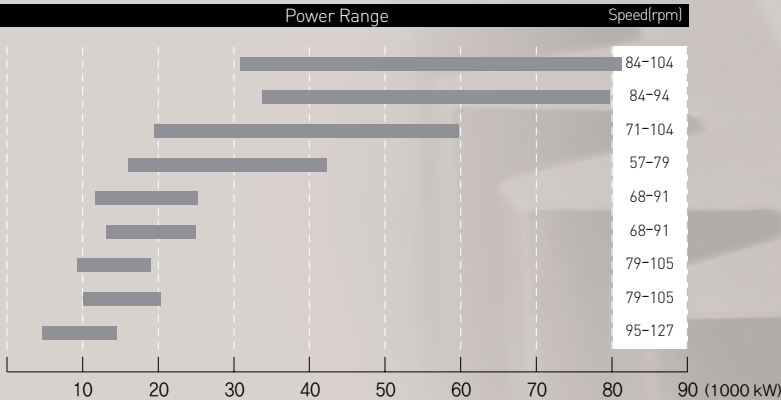
Hamburg Branch
Heidenkampsweg 100, 8, OG20097 Hamburg, Germany
Tel. : +49-40-2533-5657 Fax : +49-40-2533-5663

Production Range ✓

• DOOSAN-MAN B&W (2-Stroke)



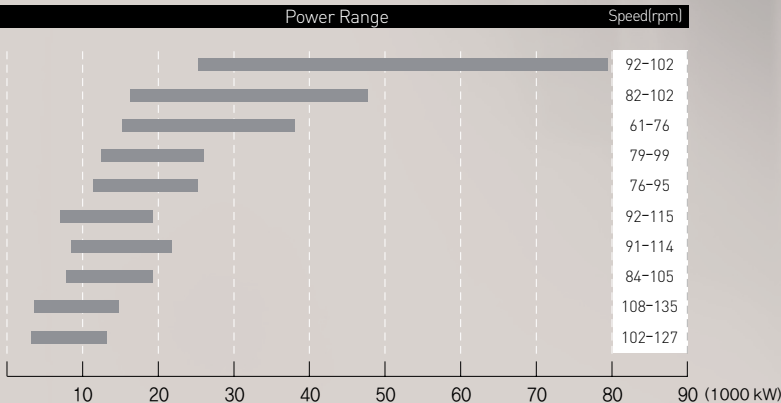
98MC / MC-C
98ME-C
90MC / MC-C
80MC / MC-C
70MC / MC-C
70ME-C
60MC / MC-C
60ME-C
50MC / MC-C



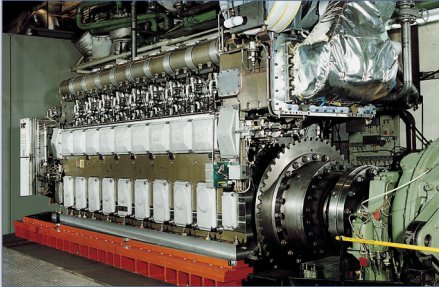
• DOOSAN-Wärtsilä (2-Stroke)



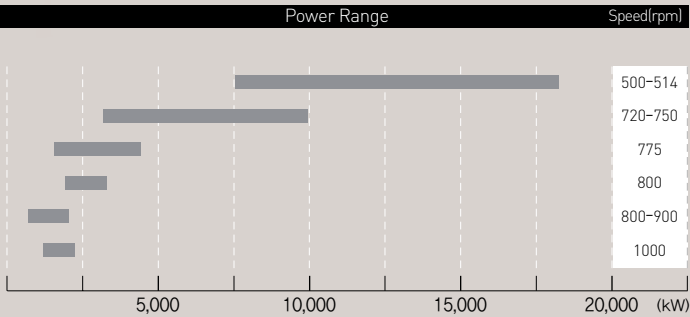
RT-flex96C / RTA96C
RTA84C
RT-flex84T-D / RTA84T-D
RTA72U-B
RT-flex68-B / RTA68-B
RTA62U-B
RT-flex60C
RT-flex58T-B / RTA58T-B
RTA52U
RTA48T-B



• DOOSAN-MAN Diesel (4-Stroke)



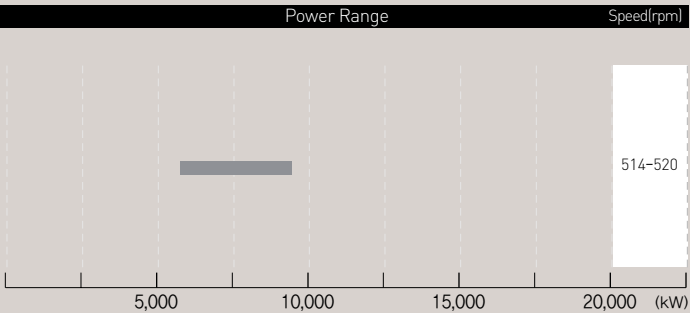
48 / 60B
32 / 40
28 / 32
27 / 38
23 / 30
21 / 31



• DOOSAN-S.E.M.T. Pielstick (4-Stroke)



PC2-5V

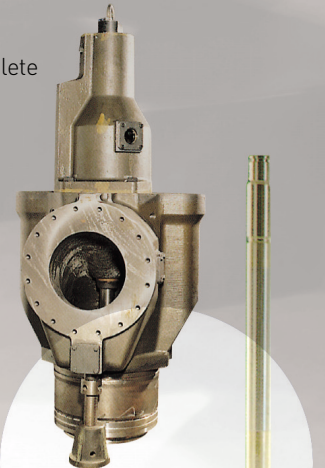


Major Spare Parts ✓

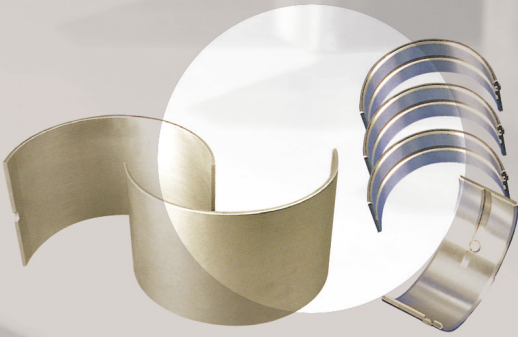
⦿ Cylinder Liner



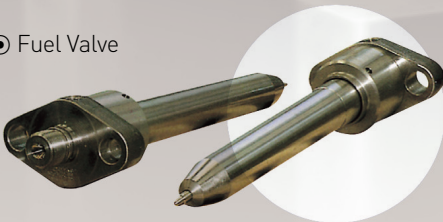
⦿ Exh. V/V Complete



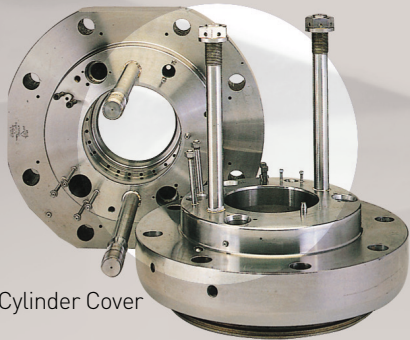
⦿ Bearing



⦿ Fuel Valve



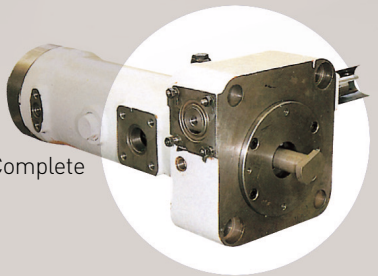
⦿ Cylinder Cover



⦿ Exh. V/V Spindle & Seat



⦿ Fuel Pump Complete



⦿ Piston Rings & Scraper Rings of Stuffing Box



⦿ Piston Crown



⦿ Digital Crankshaft Deflection Gauge



Advanced Measutal[®]

Digital Crankshaft Deflection Gauge



Advanced Measutal[®]

◎ Patent Application Number

: 10-2006-0028746

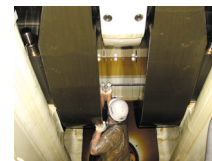
: 10-2007-0051373

: 10-2007-0051389

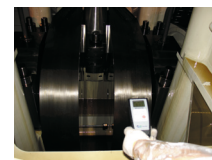
◎ Utility Model Application Number

: 20-2006-0008400

Introduction



< Conventional Method >



< Using Measutal >

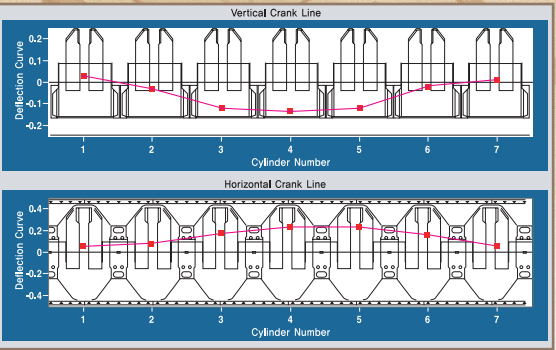
Measutal[®] is a powerful and precise digital crankshaft deflection gauge.

It is fitted between the crank webs, the engineer takes all readings from outside the engine through wireless communication, without the drawbacks of heat, oil drop, etc.

The instrument consists of a measuring unit and a display unit. The display unit displays the deflection data and transfers data to Computer.

Data Management Software

Date	2007. 7. 5	Engine Information	Engine Type	Cylinder Total	7	Time (hours)	Continuous running hours before measuring	100	Total running hours	10000
CRANK POSITION		Temperatures	Engine Condition	Ambient	29	DRAFT	Fore	3	Alt	2
Near Bottom, Camshaft side : BP	0.00	Lubricating Oil	36	HT Cooling Water	36	Unit : mm				
Camshaft side : P	-0.10									
Top : T	-0.22									
Exhaust side : E	-0.23									
Near Bottom, Exhaust side : BE	-0.07									
Bottom 1/2" (BS+BP) : B	-0.04									
Top - Bottom or (T-B) : V	-0.19									
Exhaust - Cam side (E-P) : H	-0.13									
Deflection Curve[Vertical]	0.03									
Deflection Curve[Horizontal]	0.05									



Data management software can make you to manage the deflection data history.

Horizontal and Vertical section diagram is automatically calculated, and displayed on screen, and reported.

Measured data in Display Unit is transferred to Computer by wireless communication.

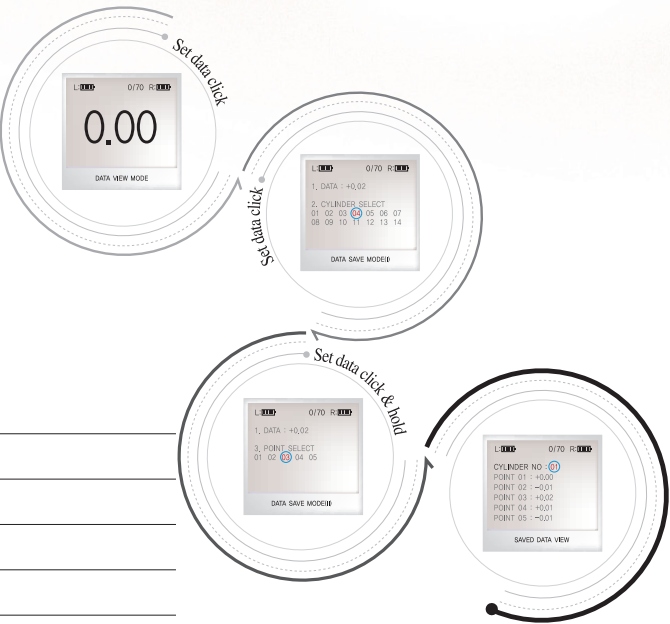
Key Feature

Enhanced Data Saving Function

Measutal[®] make possible to save cylinder number and measuring point when measured data is saved.

Specifications

Measutal	Measuring range	75~490mm
	Wireless comm, Distance	30m (open space)
	Temperature range	80℃ (max.)
Measuring Unit	Dimension	80(L), 31(W), 70(H)
	Weight	150g (with battery)
	Power	1.5V alkaline battery × 4, AAA size
	Power Consumption	24 hours continuous operation
	Accuracy	0.01mm
Display Unit	Measuring force	20N (max.)
	Dimension	62(L), 140(W), 30(H)
	Weight	130g (with battery)
	Power	1.5V alkaline battery × 2, AA size
	Power Consumption	24 hours continuous operation



Data Measuring



Measuring Unit

Wireless Communication (Bluetooth)

Data display & Store



Display Unit

Wireless Communication (Bluetooth)

Data Management



Computer