

TEMPERATURE SENSOR MPT100



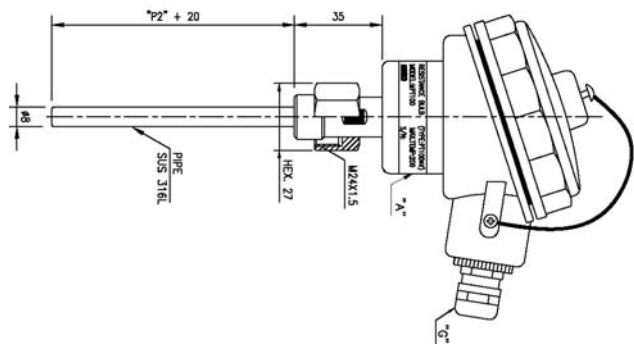
FEATURES

- Heavy-duty temperature sensor for ships and marine engines. This temperature sensor is based on a PT100 element, which gives a reliable and accurate measurement.
- Measuring Range : -50 ~ 200°C
- Sensing Element : PT100 (Platinum Thermal Resistance Bulb)
- Enclosure : IP56

SPECIFICATION

	LENGTH	FITTING THREAD	CABLE GLAND
NO	"P2"	S	G
1	50		
2	60		
3	80		PG9
4	100	PF 1/2"	
5	120		15C
6	150	PF 3/4"	
7	200		20C
8	250		
9	300		

DIMENSIONS



- Insertion length (P2, mm)
 - 50, 60, 80, 100, 120, 150, 200, 300 and etc
- Fitting Thread (S)
 - PF 1/2, PF 3/4 and etc
- Cable Gland (G)
 - PG9, JIS15C, JIS20C and etc

