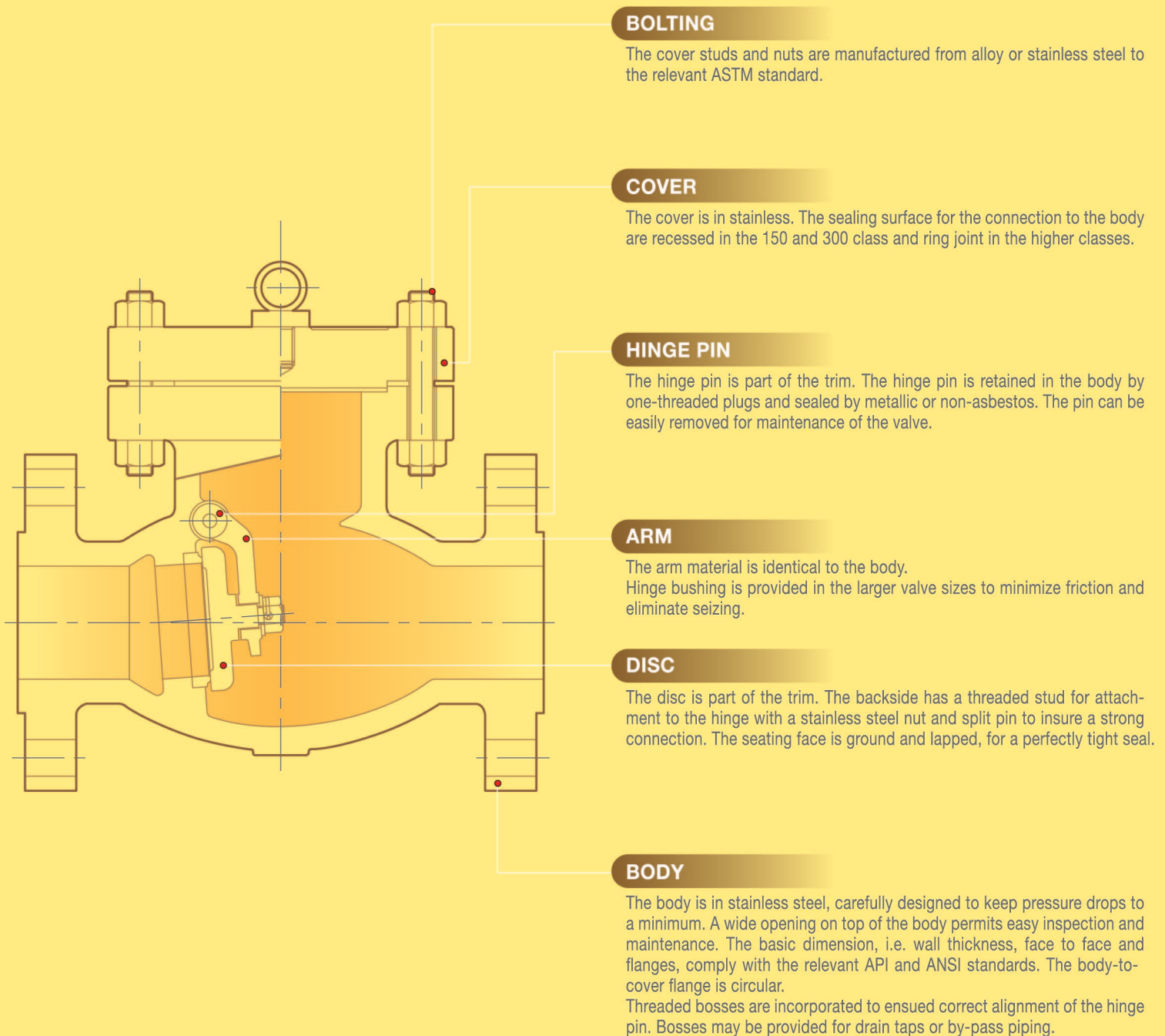


# SWING CHECK VALVES

BOLTED COVER

# CAST STAINLESS STEEL

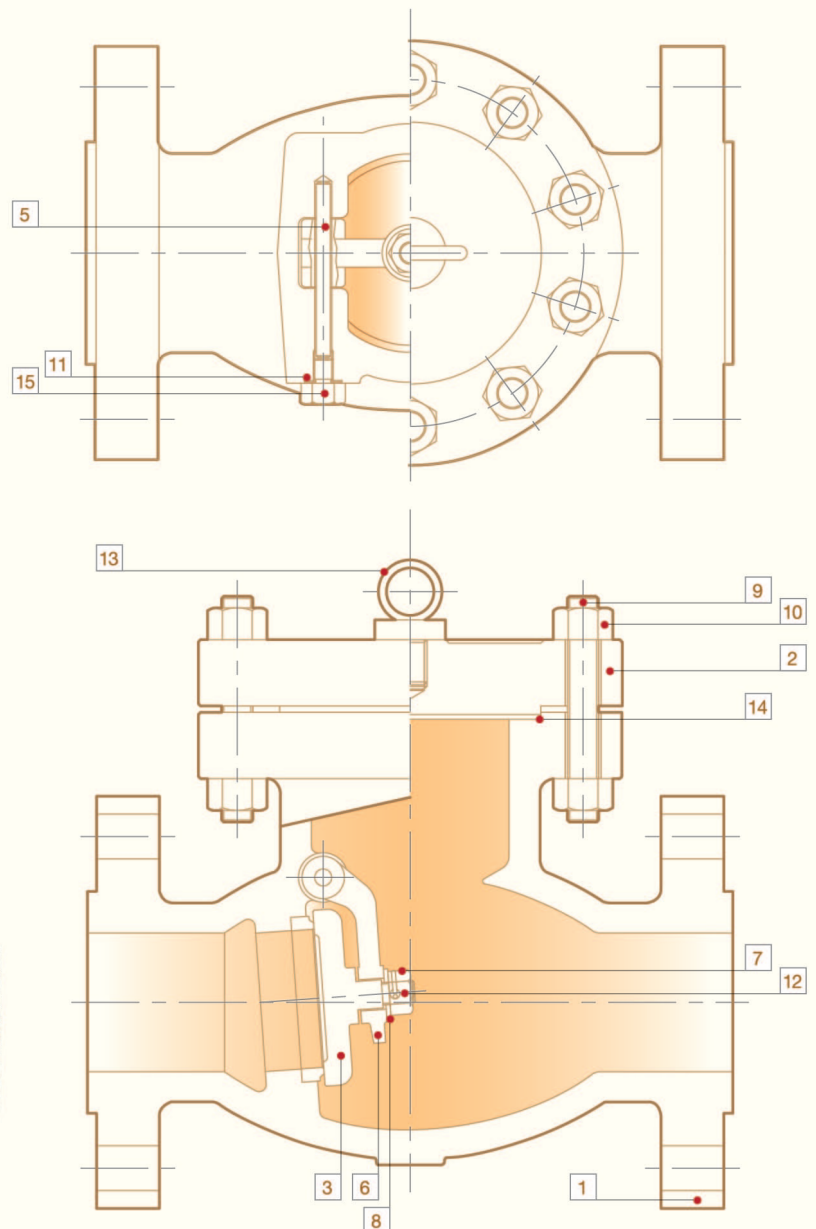
## SWING CHECK VALVES BOLTED COVER



# SWING CHECK VALVES BOLTED COVER CAST STAINLESS STEEL

NO	NAME OF PART	ASTM SPECIFICATION				REMARKS
		CORROSION SERVICE				
1	BODY	A351-CF8	A351-CF8M	A351-CF3	A351-CF3M	
2	COVER	A351-CF8	A351-CF8M	A351-CF3	A351-CF3M	
3	DISC	A351-CF8	A351-CF8M	A351-CF3	A351-CF3M	
5	HINGE PIN	A276-304	A276-316	A276-304L	A276-316L	
6	ARM	A351-CF8	A351-CF8M	A351-CF3	A351-CF3M	
7	DISC NUT	A194-8	A194-8M	A193-8M	A193-8M	
8	WASHER	A240-304	A240-316	A240-304L	A240-316L	
9	COVER BOLT	A193-B8	A193-B8	A193-B8	A193-B8	
10	COVER NUT	A194-8	A194-8	A194-8	A194-8	
11	PLUG GASKET	COMMERCIAL	COMMERCIAL	COMMERCIAL	COMMERCIAL	
12	SPLIT PIN	A580-304	A580-304	A580-304	A580-304	
13	EYE BOLT 6" & OVER	A307-B	A307-B	A307-B	A307-B	
14	GASKET	COMMERCIAL	COMMERCIAL	COMMERCIAL	COMMERCIAL	NOTE 1
15	PLUG	A276-304	A276-316	A276-304L	A276-316L	

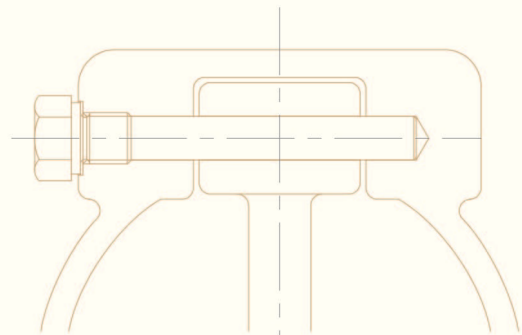
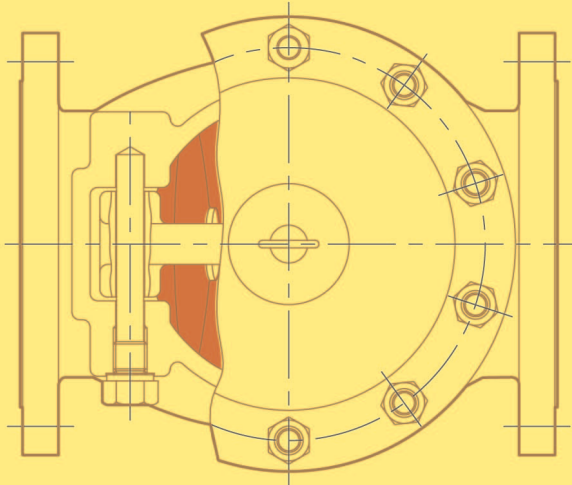
Note 1 : Gasket material : customer's requirements, see page 63



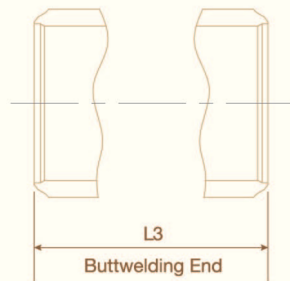
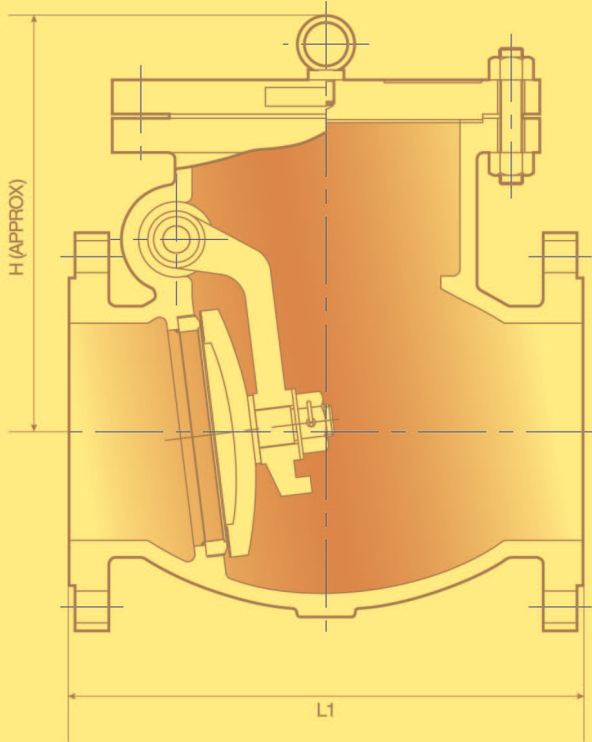
# ASME CLASS 150LB

SWING CHECK VALVES  
BOLTED COVER  
CAST STEEL

VALVE SIZE	inch	2	2 1/2	3	4	5	6	8	10	12	14	16	18	20	24	28	30
	mm	50	65	80	100	125	150	200	250	300	350	400	450	500	600	700	750
L1 & L3	inch	8.0	8.5	9.5	11.5	13.0	14.0	19.5	24.5	27.5	31.0	34.0	38.5	38.5	51.0	57.0	60.0
	mm	203	216	241	292	330	356	495	622	699	787	864	978	978	1295	1448	1524
H	inch	6.1	6.7	7.3	7.9	9.3	10.0	12.0	13.6	15.0	18.1	21.5	25.6	26.4	35.4	40.0	45.2
	mm	155	170	185	200	235	255	305	345	380	460	545	650	670	900	1016	1149
WEIGHT	LB	33.1	48.5	59.5	90.4	143.3	176.4	313.1	390.3	639.5	862.2	1016.5	1411.2	1719.9	3285.5	4520.3	6392.3
	Kg	15	22	27	41	65	80	142	177	290	391	461	640	780	1490	2050	2899



ALL SIZE

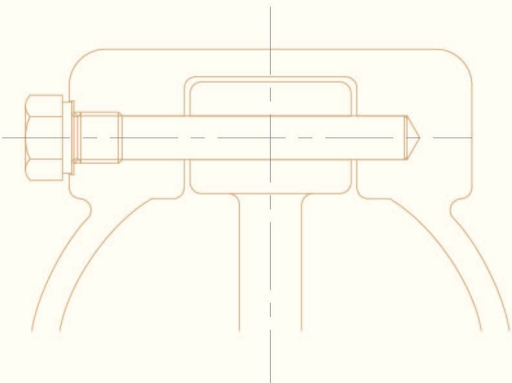




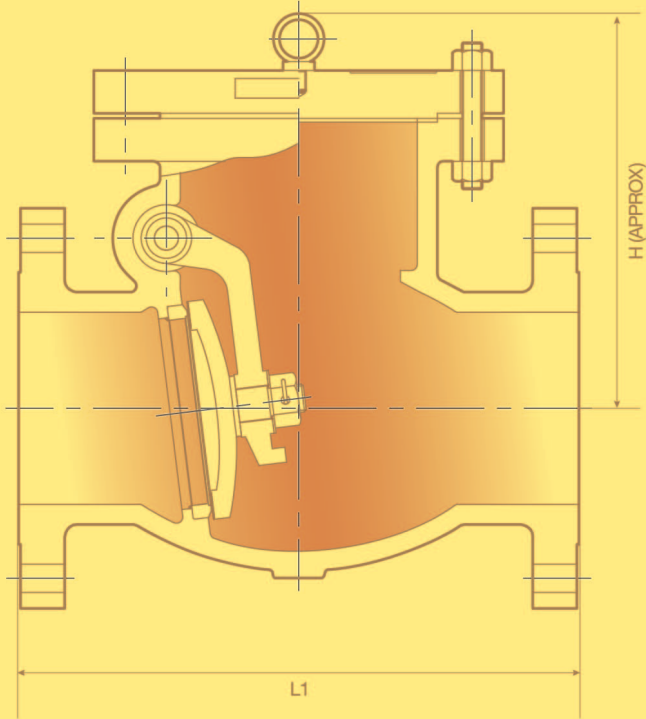
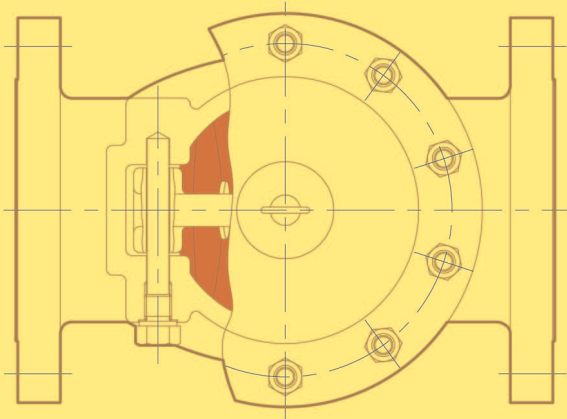
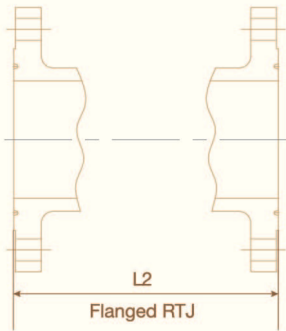
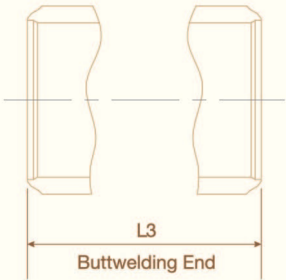
ASME CLASS 300LB

SWING CHECK VALVES  
BOLTED COVER  
CAST STEEL

VALVE SIZE	inch	2	2 1/2	3	4	5	6	8	10	12	14	16	18	20	24	28
	mm	50	65	80	100	125	150	200	250	300	350	400	450	500	600	700
L1 & L3	inch	10.5	11.5	12.5	14.0	15.75	17.5	21.0	24.5	28.0	33.0	34.0	38.5	40.0	53.0	59.0
	mm	267	292	318	356	400	444	533	622	711	838	864	978	1016	1346	1499
L2	inch	11.12	12.12	13.12	14.62	16.38	18.12	21.62	25.12	28.62	33.62	34.62	39.12	40.75	53.88	60.0
	mm	283	308	333	371	416	460	549	638	727	854	880	994	1035	1369	1524
H	inch	6.9	7.5	8.1	8.7	11.6	12.8	14.5	18.6	20.9	22.8	27.4	31.4	30.6	39.6	24.2
	mm	175	190	205	220	295	326	368	473	530	580	695	797	776	1007	1149
WEIGHT	LB	41.9	66.2	77.2	119.1	198.5	282.4	463.1	590.9	915	1503.8	1647.1	2756.3	3307.5	4917.2	6504.8
	Kg	19	30	35	54	90	128	210	268	415	682	747	1250	1500	2230	2950



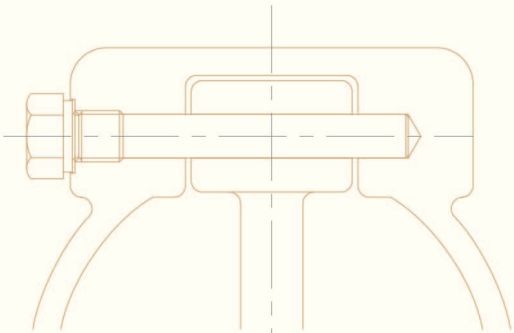
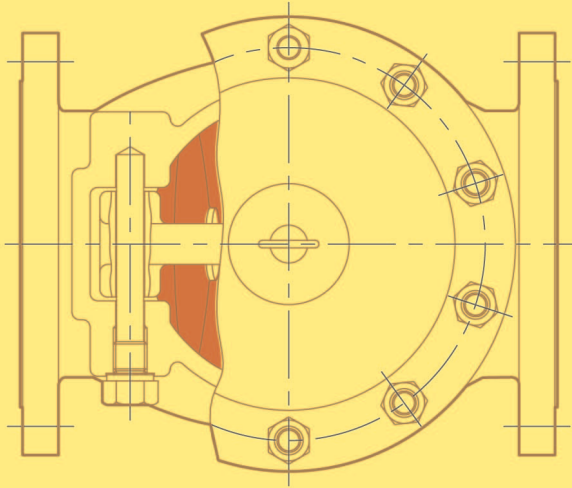
ALL SIZE



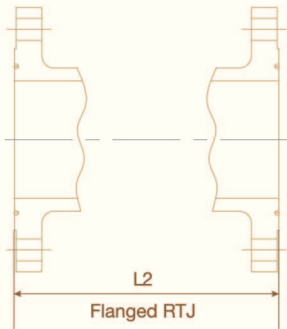
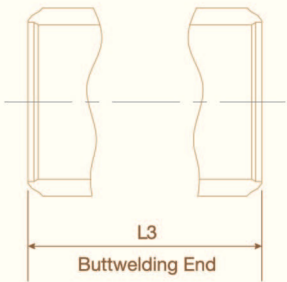
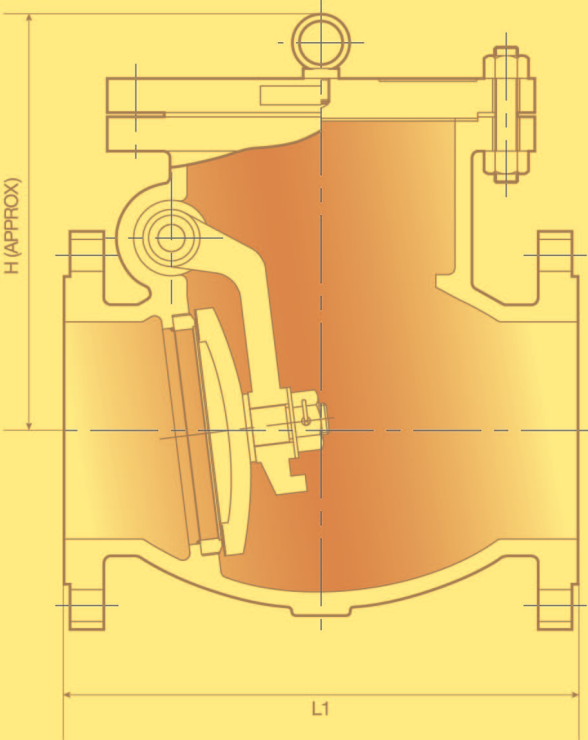
# ASME CLASS 600LB

SWING CHECK VALVES  
BOLTED COVER  
CAST STEEL

VALVE SIZE	inch	2	2 1/2	3	4	5	6	8	10	12	14	16	18	20	24
	mm	50	65	80	100	125	150	200	250	300	350	400	450	500	600
L1 & L3	inch	11.5	13.0	14.0	17.0	20.0	22.0	26.0	31.0	33.0	35.0	39.0	43.0	47.0	55.0
	mm	292	330	356	432	508	559	660	787	838	889	991	1092	1194	1397
L2	inch	11.62	13.12	14.12	17.12	20.12	22.12	26.12	31.12	33.12	35.12	39.12	43.12	47.25	55.38
	mm	295	333	359	435	511	562	664	791	841	892	994	1095	1200	1407
H	inch	7.5	8.3	9.6	11.8	13.3	15.7	16.9	20.7	24.2	27.6	32.0	37.8	40.5	457.3
	mm	190	210	235	300	337	400	430	525	615	700	812	960	1029	1202
WEIGHT	LB	77.2	119.1	141.1	229.3	330.8	449.8	793.8	1367.1	1775.0	2306.4	2976.8	4454.1	5269.9	7717.5
	Kg	35	54	64	104	150	204	360	620	805	1045	1350	2020	2390	3500



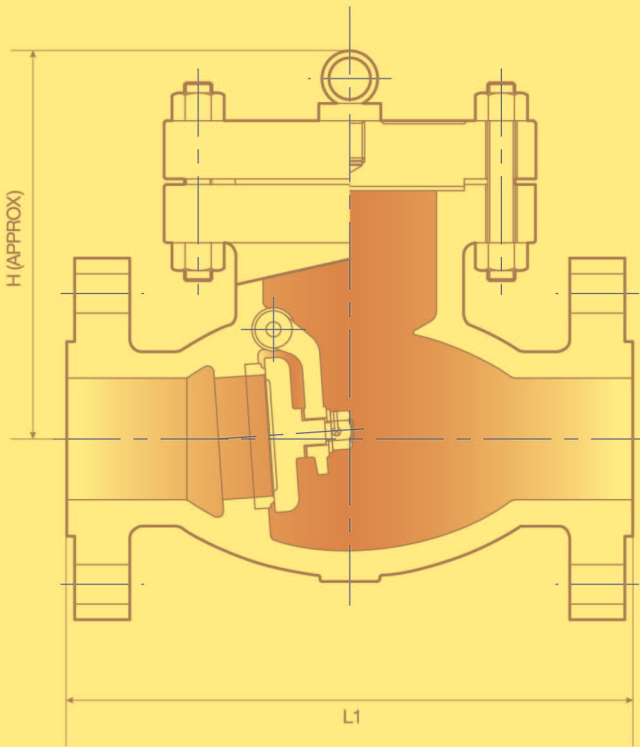
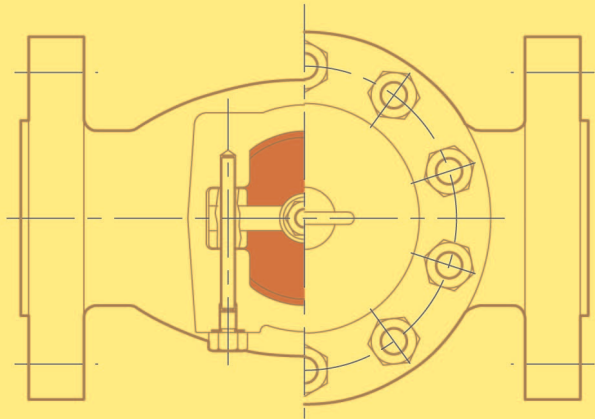
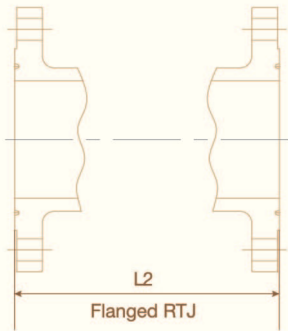
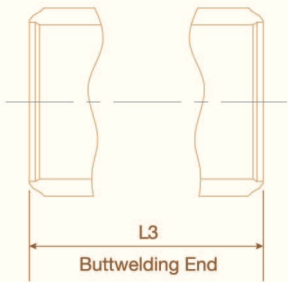
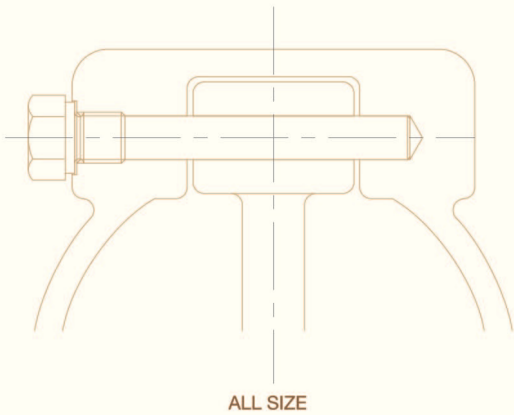
ALL SIZE



ASME CLASS 900LB

SWING CHECK VALVES  
BOLTED COVER  
CAST STEEL

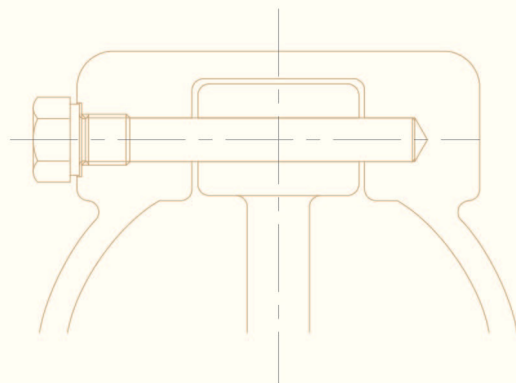
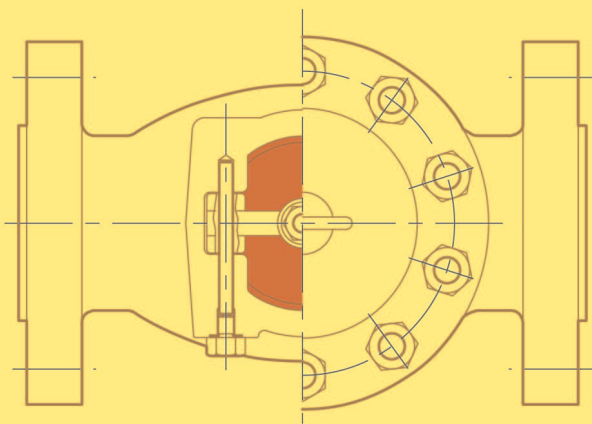
VALVE SIZE	inch	2	2 1/2	3	4	5	6	8	10	12	14	16
	mm	50	65	80	100	125	150	200	250	300	350	400
L1 & L3	inch	14.5	16.5	15.0	18.0	22.0	24.0	29.0	33.0	38.0	40.5	44.5
	mm	368	419	381	457	559	610	737	838	965	1029	1130
L2	inch	14.62	16.62	15.12	18.12	22.13	24.12	29.12	33.12	38.12	40.88	44.88
	mm	371	422	384	460	562	613	740	841	968	1038	1140
H	inch	13.1	13.7	12.6	16.7	17.4	18.9	22.2	28.3	30.7	31.8	33.0
	mm	333	349	321	423	441	479	565	721	781	807	838
WEIGHT	LB	154.4	242.6	242.6	471.4	735.6	837.9	1375.9	2535.9	3197.3	3858.8	5336.1
	Kg	70	110	110	214	320	380	624	1150	1450	1750	2420



# ASME CLASS 1500<sub>LB</sub>

SWING CHECK VALVES  
BOLTED COVER  
CAST STEEL

VALVE SIZE	inch	2	2 1/2	3	4	5	6	8	10	12	14
	mm	50	65	80	100	125	150	200	250	300	350
L1 & L3	inch	14.5	16.5	18.5	21.5	26.5	27.75	32.75	39.0	44.5	49.5
	mm	368	419	470	546	673	705	832	991	1130	1257
L2	inch	14.62	16.62	18.62	21.62	26.61	28.0	33.13	39.38	45.12	50.25
	mm	371	422	473	549	676	711	842	1000	1146	1276
H	inch	13.1	13.7	15.3	16.5	18.9	23.1	26.8	29.8	39.7	40.8
	mm	333	349	389	419	479	587	680	756	1008	1035
WEIGHT	LB	154.4	242.6	374.9	661.5	1036.4	1532.5	2624.0	4079.3	7342.7	7938
	Kg	70	110	170	300	470	695	1190	1850	3330	3600



ALL SIZE

