

### SPECIFICATION

| ITEM                       | UNIT   | QUANTITY    | REMARK |
|----------------------------|--------|-------------|--------|
| COOLING CAPACITY           | Kcal/h | 58,500      |        |
| COOLING WATER INLET TEMP.  | °C     | 37          |        |
| COOLING WATER OUTLET TEMP. | °C     | 32          |        |
| OUTDOOR AIR TEMP.          | °C WB  | 27          |        |
| COOLING WATER FLOW RATE    | LPM    | 195         |        |
| AIR VOLUME                 | CMM    | 150         |        |
| MOTOR POWER                | HP     | 2 HP x 1SET |        |

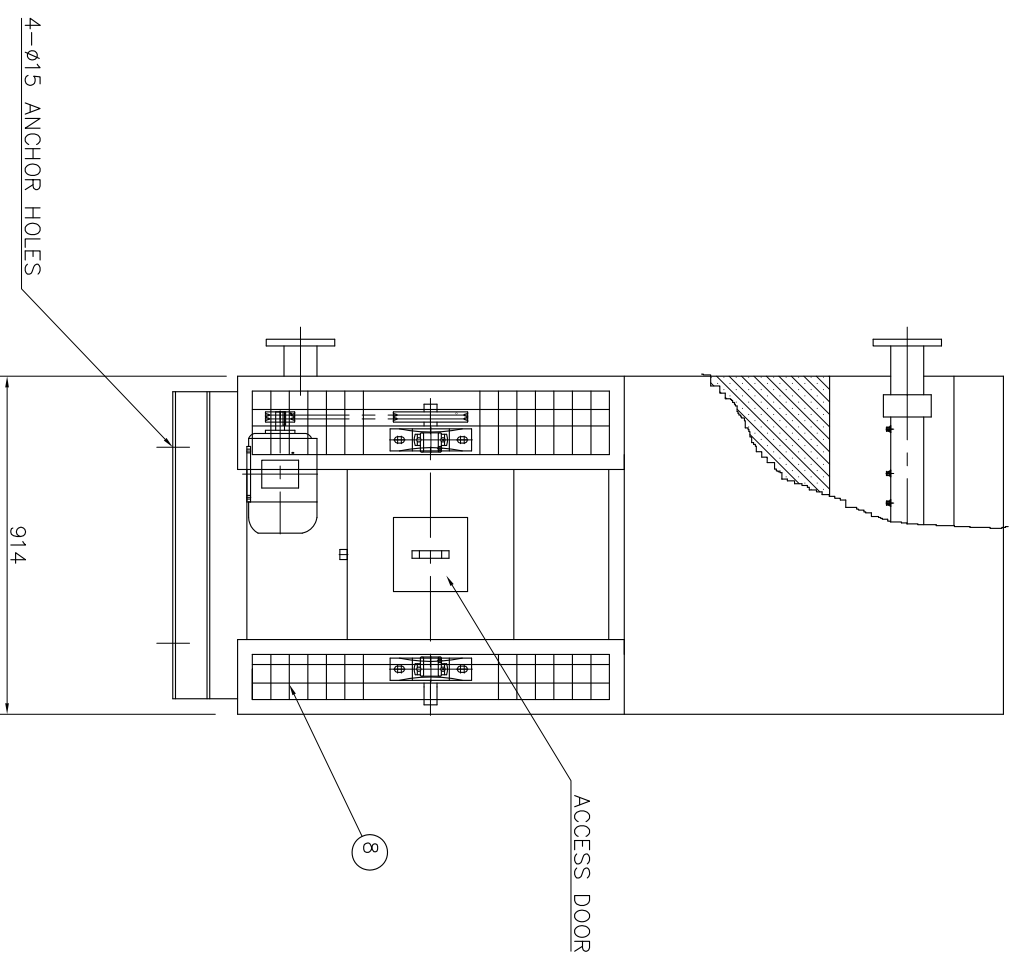
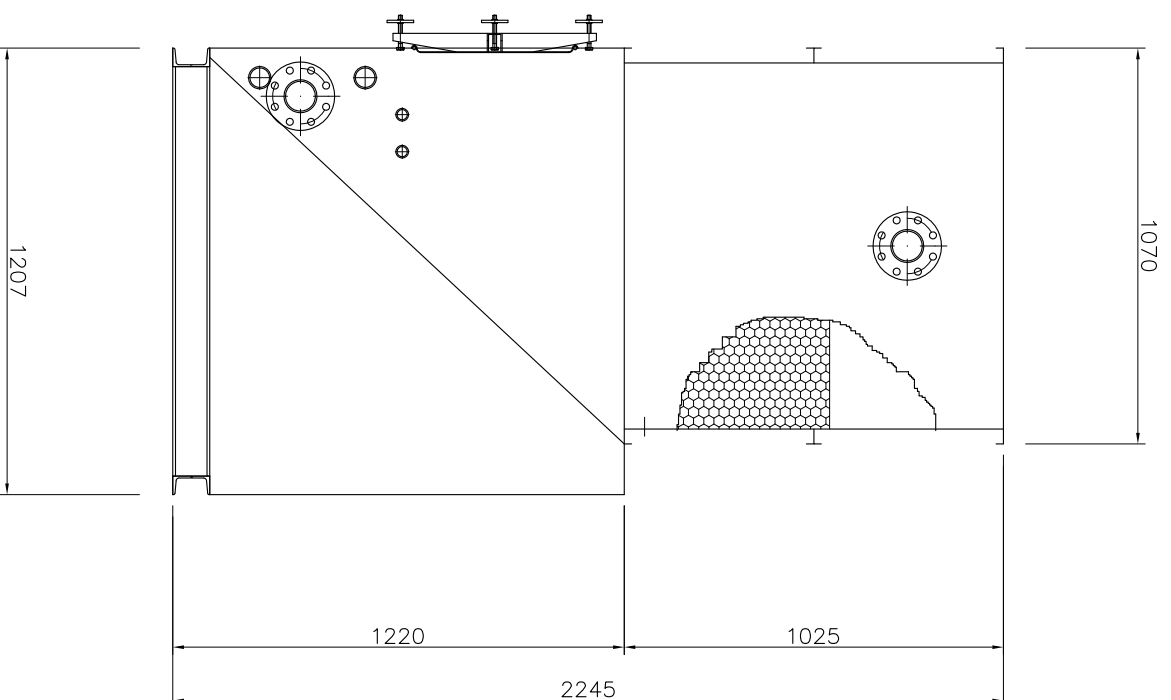
### NOTE

1. THE COOLING CAPACITY OF THIS TOWER CAN BE ADJUSTABLE IN ACCORDANCE WITH OPERATING CONDITION
3. TOWER COLOR : MUNSELL NO. N-7 (LIGHT GRAY)

### LOAD DATA TABLE

|                  |     |    |
|------------------|-----|----|
| NET WEIGHT       | 350 | kg |
| OPERATING WEIGHT | 415 | kg |

| NO. | DESCRIPTION | MATERIAL  | DIMENSION                        | QUANTITY | REMARK |
|-----|-------------|-----------|----------------------------------|----------|--------|
| 1   | FAN MOTOR   | -         | TEFC 2HP                         | 1        |        |
| 2   | FAN         | -         | SF 2.5 DS                        | 1        |        |
| 3   | CASING      | SGCC/SGHC | FILLER PART 2.0t , PAN PART 3.0t | 1 SET    |        |
| 4   | ELIMINATOR  | PVC       | 0.6t                             | 1 SET    |        |
| 5   | FILLER      | PVC       | 0.3t (PITCH 15mm)                | 1 SET    |        |



| NO. | DATE | DESCRIPTION | DRN | DGN | CHK | APP |
|-----|------|-------------|-----|-----|-----|-----|
| △   |      |             |     |     |     |     |
| △   |      |             |     |     |     |     |
| △   |      |             |     |     |     |     |

**DHR**  
**동해공업(주)**  
**DONGHAE INDUSTRIAL CO.,LTD.**

TITLE  
 CLOSED CIRCUIT EVAPORATIVE

COOLING TOWER

MODEL NO.  
 DHOE-15

PJT. NO.  
 -

DWG NO.  
 -

SCALE  
 1 / 20

UNIT  
 METRIC

PRO-  
 JECTION

REV.

