



ISO 9001
Certificate No. A 0858
ISO 14001
Certificate No. B 0110
OHSAS 18001
Certificate No. C 0082



www.dh.co.kr

▶▶ Engineering technology for the future



FUEL SWITCH

Automatic control system for Bunker Change

DongHwa Entec

FUEL SWITCH

Automatic control system for Bunker Change

● Features

Donghwa total solution [MGO C/U + FUEL SWITCH]

Including one control panel can fully control both bunker change and MGO cooling process with very high operational reliability.

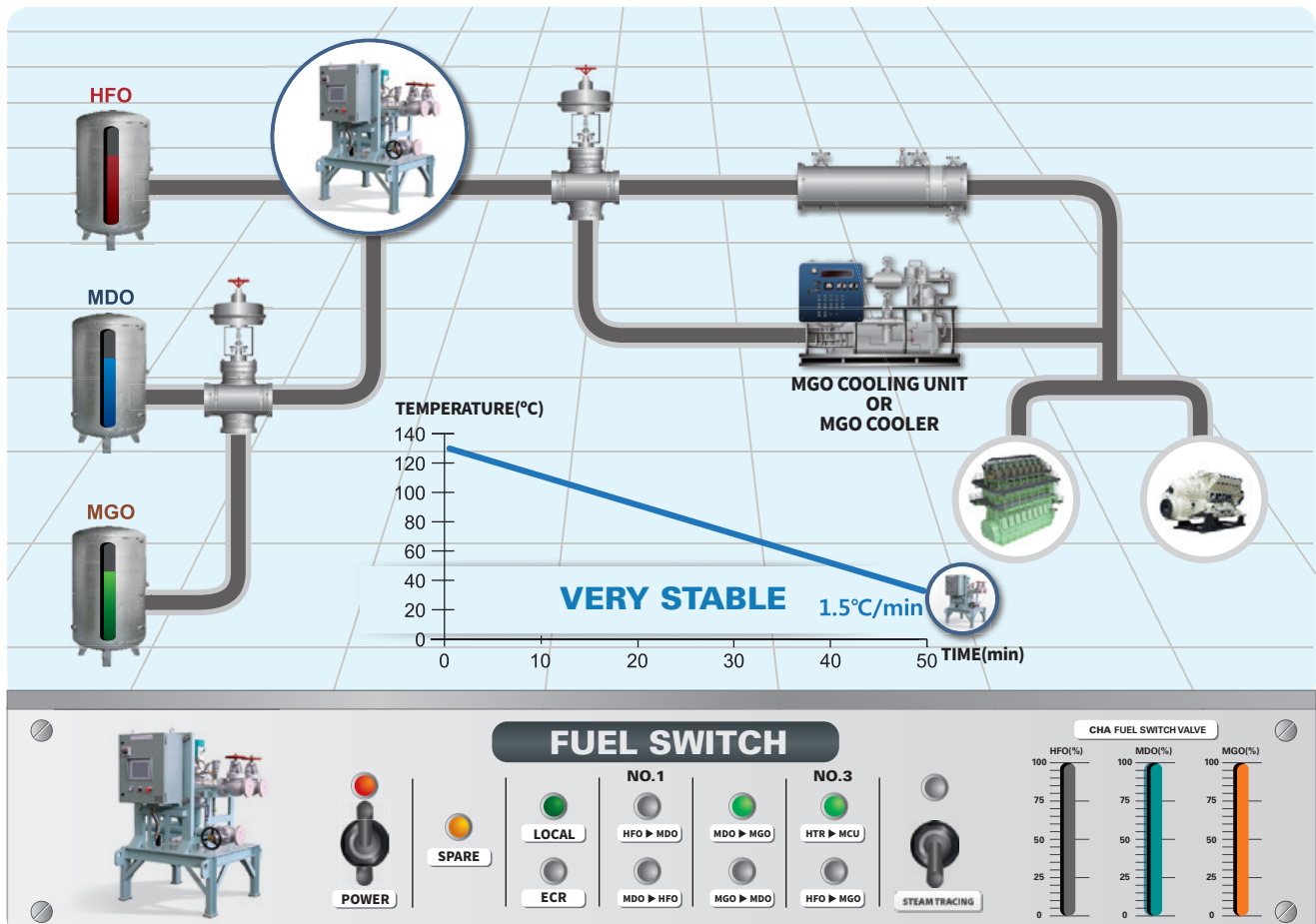
Donghwa [FUEL SWITCH] with control panel

will be provided just to control bunker change process where only cooler, not MGO cooling unit, is applied on vessel.

Fuel Switch for automatic changeover between HFO and MGO/MDO.

Change-over to/from MGO can be somewhat dangerous for the fuel equipment as hot heavy fuel is mixed into relatively cold gas/diesel oil. So, it safely can control this process in connection with MGO C/U provided by Donghwa. Furthermore, HMI as option can help you to control it and monitor all information under operations with much easy and safety.

● Automatic by Fuel Switch



● The advantage of Fuel Switch

Lower Cost & Central Control

You respectively can control MGO cooling unit & Fuel Switch and monitor actual operating condition in real-time through MHI at ECR with One control panel of Donghwa total solution for applying low-sulphur MDO/MGO on sailing in CARB and EU-ECA, compared to providing each equipment of other systems.

Compact Design

3-Way valve with simplicity can be designed with easy installation and maintenance, which is able to applied to sea-going vessel as well.

Precise control

During change-over, the temperature increase/decrease rate should be less than 2°C/min. to protect the fuel equipment from the thermal shock resulting in sticking.

Easy operation & Data Log

You can use and adjust this system due to a simple control logic automatically, switching to manual during error condition as well.

All data during operation condition are able to be monitored and recorded as an automatic real-time data logging system which are interlocked to GPS(Global Positioning System).

Standard Model



Model

DHFS40

DHFS50

DHFS65

DHFS80

DHFS100

DHFS125

DHFS150

Composition

1. No.1 Change V/V
2. No.2 Change V/V
3. No.3 Change V/V
4. Mixer
5. HMI(Touch Screen)
6. Temp. Sensor
7. Panel & Etc.



Head Office and Factory (Land Area: 15,574 m² / Building Area: 13,845 m²)



Hwajeon Office and Factory (Land Area: 20,127 m² / Building Area: 20,087 m²)



Energy - Environmental Tec. Lab. (Land Area: 4,465 m² / Building Area: 3,365 m²)



DongHwa Entec (Shanghai) Co., Ltd. (Land Area: 33,350 m² / Building Area: 18,457 m²)

DongHwa Entec

Head Office and Factory

7, Noksansandan 261-ro, Gangseo-gu, Busan, Korea
TEL : +82-51-970-1000 FAX : +82-51-970-1001

Hwajeon Office and Factory

20, Hwajeonsandan 1-ro 63beon-gil, Gangseo-gu, Busan, Korea
TEL : +82-51-970-1100 FAX : +82-51-970-0710

Energy - Environmental Technology Laboratory

7, Gwahaksandan-ro 305beon-gil, Gangseo-gu, Busan, Korea
TEL : +82-51-970-0711 FAX : +82-51-970-0730

Subsidiary Company

DongHwa Pneutec

75, Mieumsandan-ro 8beon-gil, Gangseo-gu, Busan, Korea
TEL : +82-51-974-4800 FAX : +82-51-974-4899

DongHwa Giyeon

80, Mieumsandan-ro 8beon-gil, Gangseo-gu, Busan, Korea
TEL : +82-51-899-9600 FAX : +82-51-899-9670

DongHwa Entec (Shanghai) Co., Ltd.

No.2508 JiangShan Road Luchaogang Shanghai 201308 P.R.China
TEL : +86 (0)21-5197-5001 FAX : +86 (0)21-5197-5005

GAS Entec Co., Ltd.

No. #812, 813 and 814, Ace Hitech21, 48, Centum jungang-ro,
Haeundae-gu, Busan, Korea
TEL : +82-51-714-3308 FAX : +82-70-7500-3979