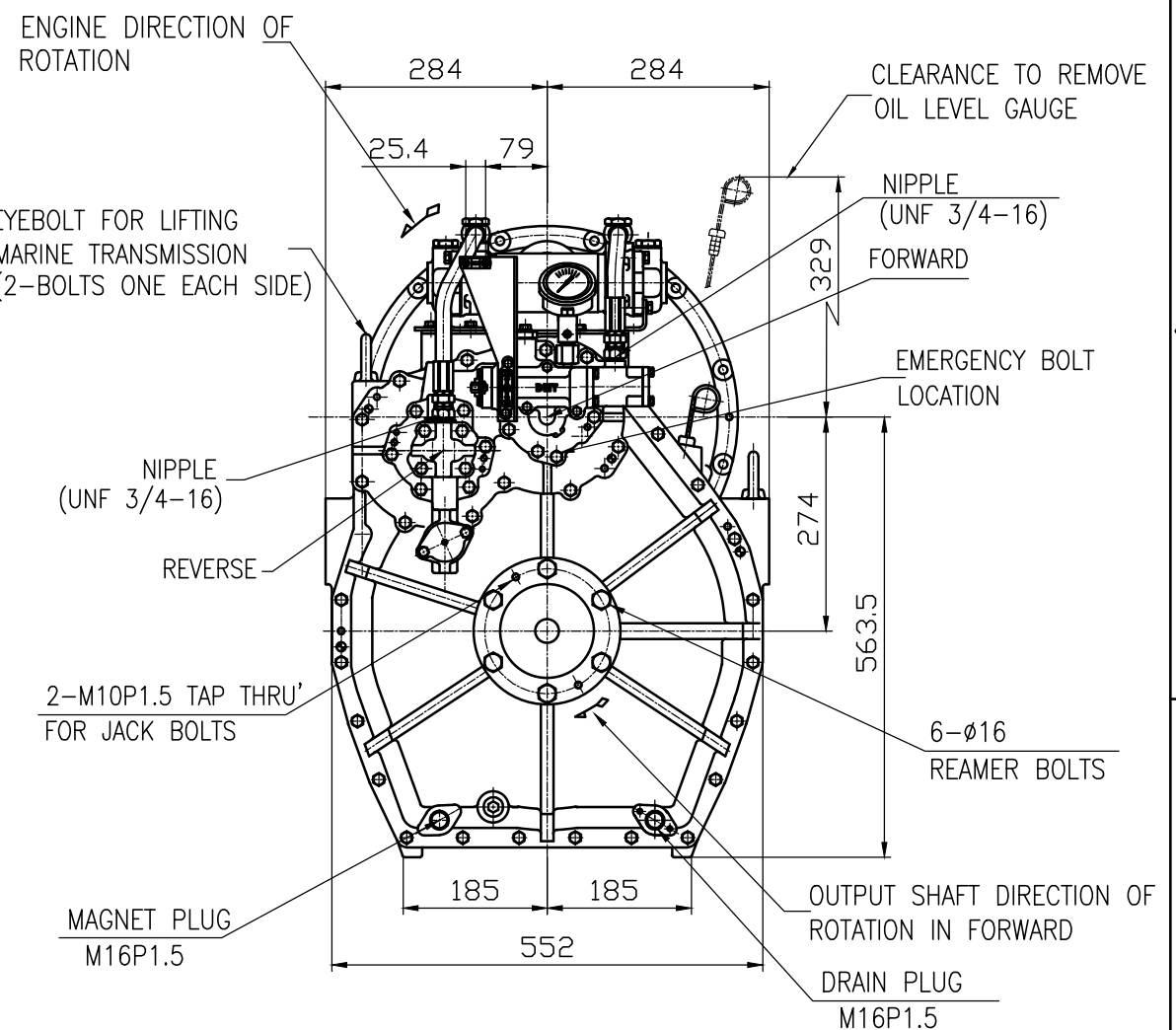
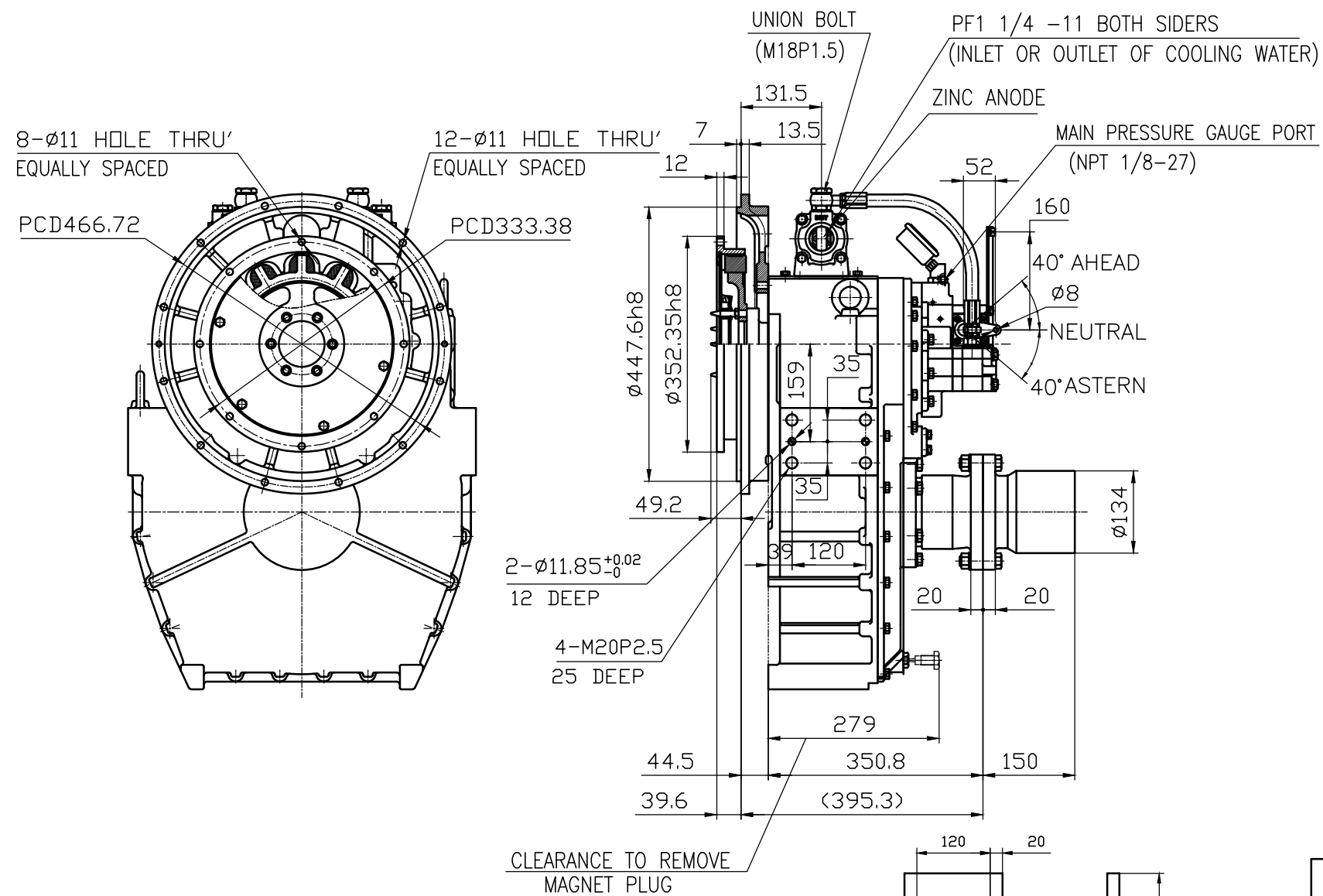
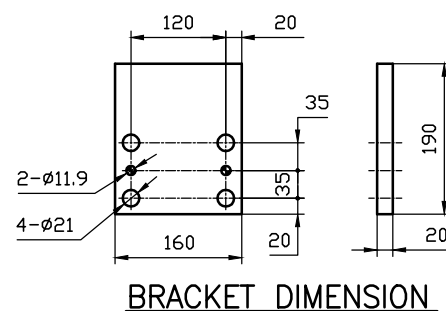


DMT 100HL MARINE TRANSMISSION SPECIFICATION		
GEAR RATIO	5.29, 5.95, 4.07, 4.50, 4.95	
TOTAL WEIGHT	APPROX. 263 kg(DRY)	
OIL CAPACITY	APPROX. 9.5L	
OIL VISCOSITY	SAE # 30	
OIL PRESSURE	1.96 ~ 2.35 MPa	CLUTCH OIL
DIRECTION OF ROTATION	INPUT	C.C.W VIEWED FROM THE STERN
	OUTPUT	C.W VIEWED FROM THE STERN
OIL CHANGE INTERVAL	THE FIRST 100HOURS OF INITIAL OPERATION AND EVERY 1000HOURS THEREAFTER	
SHIFTING LIMIT	UNDER 50% OF THE RATED ENGINE SPEED	
OIL COOLER	WATER FLOW 40 ~ 60L/min	TEMPERATURE OF COOLING WATER MAX 32°C
OPERATING TORQUE OF SHIFTING LEVER	UNDER 2.94Nm	



REMARK
1.HOUSING: SAE#2
2.DRIVING RING: SAE 11.5"
3.COULING TYPE : DUAL STAGE



공통공차 TOLERANCE ON				번호 NO.	품 PART NO.	명 PART NAME	개수 QTY	재 MATERIAL	규 SIZE	비 REMARKS
분수 FRACTIONS	소수 DECIMALS	각도 ANGLES	±	제 MATERIAL	형 식 TYPE	명 식 NAME	도 번호 DWG. NO.	기 기 SIZE	코-드 번호 CODE ID. NO.	고 REMARKS
± 0.05	± 0.02	± 0.1	± 0.1	2012.06.18	SCALE N/S	DMT100HL	000	A 3		원도번호 ORIGINAL DWG. NO.
± 0.05	± 0.02	± 0.1	± 0.1	2012.06.18	SCALE N/S	MARINE TRANSMISSION	000			개정(REV.)
± 0.05	± 0.02	± 0.1	± 0.1	JK.Kim	KS.Han	KC.Yoon	10000GHA~E-2115DC			000
± 0.05	± 0.02	± 0.1	± 0.1	D-I INDUSTRIAL						