

High Pressure Water Triplex Pump

COMBO PUMP 602 SERIES

POWER RATING UP TO 350HP (262kW)



Standard features

High efficiency In-line fluid end design for maximum motor power utilization

Stainless steel fluid end construction

Valve assembly design for easy field maintenance

Field proven design based on rugged condition

Power rating up to 350HP (262kW)

Pressure range up to 2800 bar

Flow rates from 28 ltr/min to 323 ltr/min

Durable Power End

Superior quality ductile iron power frame

Heavy duty roller bearings

Heat-treated special alloy crankshaft

Heavy duty alloy connection rods

Large capacity oil cooler for steady performance

Force-feed and splash lubrication

High Pressure Fluid End

Stainless steel head

High efficiency Stainless steel in-line valves

Solid Tungsten plungers

Plunger & Packing cooling system

Long-lasting self-adjust packing set

BC TAECHANG INDUSTRIAL CORPORATION

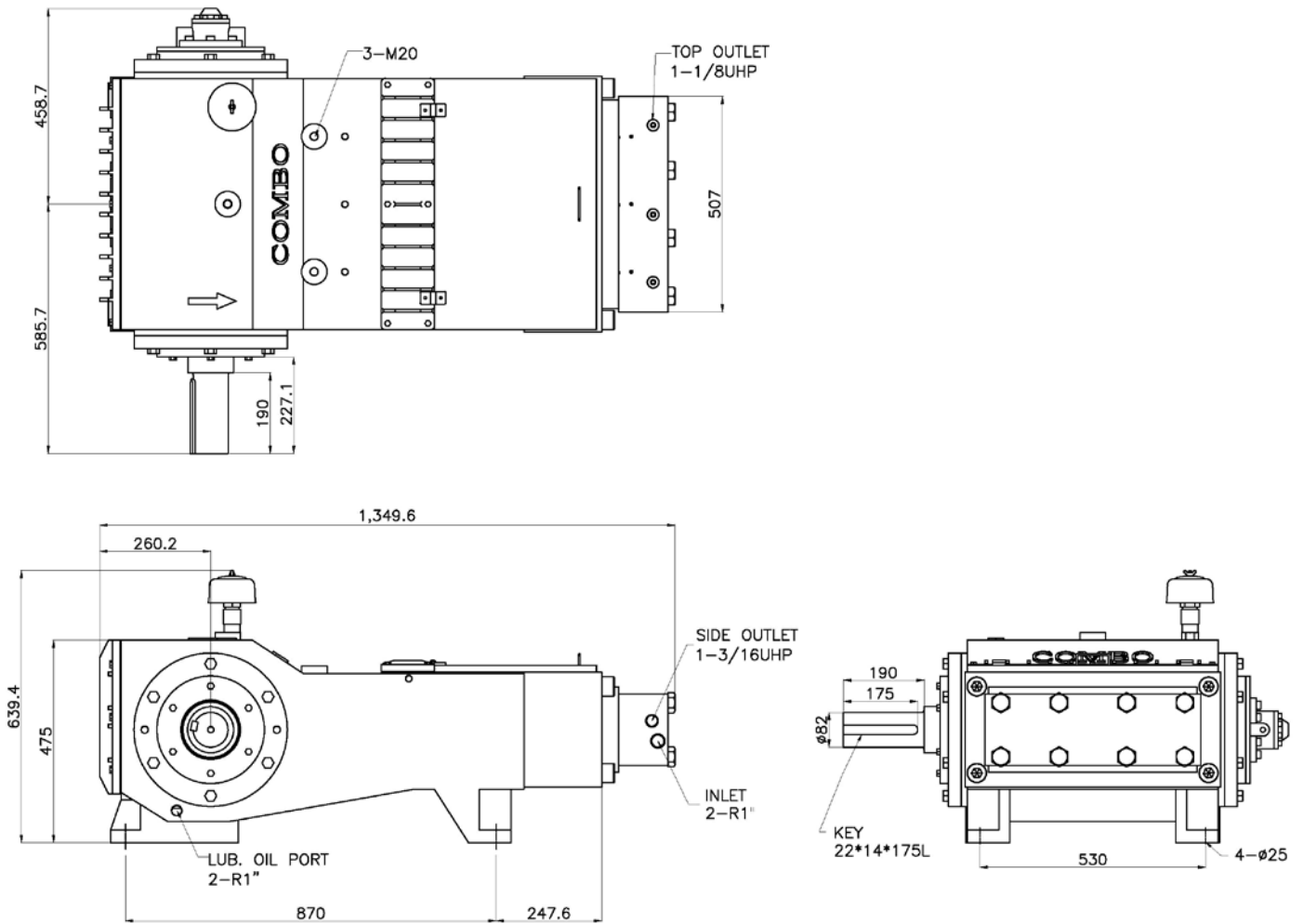
4, Daeyoung-ro 242 Angil, Chung-ku, Busan, 600-811 Korea

<http://www.bcinternational.co.kr>

Tel: +82-51-442-6191~2 / Fax: +82-51-442-6193

The Ultimate Solution for Blasting and Rust Stripping

Dimension



Stroke: 95mm / Crank oil capacity: 36 ltr / Net weight: about 950kg

Inlet water temperature: 40°C max.

Inlet pressure: MP fluid end - 1 bar min. / HP & UHP fluid end - 3 bar min.

BC TAECHANG INDUSTRIAL CORPORATION

#640-1, Youngju-Dong, Jung-Gu, Busan, Korea

<http://www.bcinternational.co.kr>

Tel: +82-51-442-6191~2 / Fax: +82-51-442-6193

The Ultimate Solution for Blasting and Rust Stripping

Specification

Flow rate	Power rating (HP)			Plunger dia.	Speed
	[l/min]	200	250		
28	2800			18	400
32	2550				450
36	2270	2800			500
40	2040	2550	2800		560
32	2550			19.05	400
36	2270	2750			450
40	2040	2550			500
45	1810	2270	2720		560
35	2330			20	400
40	2040	2500			450
44	1850	2320			500
50	1630	2040	2450		560
44	1850			22.22	400
49	1660	2080			450
55	1480	1850			500
61	1340	1670	2010		560
57	1430			25.4	400
64	1270	1550			450
72	1130	1420			500
80	1020	1270	1530		560
73	1120			28.58	400
82	990	1220			450
91	890	1120			500
102	800	1000	1200		560

Flow rate	Power rating (HP)			Plunger dia.	Speed
	[l/min]	200	250		
90	900			31.75	400
101	810	990			450
112	730	910			500
126	640	810	970		560
109	750			34.93	400
122	670	830			450
136	600	750			500
152	530	670	800		560
129	630			38.1	400
146	560	680			450
162	500	630			500
181	450	560	670		560
164	490			42.86	400
184	440	540			450
205	390	490			500
230	350	440	530		560
203	400			47.63	400
228	350	440			450
253	320	400			500
284	280	360	430		560
230	350			50.8	400
259	310	380			450
288	280	350			500
323	250	310	370		560

** All flows are based on 100% volumetric efficiency

BC TAECHANG INDUSTRIAL CORPORATION

#640-1, Youngju-Dong, Jung-Gu, Busan, Korea

<http://www.bcinternational.co.kr>

Tel: +82-51-442-6191~2 / Fax: +82-51-442-6193

The Ultimate Solution for Blasting and Rust Stripping