

High Pressure Water Triplex Pump

**COMBO PUMP 502 SERIES**

POWER RATING UP TO 200HP (150kW)



Standard features

- High efficiency In-line fluid end design for maximum motor power utilization
- Stainless steel fluid end construction
- Valve assembly design for easy field maintenance
- Field proven design based on rugged condition
- Power rating up to 200HP (150kW)
- Pressure range up to 2800 bar
- Flow rates from 21 ltr/min to 302 ltr/min

**Durable Power End**

- Superior quality ductile iron power frame
- Heavy duty roller bearings
- Heat-treated special alloy crankshaft
- Heavy duty alloy connection rods
- Large capacity oil cooler for steady performance
- Force-feed and splash lubrication

**High Pressure Fluid End**

- Stainless steel head
- High efficiency Stainless steel in-line valves
- Solid Tungsten plungers
- Plunger & Packing cooling system
- Long-lasting self-adjust packing set

**BC TAECHANG INDUSTRIAL CORPORATION**

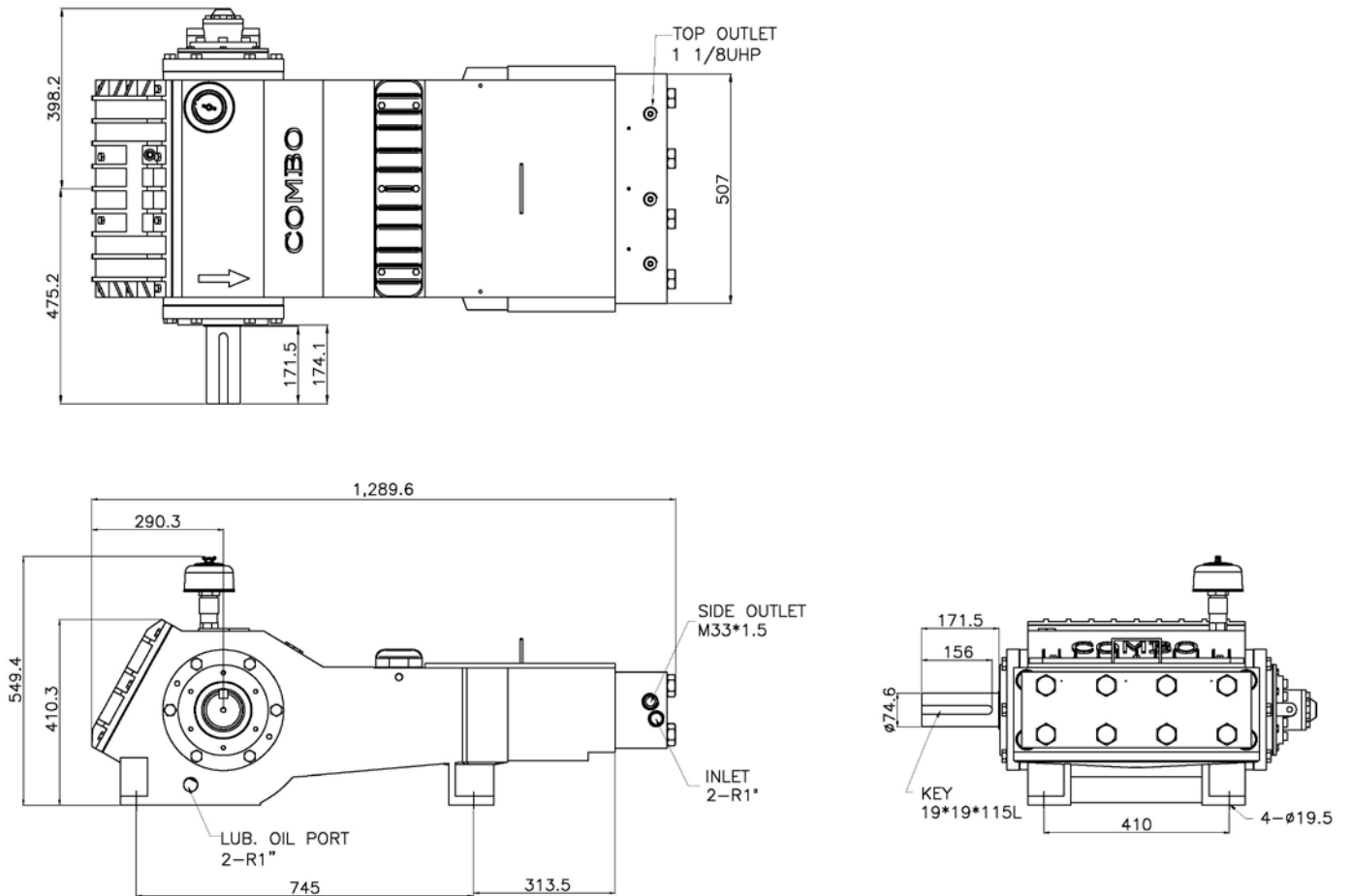
4, Daeyoung-ro 242 Angil, Chung-ku, Busan, 600-811 Korea

<http://www.bcinternational.co.kr>

Tel: +82-51-442-6191~2 / Fax: +82-51-442-6193

***The Ultimate Solution for Blasting and Rust Stripping***

## Dimension



Stroke: 88.9mm / Crank oil capacity: 30ltr / Net weight: about 610kg

Inlet water temperature: 40°C max.

Inlet pressure: MP fluid end - 1 bar min. / HP & UHP fluid end - 3 bar min.

## BC TAECHANG INDUSTRIAL CORPORATION

#640-1, Youngju-Dong, Jung-Gu, Busan, Korea

<http://www.bcinternational.co.kr>

Tel: +82-51-442-6191~2 / Fax: +82-51-442-6193

*The Ultimate Solution for Blasting and Rust Stripping*

## Specification

Flow rate	Power rating (HP)				Plunger dia.	Speed
	[l/min]	75	100	150		
21	1460	1940	2800		16	400
24	1270	1700	2550			450
26	1180	1570	2360			500
30	1020	1360	2040	2720		560
27	1130	1510	2200		18	400
30	1020	1360	2040			450
33	920	1230	1850			500
37	820	1100	1650	2200		560
30	1020	1360	1970		19.05	400
34	900	1200	1800			450
37	820	1100	1650			500
42	730	970	1460	1940		560
33	920	1230	1790		20	400
37	820	1100	1650			450
41	740	990	1490			500
46	660	880	1330	1770		560
41	740	990	1450		22.22	400
46	660	880	1330			450
51	600	800	1200			500
57	530	710	1070	1430		560
54	560	750	1110		25.4	400
60	510	680	1020			450
67	450	610	910			500
75	400	540	810	1090		560
68	450	600	870		28.58	400
76	400	530	800			450
85	360	480	720			500
95	320	430	640	860		560

Flow rate	Power rating (HP)				Plunger dia.	Speed
	[l/min]	75	100	150		
84	360	480	710		31.75	400
94	320	430	650			450
105	290	380	580			500
118	260	340	520	690		560
102	300	400	580		34.93	400
114	260	350	530			450
127	240	320	480			500
143	210	280	420	570		560
121	250	330	490		38.1	400
136	220	300	450			450
151	200	270	400			500
170	180	240	360	480		560
153	200	260	390		42.86	400
173	170	230	350			450
192	150	210	310			500
215	140	190	280	380		560
189	160	210	310		47.63	400
213	140	190	280			450
237	120	170	250			500
265	110	150	230	300		560
216	140	180	270		50.8	400
243	120	160	250			450
270	110	150	220			500
302	100	130	200	270		560

\*\* All flows are based on 100% volumetric efficiency

### BC TAECHANG INDUSTRIAL CORPORATION

#640-1, Youngju-Dong, Jung-Gu, Busan, Korea

<http://www.bcinternational.co.kr>

Tel: +82-51-442-6191~2 / Fax: +82-51-442-6193

*The Ultimate Solution for Blasting and Rust Stripping*