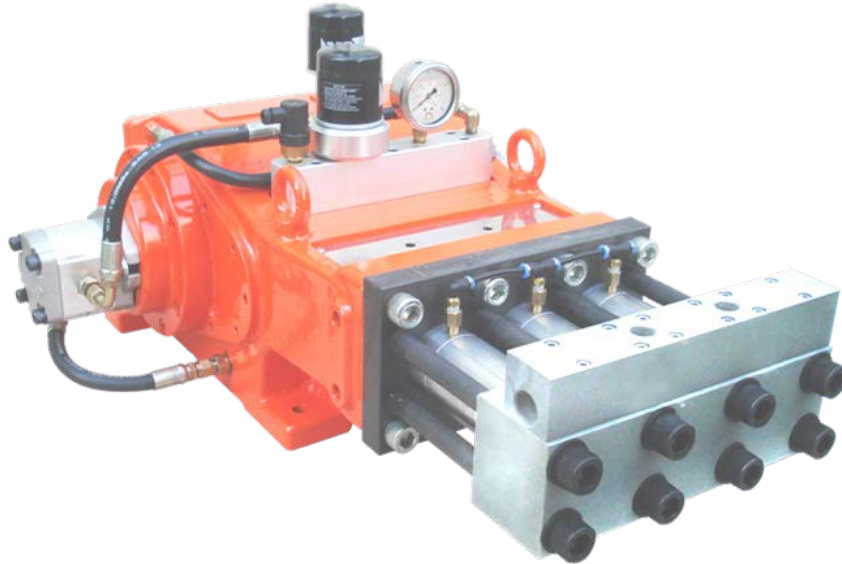


High Pressure Water Triplex Pump

**COMBO PUMP 3016 SERIES**

POWER RATING UP TO 100HP (75kW)



**Standard features**

High efficiency In-line fluid end design for maximum motor power utilization

Stainless steel fluid end construction

Valve assembly design for easy field maintenance

Field proven design based on rugged condition

Power rating up to 100HP (75kW)

Pressure range up to 2800 bar

Flow rates from 10 ltr/min to 91 ltr/min

**Durable Power End**

Superior quality ductile iron power frame

Heavy duty taper roller bearings

Heat-treated special alloy crankshaft

Heavy duty alloy connection rods

Large capacity oil cooler for steady performance

Force-feed and splash lubrication

**High Pressure Fluid End**

Stainless steel head

High efficiency Stainless steel in-line valves

Solid Tungsten plungers

Plunger & Packing cooling system

Long-lasting self-adjust packing set

**BC TAECHANG INDUSTRIAL CORPORATION**

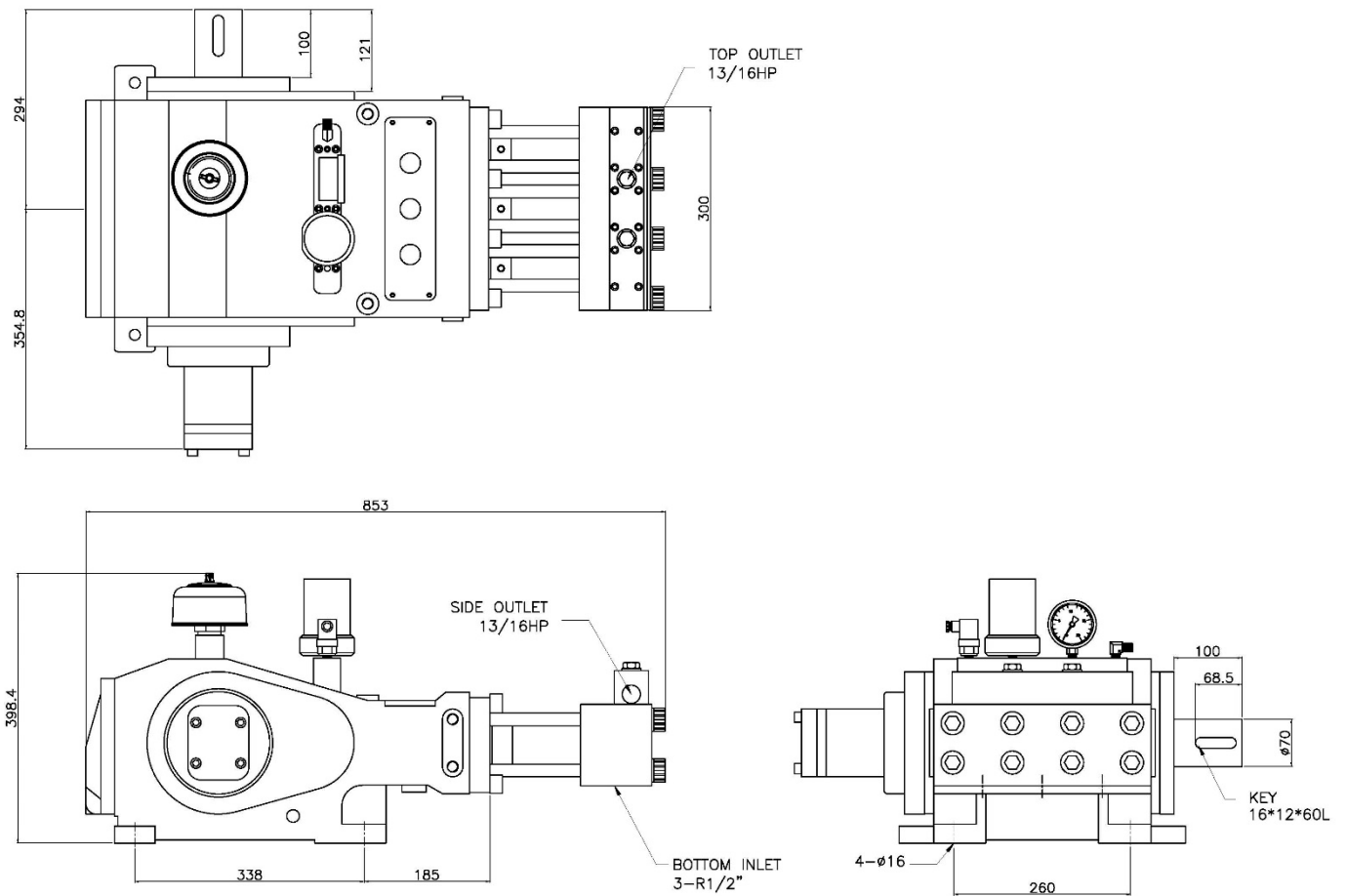
76-46, KIMHAE-DAERO 2579, KIMHAE, KYUNGNAM, 50932 KOREA

<http://www.bcinternational.co.kr>

Tel: +82-51-442-6191~2 / Fax: +82-51-442-6193

***The Ultimate Solution for Blasting and Rust Stripping***

## Dimension



Stroke: 60mm / Crank oil capacity: ltr / Net weight: about 210 kg

Inlet water temperature: 40°C max.

Inlet pressure: MP fluid end - 1 bar min. / HP & UHP fluid end - 3 bar min.

## BC TAECHANG INDUSTRIAL CORPORATION

76-46, KIMHAE-DAERO 2579, KIMHAE, KYUNGNAM, 50932 KOREA

<http://www.bcinternational.co.kr>

Tel: +82-51-442-6191~2 / Fax: +82-51-442-6193

*The Ultimate Solution for Blasting and Rust Stripping*

## Specification

Flow rate	Power rating (HP)			Plunger dia.	Speed
	[l/min]	50	75		
10	2040	2800		12	500
11	1850	2780			560
12	1700	2550			600
13	1570	2360	2800		650
20	1020	1530	2040		1000
14	1460	2000		14.26	500
16	1270	1910	2550		560
17	1200	1800	2400		600
18	1130	1700	2270		650
28	730	1090	1460		1000
18	1130	1580	2270		16
20	1020	1530	2040	560	
21	970	1460	1940	600	
23	880	1330	1770	650	
36	560	850	1130	1000	
22	920	1250	1850	18	
25	810	1220	1630		560
27	750	1130	1510		600
29	700	1050	1410		650
45	450	680	900		1000

Flow rate	Power rating (HP)			Plunger dia.	Speed
	[l/min]	50	75		
28	730	1010	1460	20	500
31	650	980	1310		560
33	610	920	1230		600
36	560	850	1130		650
56	360	540	730		1000
34	600	820	1200		22.2
39	520	780	1040	560	
41	490	740	990	600	
45	450	680	900	650	
69	290	440	590	1000	
45	450	630	900	25.4	
51	400	600	800		560
54	370	560	750		600
59	340	520	690		650
91	220	330	440		1000

\*\* All flows are based on 100% volumetric efficiency

## BC TAECHANG INDUSTRIAL CORPORATION

76-46, KIMHAE-DAERO 2579, KIMHAE, KYUNGNAM, 50932 KOREA

<http://www.bcinternational.co.kr>

Tel: +82-51-442-6191~2 / Fax: +82-51-442-6193

*The Ultimate Solution for Blasting and Rust Stripping*