

High Pressure Water Triplex Pump

**COMBO PUMP 202 SERIES**

POWER RATING UP TO 30HP (22kW)



Standard features

High efficiency In-line fluid end design for maximum motor power utilization

Stainless steel fluid end construction

Easy field maintenance and field proven design

Field proven design based on rugged condition

Power rating up to 30HP (22kW)

Pressure range up to 2110 bar

Flow rates from 5.8 ltr/min to 60 ltr/min

**Durable Power End**

Superior quality ductile iron power frame

Heavy duty taper roller bearings

Heat-treated special alloy crankshaft

Heavy duty alloy connection rods

In-line cooler plate for steady performance

Splash lubrication

**High Pressure Fluid End**

Stainless steel head

High efficiency Stainless steel in-line valves

Surface hardened STS plungers

\*\* Ceramic plungers - option

Plunger & Packing cooling system

Long-lasting self-adjust packing set

**BC TAECHANG INDUSTRIAL CORPORATION**

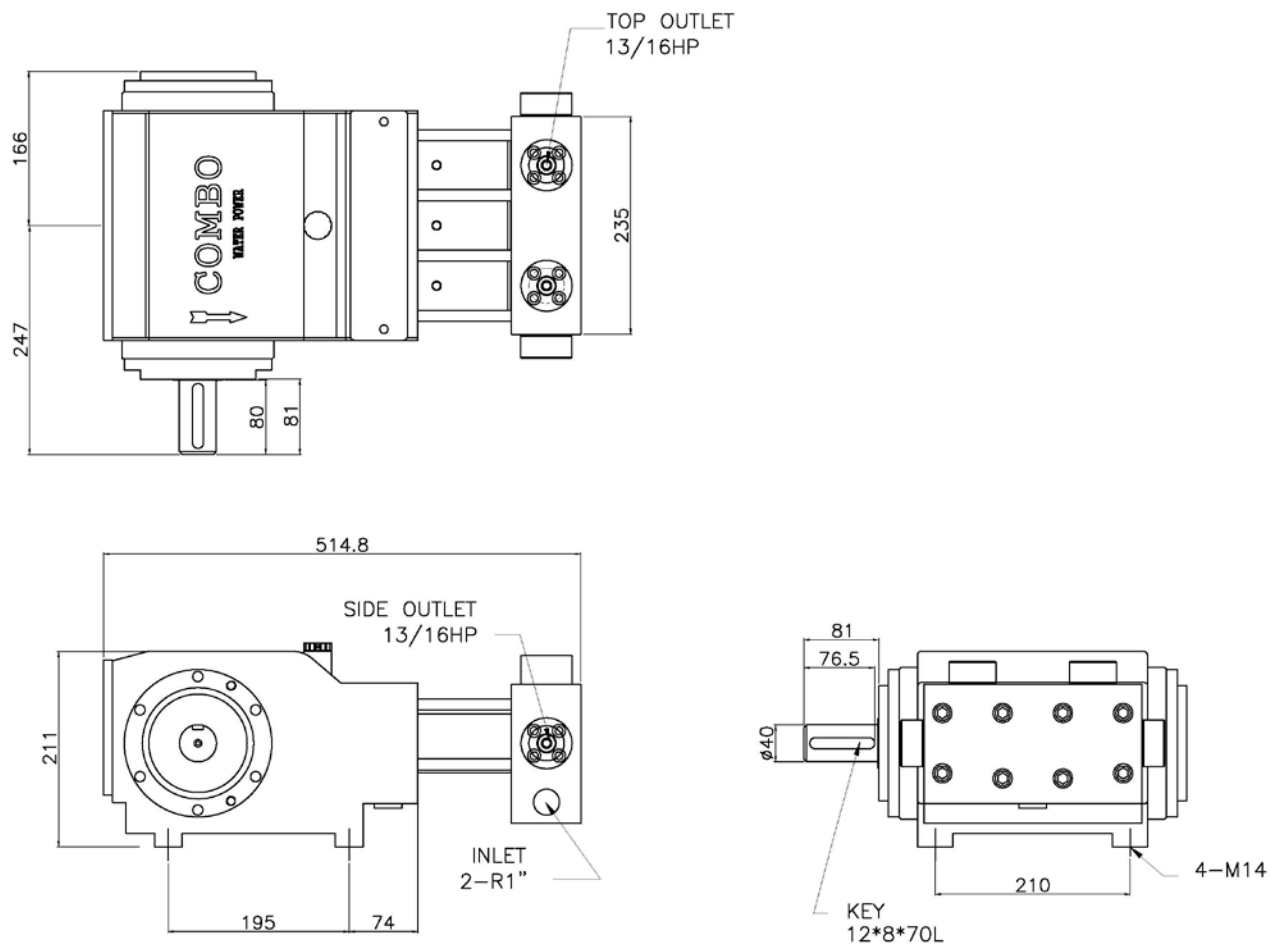
4, Daeyoung-ro 242 Angil, Chung-ku, Busan, 600-811 Korea

<http://www.bcinternational.co.kr>

Tel: +82-51-442-6191~2 / Fax: +82-51-442-6193

***The Ultimate Solution for Blasting and Rust Stripping***

## Dimension



Stroke: 40mm / Crank oil capacity: ltr / Net weight: about 105kg

Inlet water temperature: 40°C max.

Inlet pressure: MP fluid end - 1 bar min. / HP & UHP fluid end - 3 bar min.

## BC TAECHANG INDUSTRIAL CORPORATION

#640-1, Youngju-Dong, Jung-Gu, Busan, Korea

<http://www.bcinternational.co.kr>

Tel: +82-51-442-6191~2 / Fax: +82-51-442-6193

*The Ultimate Solution for Blasting and Rust Stripping*

## Specification

Flow rate	Power rating (HP)			Plunger dia.	Speed
	[l/min]	20	25		
5.8	1410	1760	2110	11.11	500
6.5	1250	1570	1880		560
7	1160	1460	1750		600
7.6	1070	1340	1610		650
9.3	870	1090	1310		800
11.6	700	880	1050		1000
7.7	1060	1320	1590		12.7
8.5	960	1200	1500	560	
9.1	890	1120	1340	600	
9.9	820	1030	1230	650	
12.2	670	830	1000	800	
15.2	530	670	800	1000	
12.3	660	830	990	15.87	
13.3	610	760	1000		560
14.2	570	720	860		600
15.4	530	660	790		650
19	430	530	640		800
23.7	340	430	510		1000
15.2	530	670	800		17.46
16.1	500	630	760	560	
17.2	470	590	710	600	
18.7	430	540	650	650	
23	350	440	530	800	
28.7	280	350	420	1000	

Flow rate	Power rating (HP)			Plunger dia.	Speed
	[l/min]	20	25		
18.8	430	540	650	20	500
21.1	380	480	580		560
22.6	360	450	540		600
24.5	330	410	500		650
30.1	270	330	400		800
37.7	210	270	320		1000
24.6	330	410	490		22.22
26	310	390	470	560	
27.9	290	360	430	600	
30.2	270	330	400	650	
37.2	210	270	320	800	
46.5	170	210	260	1000	
30.4	260	330	400	25.4	
34	240	300	360		560
36.5	220	280	330		600
39.5	200	250	310		650
48.6	160	210	250		800
60.8	130	160	200		1000

\*\* All flows are based on 100% volumetric efficiency

## BC TAECHANG INDUSTRIAL CORPORATION

#640-1, Youngju-Dong, Jung-Gu, Busan, Korea

<http://www.bcinternational.co.kr>

Tel: +82-51-442-6191~2 / Fax: +82-51-442-6193

*The Ultimate Solution for Blasting and Rust Stripping*